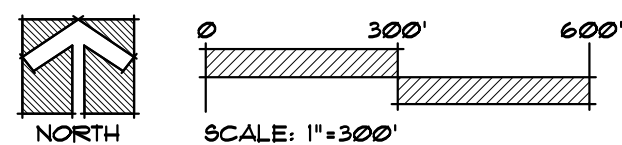
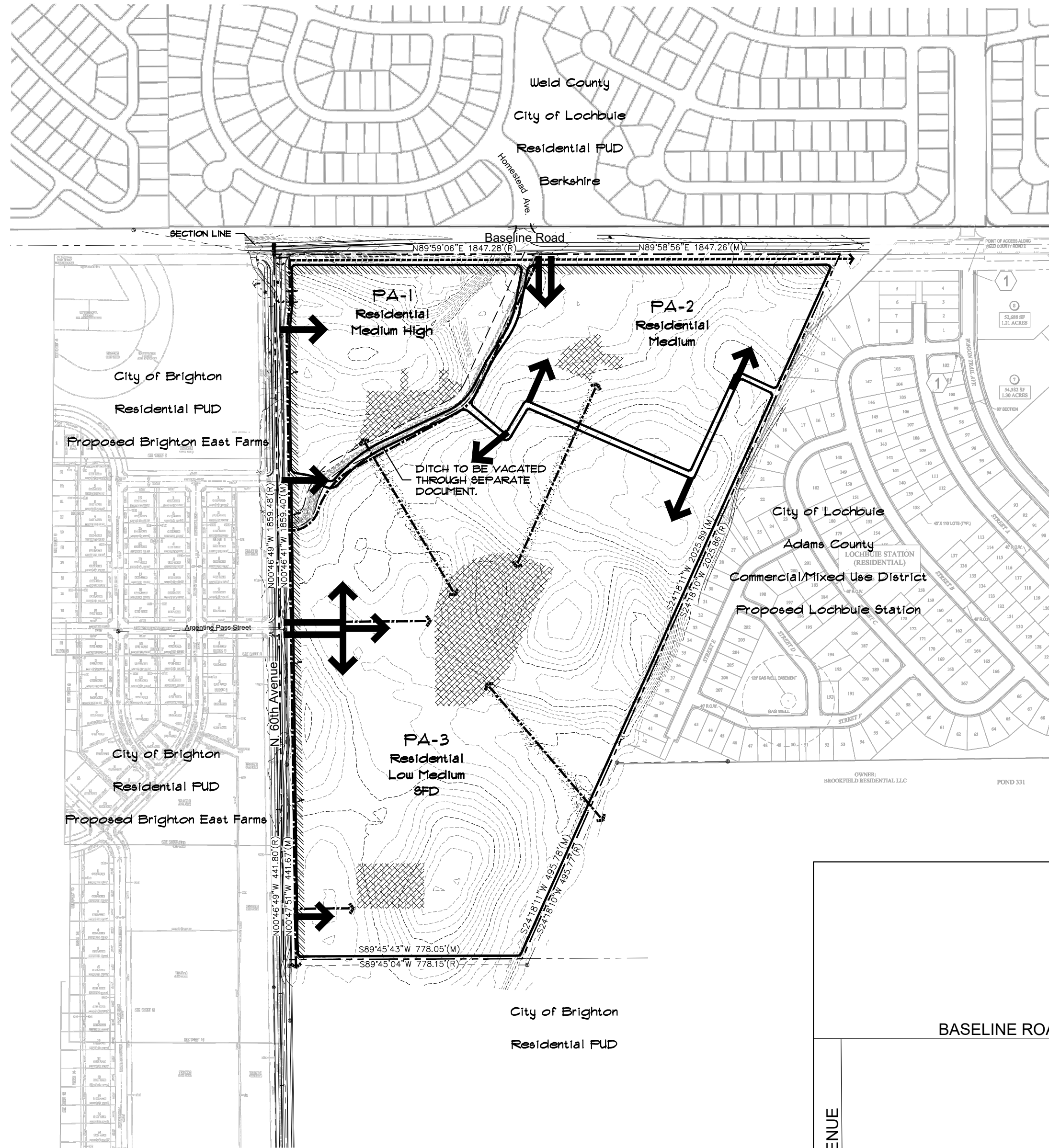


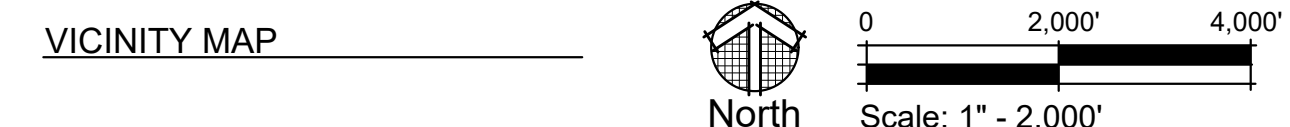
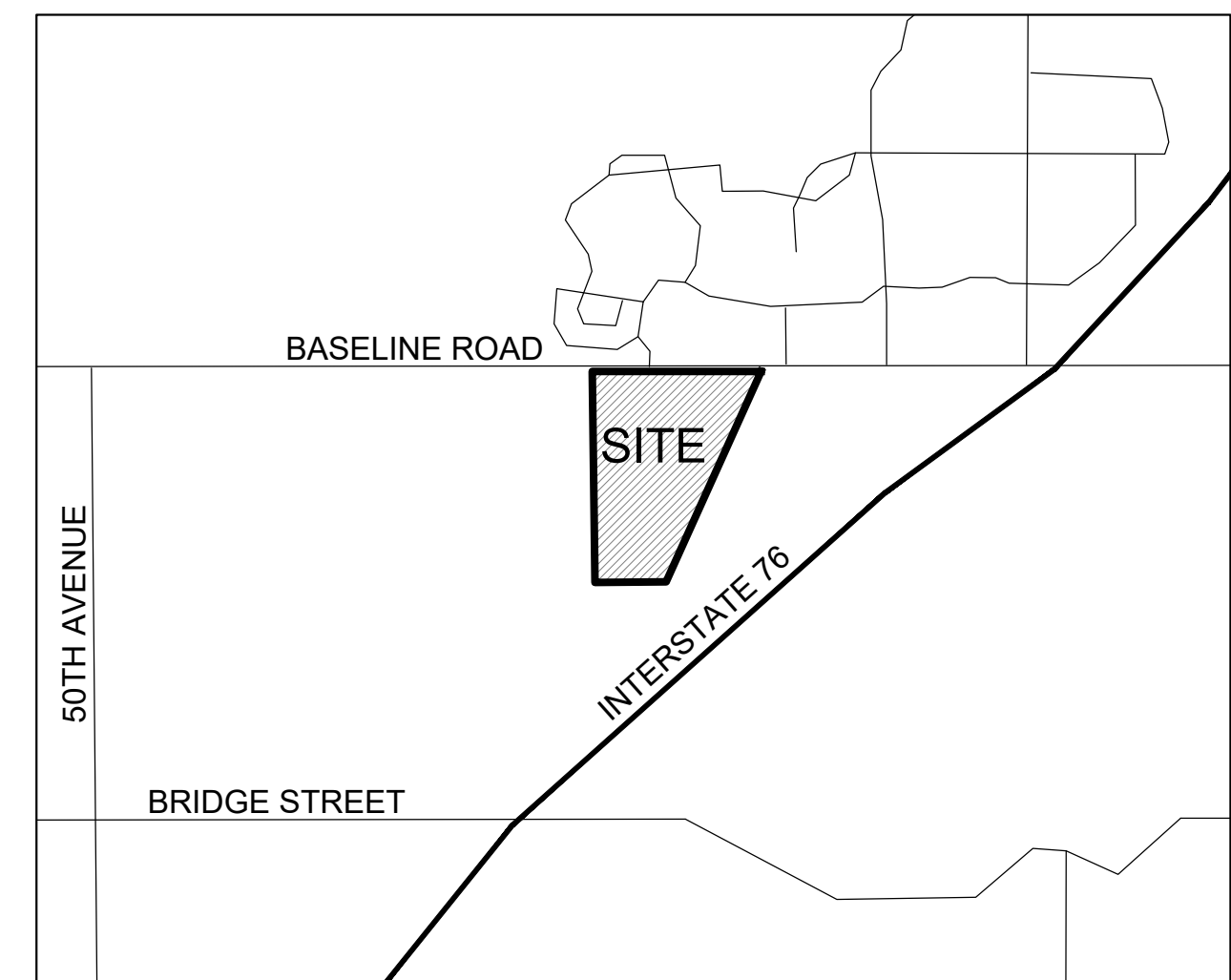
RIDGELINE VISTA

OVERALL DEVELOPMENT PLAN

LOCATED IN THE NORTHWEST QUARTER OF SECTION 1 TOWNSHIP 1 SOUTH,
RANGE 66 WEST OF THE SIXTH PRINCIPAL MERIDIAN, COUNTY OF ADAMS, STATE OF COLORADO



NOTE
The Ridgeline Vista P.U.D. will have access to Baseline Road and 60th Avenue, aligning with existing access points where possible. Each Planning Area will have access to Baseline Road and 60th Avenue, in compliance with the Transportation Master Plan. Internal access points are illustrative and conceptual in nature and will be finalized at the Final Plat.



PLANNING COMMISSION APPROVAL
APPROVED BY THE CITY OF BRIGHTON PLANNING COMMISSION,
THIS _____ DAY OF _____.

By: _____
CHAIRPERSON

CITY OF BRIGHTON APPROVAL
APPROVED BY THE CITY OF BRIGHTON CITY COUNCIL THIS
_____ DAY OF _____.

By: _____
MAYOR

ATTEST
By: _____
CITY CLERK

NO	REVISION RECORD	DATE
1	1ST SUBMITTAL	8-1-2018
2		
3		
4		

LANDSCAPE ARCHITECT / PLANNER:

henry design group
Landscape Architecture • Planning • Erittlements
1501 Wazee Street Suite 1-C, Denver, Colorado 80202
303.446.2368 • henydesigngroup.com

ENGINEER:

REDLAND
Where Great Places Begin
1000 West Colfax Ave., Suite 1000
Denver, Colorado 80202
P. REDLAND.COM

APPLICANT:

CORONADO WEST
Coronado West, LLC
8655 S. Priest Drive
Tempe, AZ 85284

RIDGELINE VISTA

JOB NO.:
DRAWN: AY
CHECKED: KH
ISSUE DATE: 8-9-18

SHEET:
OVERALL DEVELOPMENT PLAN
1 of 1