

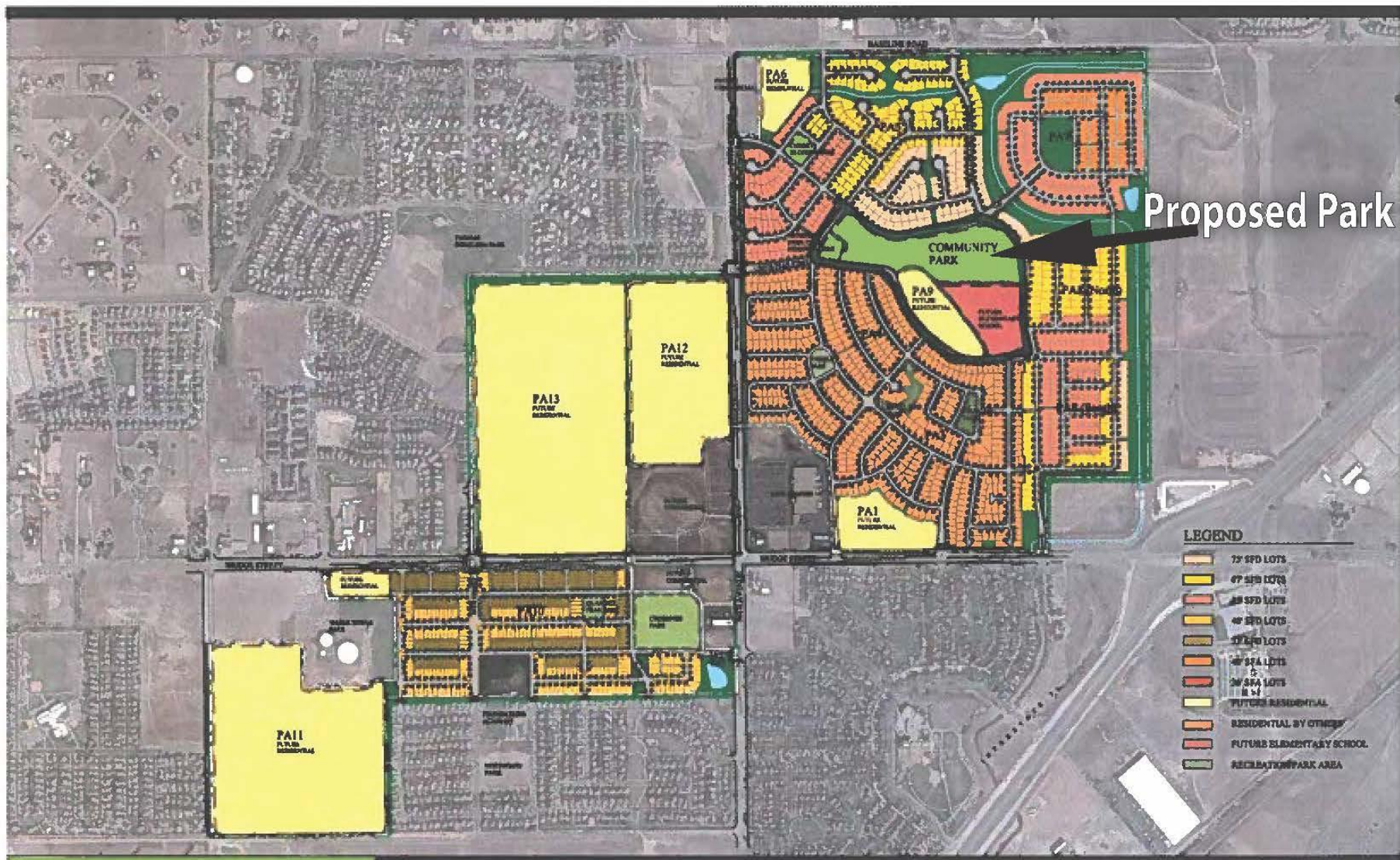
A RESOLUTION APPROVING THE FIRST
AMENDMENT TO THE CONSTRUCTION AND
MAINTENANCE AGREEMENT FOR THE
CONSTRUCTION OF A PARKING LOT
EXPANSION FOR THE VENTURE RECREATION
FACILITY



STRATEGIC PLAN FOCUS AREA



FACILITIES, AMENITIES, AND OPEN SPACE



Proposed Park

BRIGHTON CROSSINGS

OVERALL MASTER PLAN



Brookfield Residential
THE LAND PLANNING & DESIGN GROUP, INC.
Land Planning Site Planning Landscape Architecture
5300 WILLOW DR. Suite 102 FREDERICK, MARYLAND 21701
Phone: 301.545.1175 Fax: 301.545.0068



THIS EXHIBIT IS FOR ILLUSTRATIVE PURPOSES ONLY AND IS SUBJECT TO MODIFICATION. BROOKFIELD RESIDENTIAL MAKES NO WARRANTIES, EXPRESSED OR IMPLIED CONCERNING THE ACCURACY, COMPLETENESS, RELIABILITY, OR USABILITY OF THIS EXHIBIT.


BRIGHTON
CROSSINGS

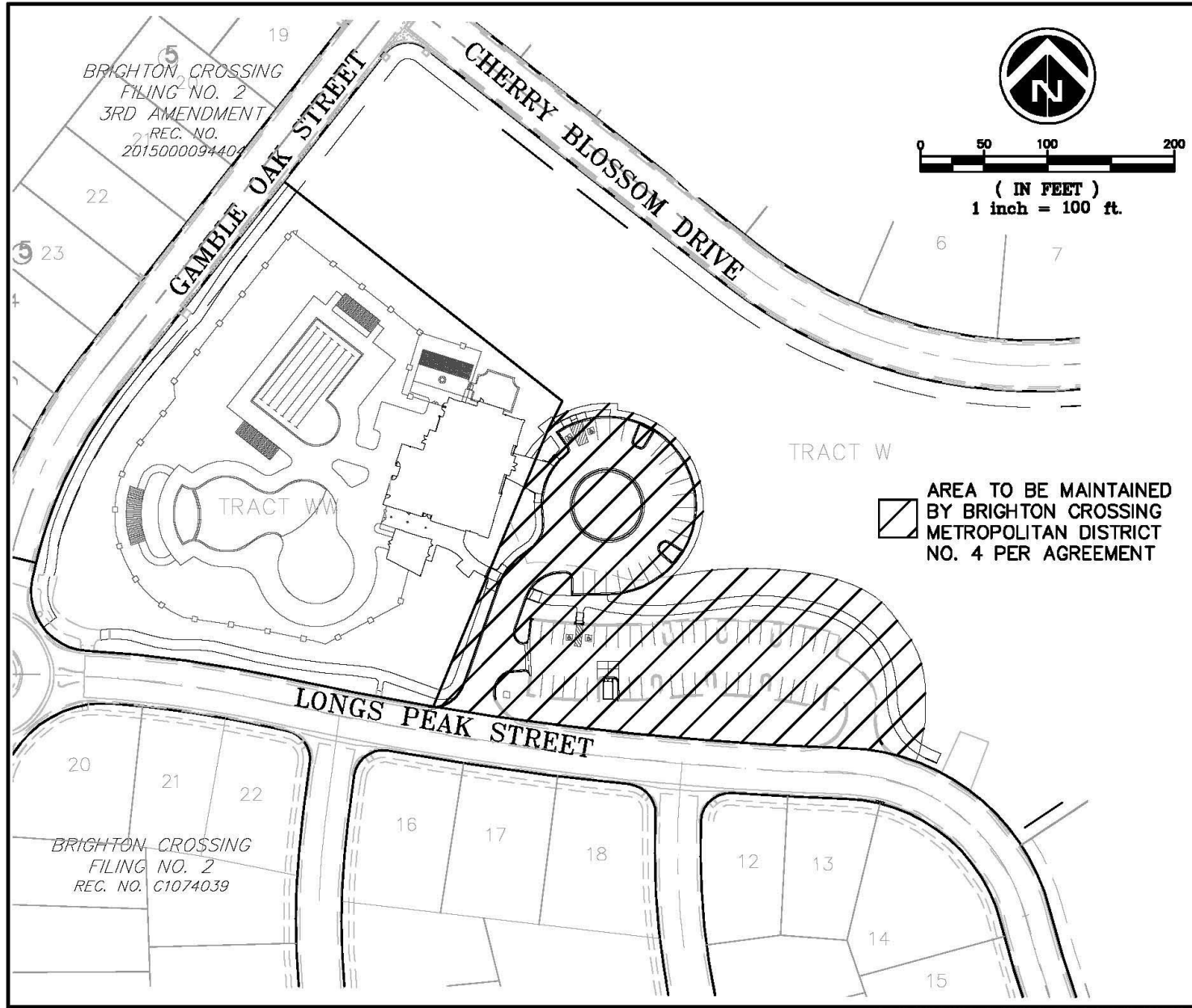
VENTURE PARK/
VENTURE CENTER



Brookfield
Residential

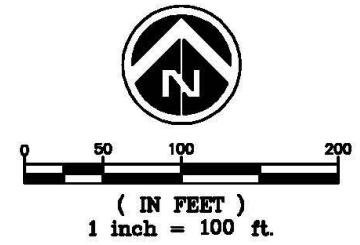
THE LAND PLANNING & DESIGN GROUP, INC.
LAND PLANNING — SITE PLANNING — LANDSCAPE ARCHITECTURE
5300 WEBVIEW DRIVE — SUITE 103 — FREDERICK, MARYLAND 21703
PHONE: 301-698-6172
FAX: 301-698-6024

- 
- IN 2004 THE CITY COUNCIL APPROVED A RESOLUTION APPROVING THE CONSTRUCTION AND OPERATION AGREEMENT TO CONSTRUCT A PARKING LOT THAT WOULD SERVICE THE BRIGHTON CROSSING BEACH CLUB AQUATIC FACILITY AND A FUTURE COMMUNITY PARK. THE PARKING LOT WAS CONSTRUCTED ON CITY LAND.
 - BROOKFIELD IS NOW CONSTRUCTING A NEW RECREATION FACILITY, INCLUDING AN AQUATIC AMENITY; THE VENTURE CENTER THAT WILL REPLACE THE BEACH CLUB.
 - THE CONSTRUCTION OF THE VENTURE CENTER WILL INCLUDE EXPANSION OF THE PARKING LOT IN VENTURE PARK.
 - BROOKFIELD WILL PAY THE COST TO CONSTRUCT AND OPERATE THE EXPANDED PARKING LOT AND LANDSCAPING. THE PARKING LOT WILL BE AVAILABLE FOR USE BY RESIDENTS USING VENTURE PARK.
 - VENTURE PARK WILL BE CONSTRUCTED IN 2020. AT THAT TIME A NEW MAINTENANCE AGREEMENT WILL BE DEVELOPED.



BRIGHTON CROSSING
 FILING NO. 2
 3RD AMENDMENT
 REC. NO.
 201500009440

BRIGHTON CROSSING
 FILING NO. 2
 REC. NO. C1074039



B ENGINEERING
 CONSULTANTS
 Contact: Suzanne C. Sibel, PE
 2011 Cherry Street, Suite 206 Louisville, CO 80027
 Phone: (720) 975-0177
 Email: sibel@bceengineering.net

EXHIBIT C
BRIGHTON CROSSING METROPOLITAN
DISTRICT NO. 4 MAINTENANCE EXHIBIT

Project Number:
 132007
 Date:
 09-07-2018
 Scale:
 1" = 100'
 Sheet Number:
 1 of 1



→ QUESTIONS