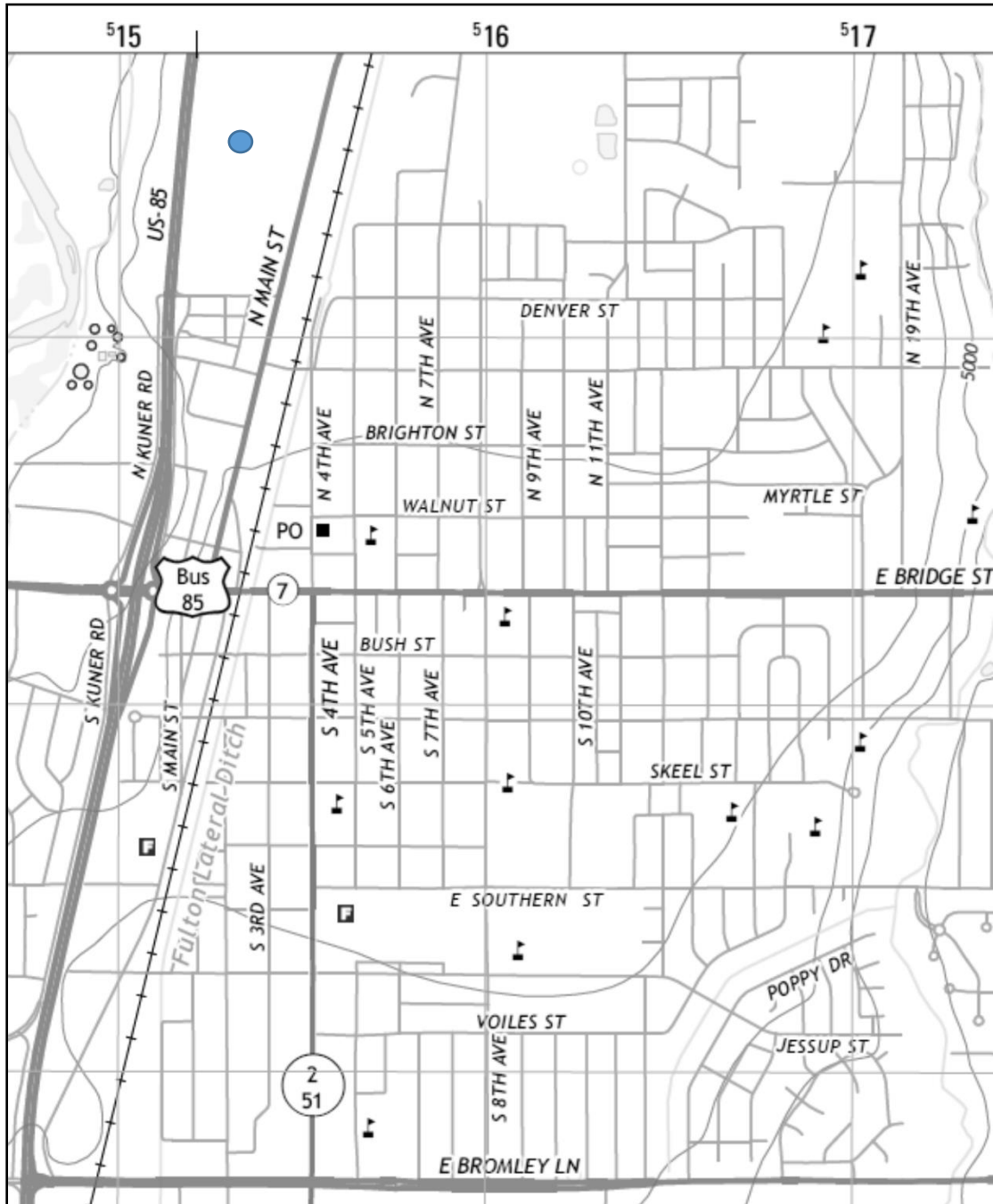




ATTACHMENT 3 - MAPS AND IMAGES



Location/USGS map. Portion of Brighton, Colorado, 7.5 minute USGS topographic map, Revision 1, 2013. The property is marked by the blue circle



Figure 1: Southeast facade



Figure 2: South facade



Figure 3: Southwest facade



Figure 4: Silos Southwest facade

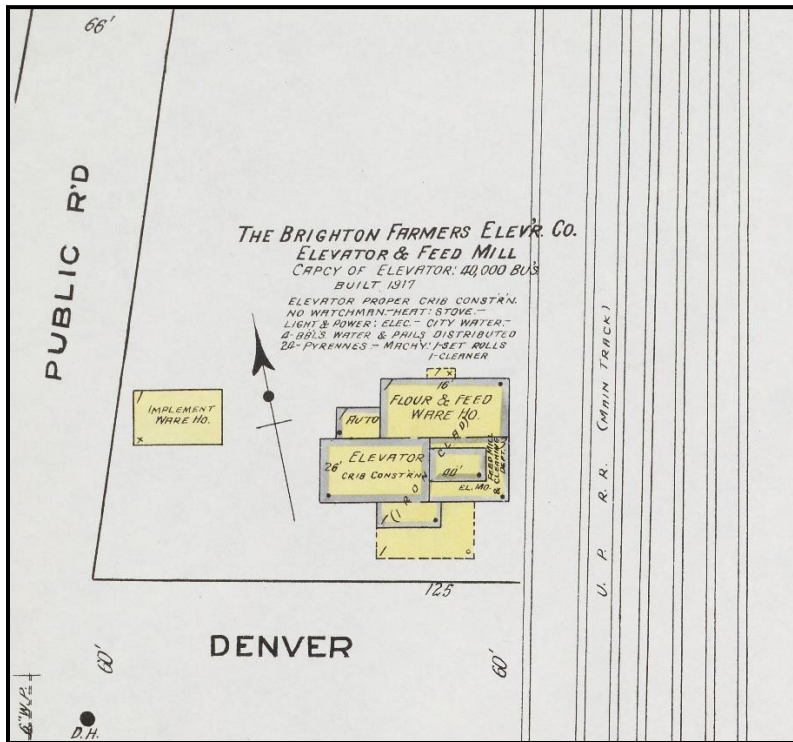


Figure 5: 1920 Sanborn Map.

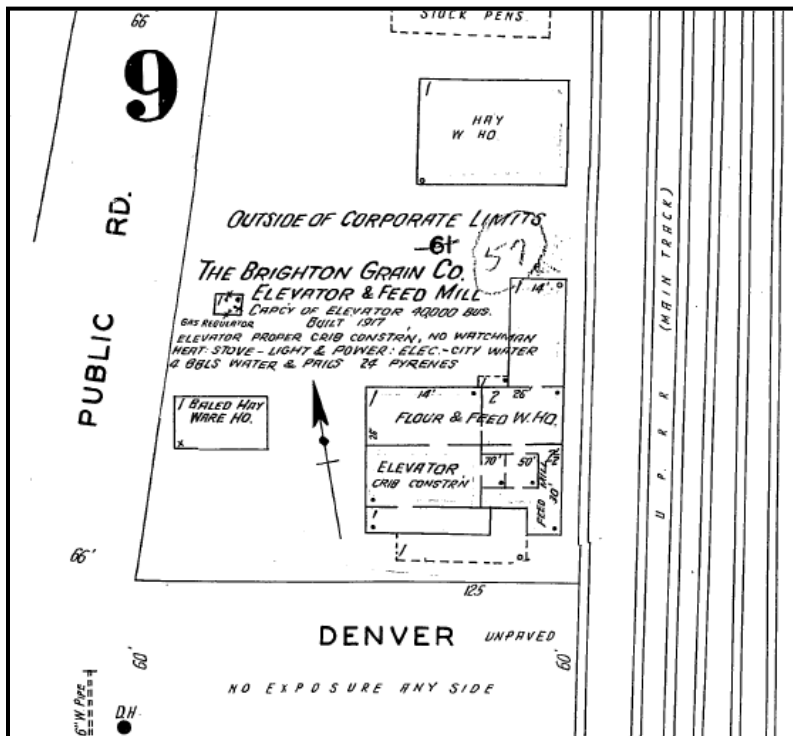


Figure 6: 1948 Sanborn Map.



Sketch Map. The parcel boundary is outlined in black and follows the building's footprint (the land is owned by the Union Pacific). *Source:* Adams County Assessor, GIS Interactive Map.