



Erger's Pond Spillway and Slope Protection Project

Presenting: Curtis Bauers, Utilities Director

Project Manager: Casey Ballard, Staff Engineer

Strategic Focus

Supportive and Sustainable Infrastructure



Introduction

- ◆ Project Background
- ◆ Project Details
- ◆ Work Areas and Permitting
- ◆ Bid Process and Results
- ◆ Final Recommendation

Project Background



Project Background

- ◆ Erger's Pond will store approximately 1,800 Acre-Feet (AF)
- ◆ Erosion issues from waves damage the slopes and also inhibit the City's ability to move water out water quickly
- ◆ 5-year rain event can raise water levels in the SPR, causing overtopping into Erger's and slope damage

Project Background

- ◆ Erosion has occurred at Erger's
- ◆ Caused by waves when lowering the reservoir

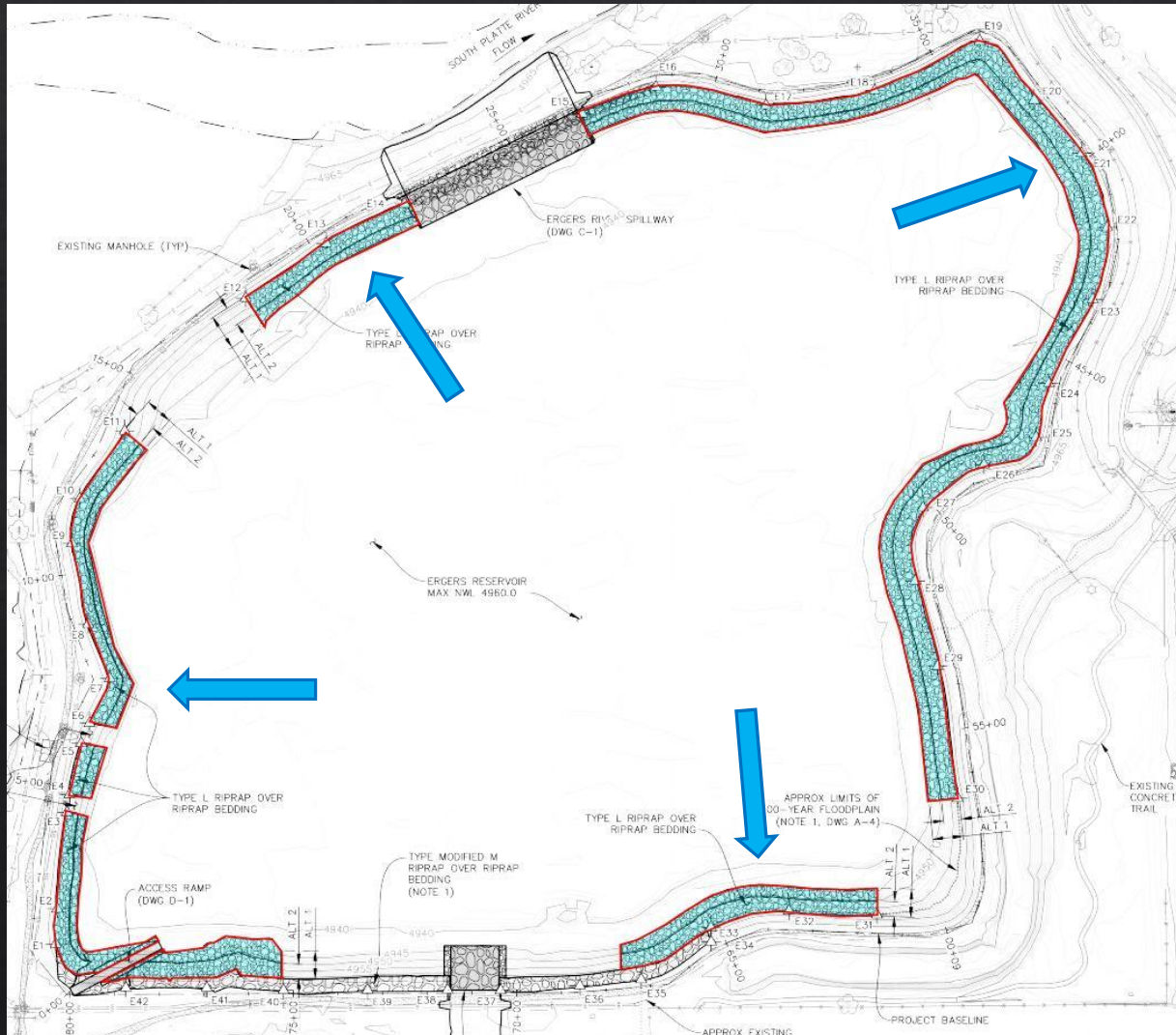


Erosion at Erger's.

Project Details

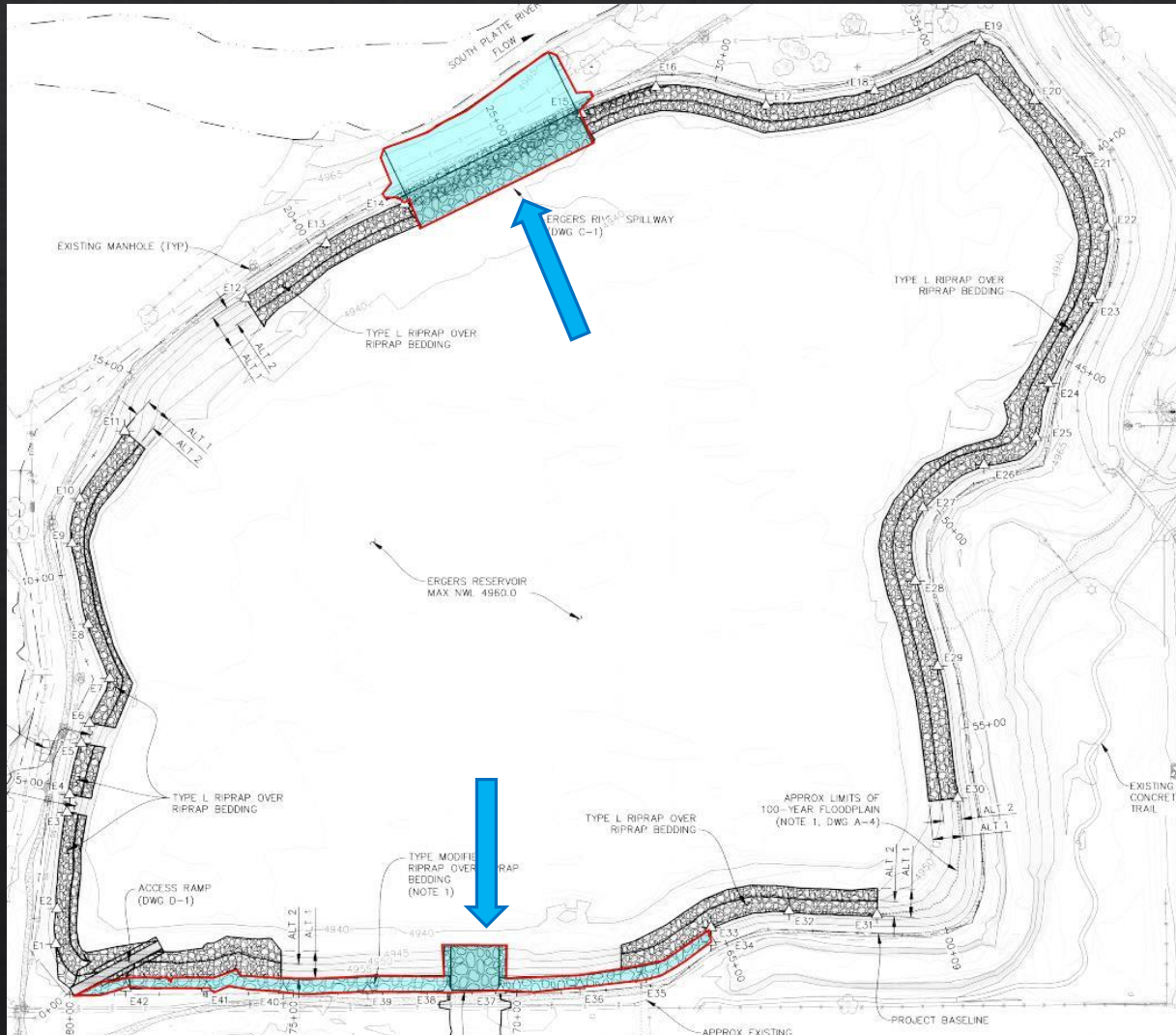
- ◆ Scope of Work
 - ◆ Rip Rap Embankment Protection
 - ◆ Spillways
 - ◆ Access Ramp

Embankment Protection



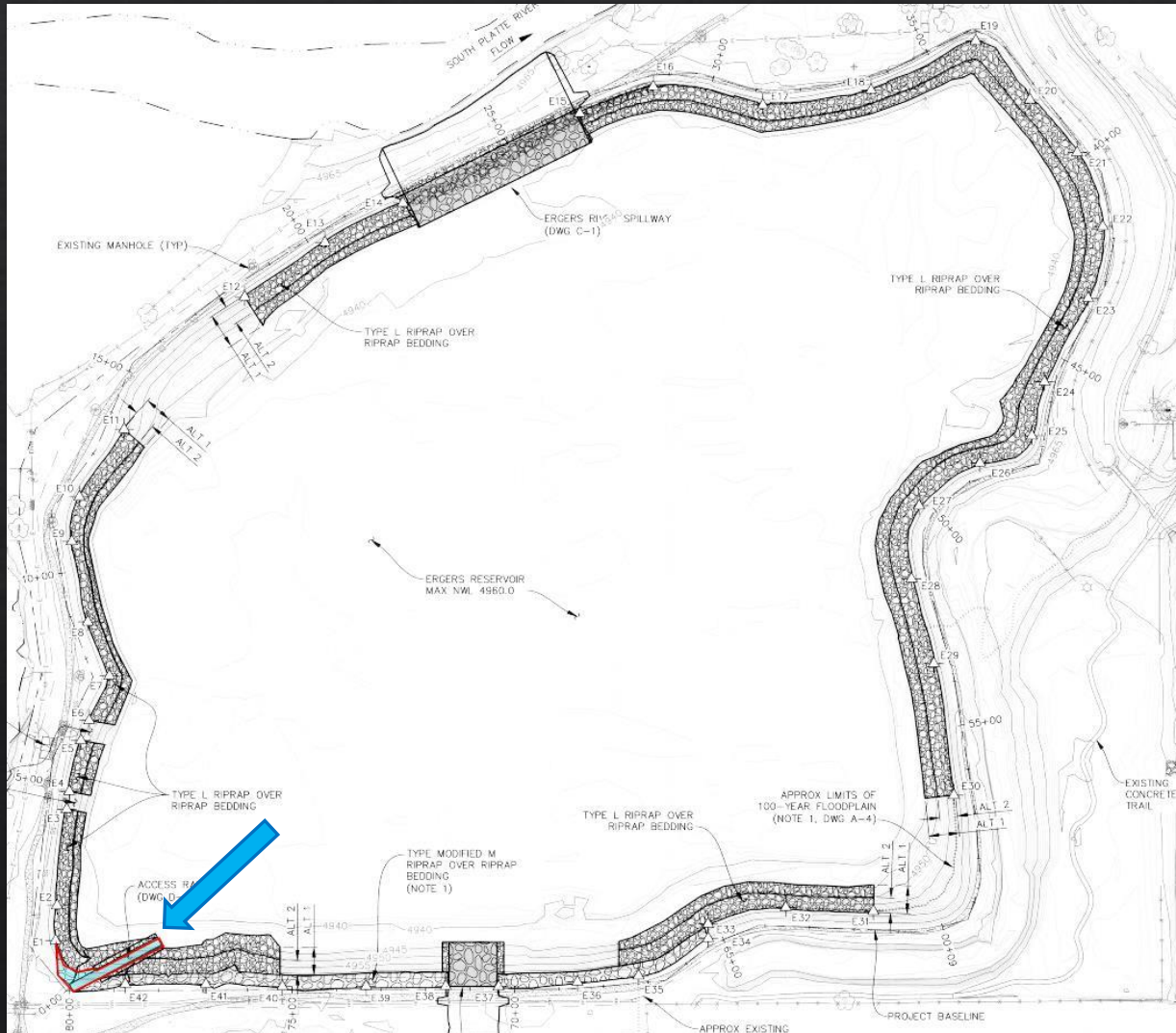
- ◆ Project was bid with two (2) levels of embankment protection
- ◆ The difference in embankment protection is how far down the side slope the protection extends
- ◆ Based on costs and potential use it was determined bid alternate 1 was the most beneficial and economic

Spillways



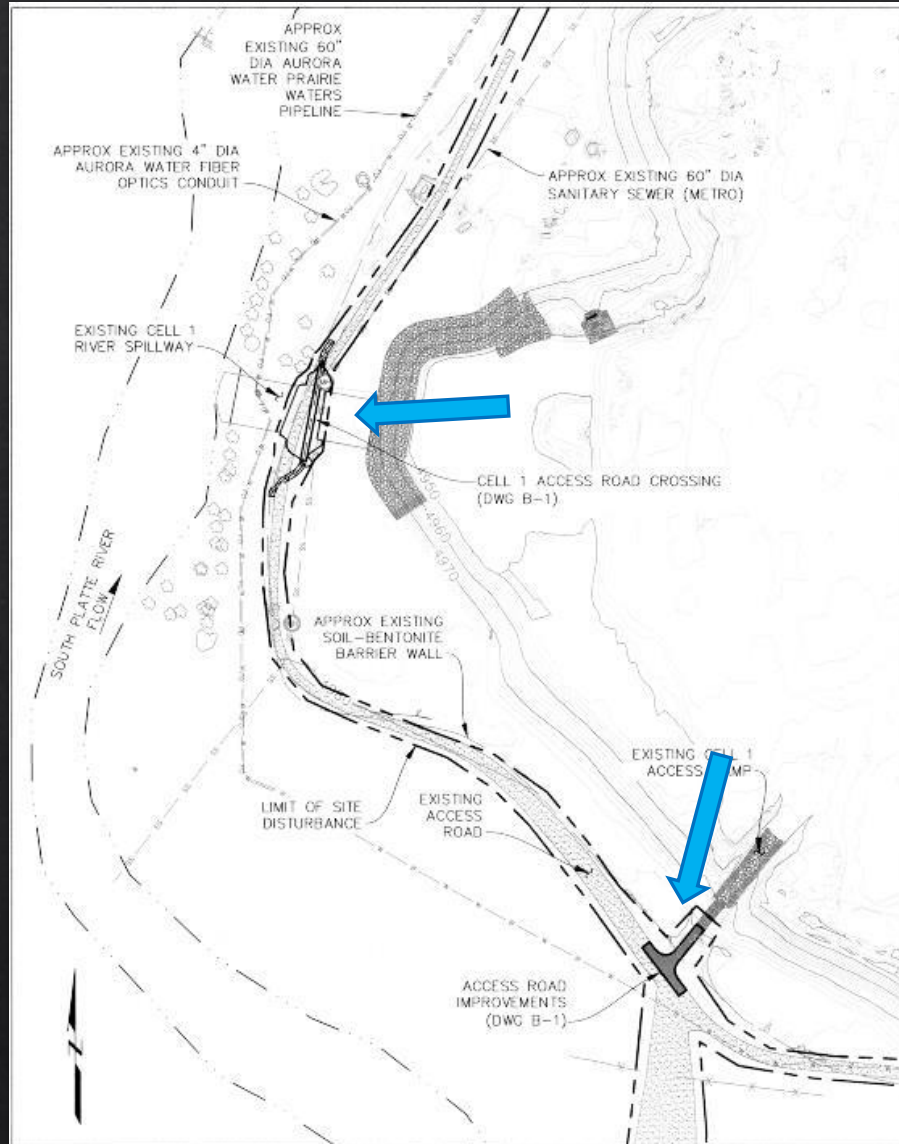
- ◇ Two (2) spillways are included with the project to convey excess water deposited in Cell 1 during a 5-year rain event
- ◇ This will control the flow of water and prevent damage to the reservoirs when the Cell 1 spillway activates

Access Ramp



- ◆ A new access ramp into Erger's Pond to allow for maintenance equipment

Access Ramp



- ◇ Modification to an existing access ramp entrance based on roadway realignment
- ◇ Installation of a new access road crossing in the existing Cell 1 spillway

Bid Process and Results

- ◆ Formal Bid Process
 - ◆ Bids due May 14th, 2018
 - ◆ Seven (7) bids received
- ◆ Edge Contracting had the low bid at \$3,208,110.00
 - ◆ This is for Bid Alternate 1
 - ◆ Includes Rip Rap protection to 2/3 empty
- ◆ Spending authority for this project is derived from existing 2018 capital project appropriations, as adopted by Council in October 2017.

Final Recommendation

Staff believes that selecting Edge Contracting for the Erger's Pond Spillways and Slope Protection project would accomplish the following:

- ◇ Conclude the project by June 2019 and thus allow Erger's Pond to be filled with free river from the South Platte during spring runoff
- ◇ Provide the opportunity to continue value engineering efforts to find areas of cost savings

Questions?