

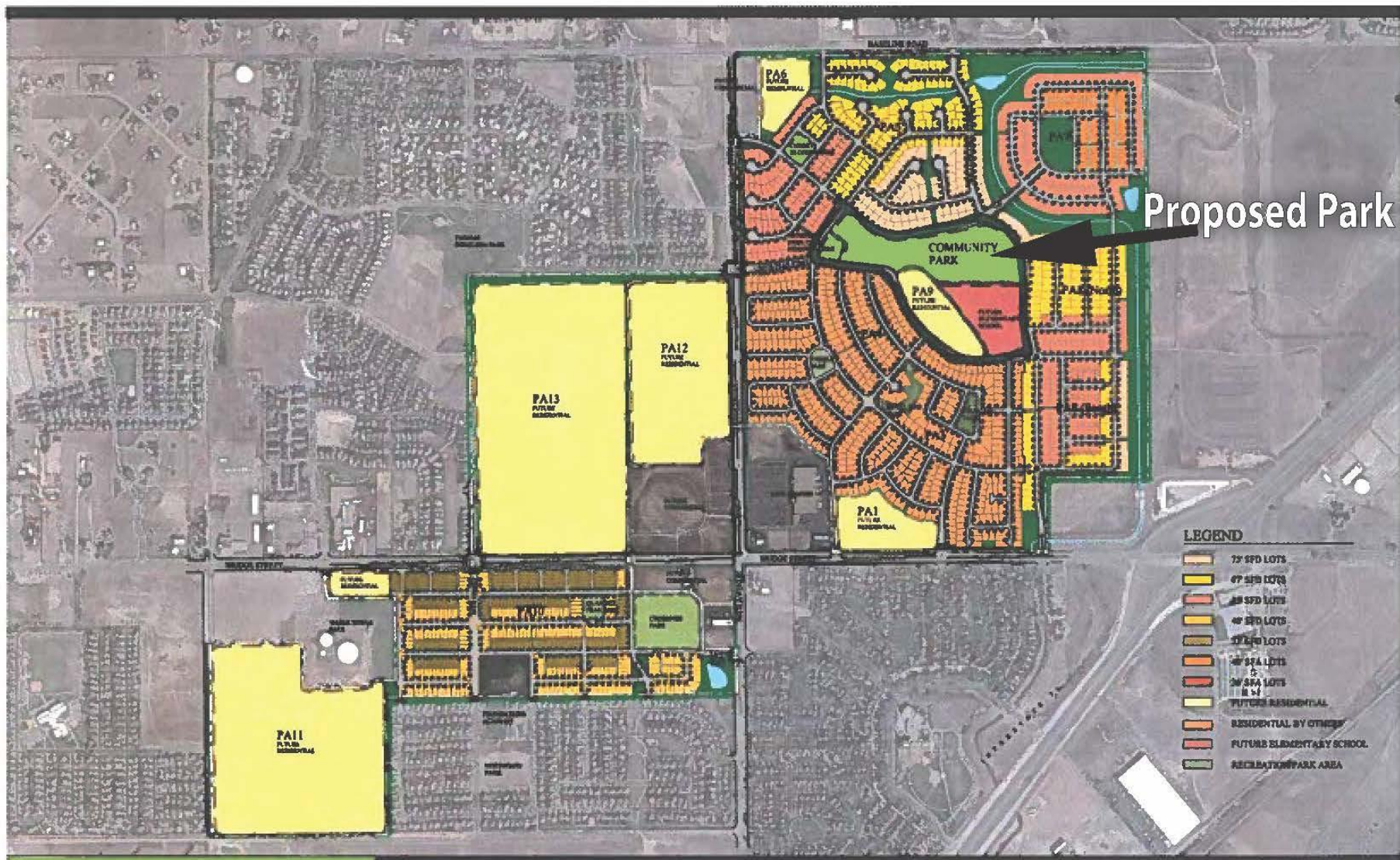


A Resolution approving the First  
Amendment to the Construction and  
Maintenance Agreement for the  
construction of a parking lot expansion for  
the Venture Recreation Facility

# STRATEGIC PLAN FOCUS AREA



FACILITIES, AMENITIES, AND OPEN SPACE



Proposed Park

**BRIGHTON CROSSINGS**

OVERALL MASTER PLAN



**Brookfield Residential**  
THE LAND PLANNING & DESIGN GROUP, INC.  
LAND PLANNING    SITE PLANNING    LANDSCAPE ARCHITECTURE  
5300 WILLOW DRY    SUITE 102    FREDERICK, MARYLAND 21730  
PHONE 301.545.1175    FAX 301.545.0068



THIS EXHIBIT IS FOR ILLUSTRATIVE PURPOSES ONLY AND IS SUBJECT TO MODIFICATION. BROOKFIELD RESIDENTIAL MAKES NO WARRANTIES, EXPRESSED OR IMPLIED CONCERNING THE ACCURACY, COMPLETENESS, RELIABILITY, OR USABILITY OF THIS EXHIBIT.


**BRIGHTON**  
**CROSSINGS**


VENTURE PARK/  
VENTURE CENTER

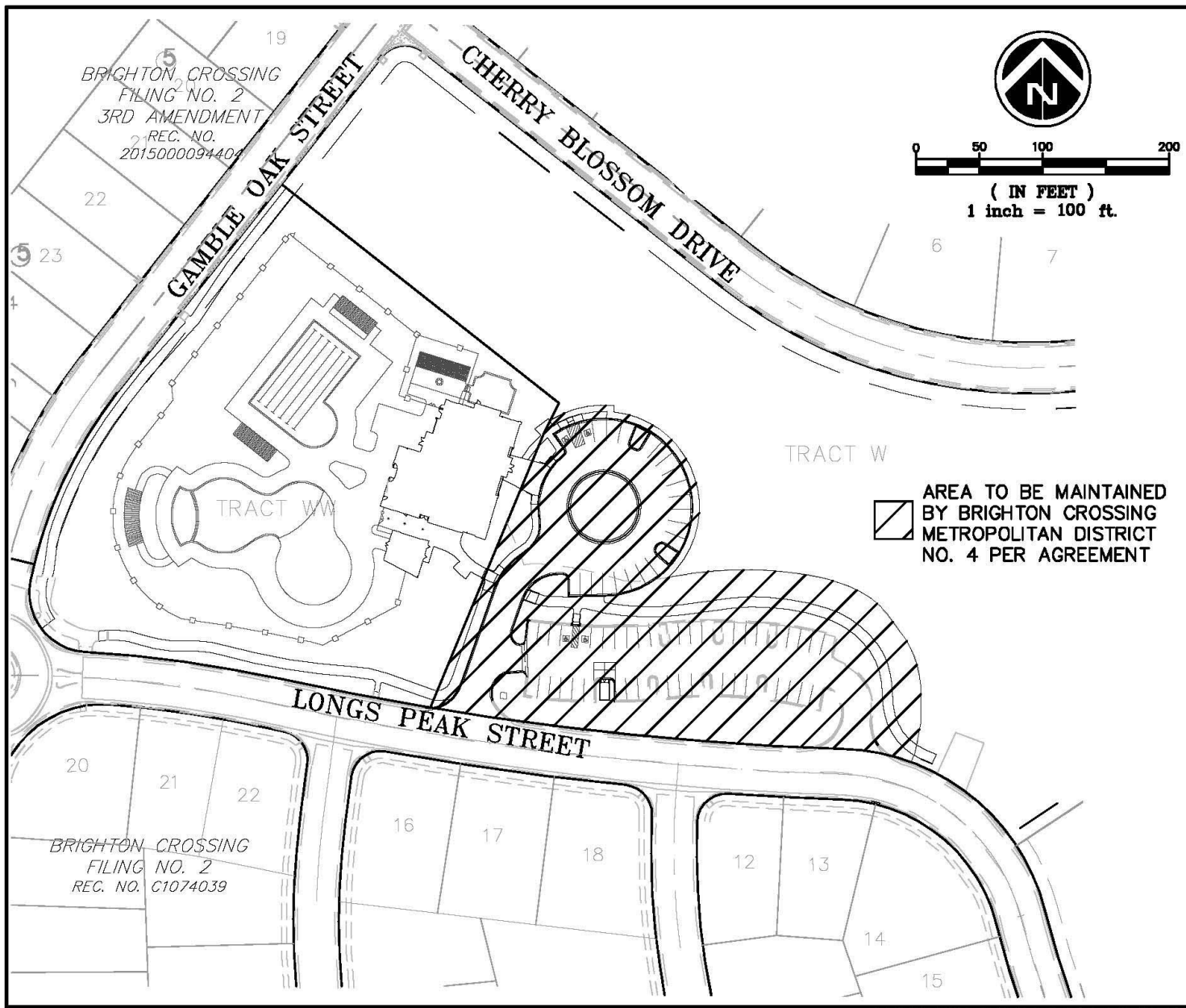


**Brookfield**  
Residential

THE LAND PLANNING & DESIGN GROUP, INC.  
LAND PLANNING | SITE PLANNING | LANDSCAPE ARCHITECTURE  
5300 WEBVIEW DRIVE - SUITE 103 - FREDERICK, MARYLAND 21703  
PHONE: 301-698-6172  
FAX: 301-698-6024

- 
- In 2004, the City Council approved via resolution the Construction and Operation Agreement between the City and the Brighton Crossing Metro District # 4 to construct a parking lot that would service the Brighton Crossing Beach Club Aquatic Facility and a future community park. The parking lot was constructed on City land.
  - Brighton Crossing Metro District # 4 is now constructing a new recreation facility, including an aquatic amenity, the “Venture Center,” that will replace the Beach Club.
  - The construction of the Venture Center will include expansion of the parking lot in Venture Park.

- 
- The Metro District will pay the cost to construct and operate the expanded parking lot and landscape. The parking lot will be available for use by the residents using Venture Park.
  - Venture Park will be constructed in 2020, at which time a new maintenance agreement will be developed.



**ENGINEERING  
CONSULTANTS**

Contact: Suzanne O. Sibel, PE  
2011 Cherry Street, Suite 200, Loveland, CO 80527  
Phone: (970) 979-0177  
Email: susibel@engconsultants.net

**EXHIBIT C**  
**BRIGHTON CROSSING METROPOLITAN  
DISTRICT NO. 4 MAINTENANCE EXHIBIT**

Project Number: 132007	Date: 09-07-2018	Scale: 1" = 100'	Sheet Number: 1 of 1
---------------------------	---------------------	---------------------	-------------------------



# → QUESTIONS