

RESOLUTION NO. 2019-88

A RESOLUTION OF THE CITY COUNCIL OF THE CITY OF BRIGHTON, COLORADO, APPROVING A PLAT AMENDMENT FOR THE VILLAGE AT SOUTHGATE BRIGHTON, FILING 2, AN APPROXIMATE 15.45 ACRE PROPERTY, LOCATED WITHIN BLOCK 3, LOT 1 AND BLOCK 4 OF THE VILLAGE AT SOUTHGATE BRIGHTON, GENERALLY LOCATED IN SECTION 1, TOWNSHIP 2 SOUTH, RANGE 67 WEST OF THE 6TH PRINCIPAL MERIDIAN, CITY OF BRIGHTON, COUNTY OF ADAMS, STATE OF COLORADO, AND SETTING FORTH OTHER DETAILS RELATED THERETO

WHEREAS, Meritage Homes, LLC, (the “Owner”) owns an approximately 15.45 acre property, generally located south of E. 120th Avenue, east of Peoria Street, and west of Potomac Street, and more specifically described in EXHIBIT A, attached hereto (the “Property”); and

WHEREAS, Kip Gilleland, Arcus Southgate, LLC, (the “Developer”), on behalf of the Owner, has requested approval of the Village at Southgate Brighton, Filing 2, Plat Amendment attached hereto as EXHIBIT B (the “Plat Amendment”); and

WHEREAS, the Property was annexed to the City of Brighton (the “City”) on August 2, 1988 and zoned as the Southgate Brighton PUD (Planned Unit Development) on February 4, 2014, and amended as the Southgate Brighton PUD, 3rd Amendment on March 19, 2019; and

WHEREAS, the Planning Commission, during a public hearing held on January 28, 2014, approved a Preliminary Plat for the Property; and

WHEREAS, the City Council approved the Village at Southgate Brighton Final Plat (Filing 1), on August 15, 2015; and

WHEREAS, the City Council conducted a public hearing, during a meeting, on September 3, 2019, to review and consider a Plat Amendment Application for the Property; and

WHEREAS, the City Council finds and declares that, a Notice of Public Hearing was posted on the Property, mailed to neighbors within 300 feet, and published in the Brighton Standard Blade, for no less than fifteen (15) days prior to the date of the City Council public hearing; and

WHEREAS, the City Council has reviewed the Plat Amendment pursuant to the applicable provisions and criteria set forth in the Municipal Code; and

WHEREAS, the City Council finds and declares that the Plat Amendment does comply with the requirements of the Plat Amendment procedures and regulations, provides consistency with the purpose and intent of the regulations, provides compatibility with surrounding areas, is harmonious with the character of the neighborhood, is not detrimental to the immediate area, is not detrimental to the future development of the area, and is not detrimental to the health, safety, or welfare of the inhabitants of the City.

NOW THEREFORE, BE IT RESOLVED BY THE CITY COUNCIL OF THE CITY OF BRIGHTON, COLORADO AS FOLLOWS:

Section 1. That the Village at Southgate Brighton, Filing 2, Plat Amendment attached hereto as **EXHIBIT B**, is hereby approved.

Section 2. That the Mayor is authorized to execute the Plat Amendment for the Village at Southgate Brighton, Filing 2, and in furtherance thereof, that the City Manager and/or his designees are hereby authorized and directed to execute such additional documents, agreements and/or related instruments, and to take such acts as are reasonably necessary, to carry out the terms and provisions of the Agreement, for and on behalf of the City of Brighton.

RESOLVED this 3rd day of September, 2019.

CITY OF BRIGHTON, COLORADO

KENNETH J. KREUTZER, Mayor

ATTEST:

NATALIE HOEL, City Clerk

APPROVED AS TO FORM:

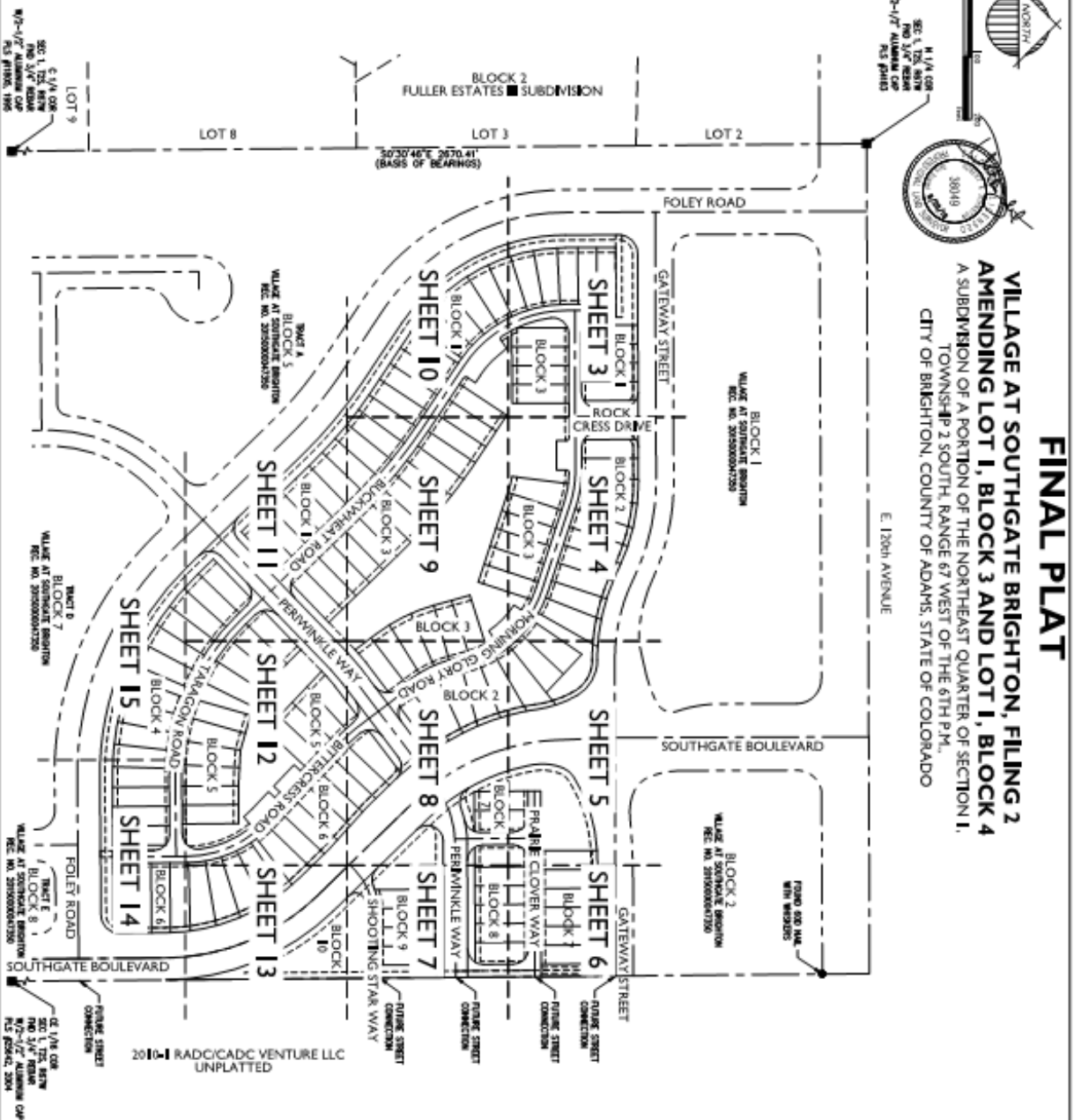
JACK D. BAJOREK, City Attorney

EXHIBIT A

LEGAL DESCRIPTION

Lot 1, Block 3 and Lot 1, Block 4 of Village at Southgate Brighton Subdivision, City of
Brighton, County of Adams, State of Colorado.

Said parcel described above contains a total of 15.45 acres more or less.





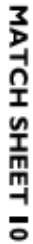
**VILLAGE AT SOUTHGATE BRIGHTON, FILING 2
AMENDING LOT 1, BLOCK 3 AND LOT 1, BLOCK 4
A SUBDIVISION OF A PORTION OF THE NORTHEAST QUARTER OF SECTION 1,**

TOWNSHIP 2 SOUTH, RANGE 67 WEST OF THE 6TH P.M.,
CITY OF BRIGHTON, COUNTY OF ADAMS, STATE OF COLORADO

WALKER AT SOUTHWEST CORNER
1ST F, BLOCK 1
RECEPTION / RECEPTIONIST
NOT A PART

DIMENSION
MIS

SCALE: 1"=500'



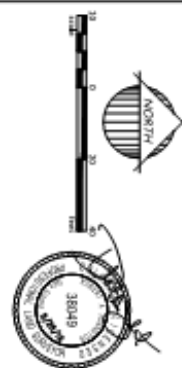
MATCH SHEET 4

Project: **VILLAGE AT SOUTHGATE BRIGHTON, FILING 2**
LOT 1, BLOCK 3 AND LOT 1, BLOCK 4
 BRIGHTON, COLORADO

FINAL PLAT

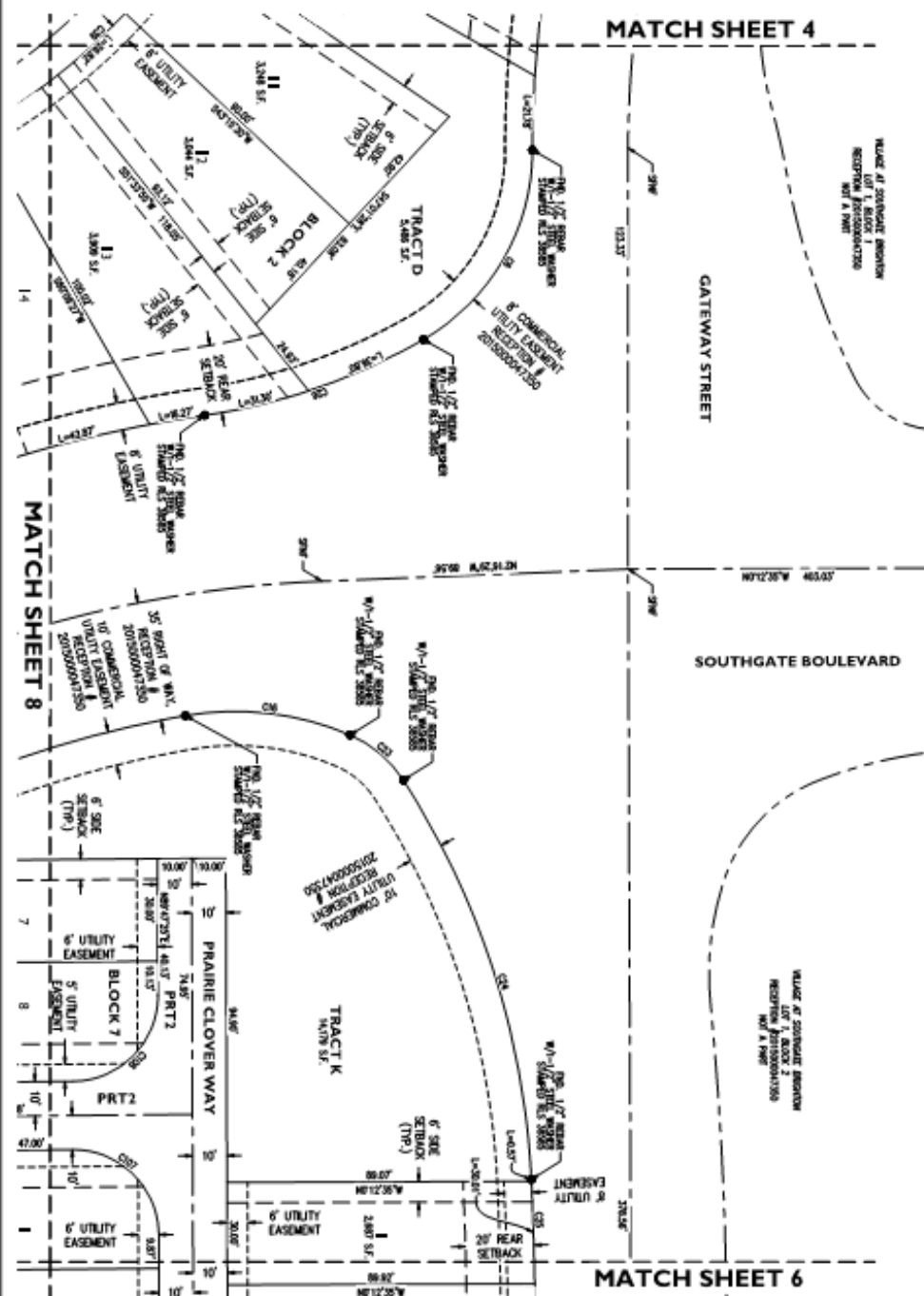
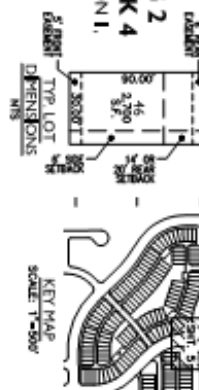


11110 N. Alma School Rd., Suite 120
Mesa, AZ 85201
T: 480.203.2250 | F: 480.503.2258
www.epagroupinc.com



FINAL PLAT

**VILLAGE AT SOUTHGATE BRIGHTON, FILING 2
AMENDING LOT 1, BLOCK 3 AND LOT 1, BLOCK 4
A SUBDIVISION OF A PORTION OF THE NORTHEAST QUARTER OF SECTION 1,
TOWNSHIP 2 SOUTH, RANGE 67 WEST OF THE 6TH P.M.,
CITY OF BRIGHTON, COUNTY OF ADAMS, STATE OF COLORADO**



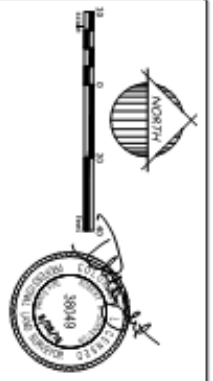
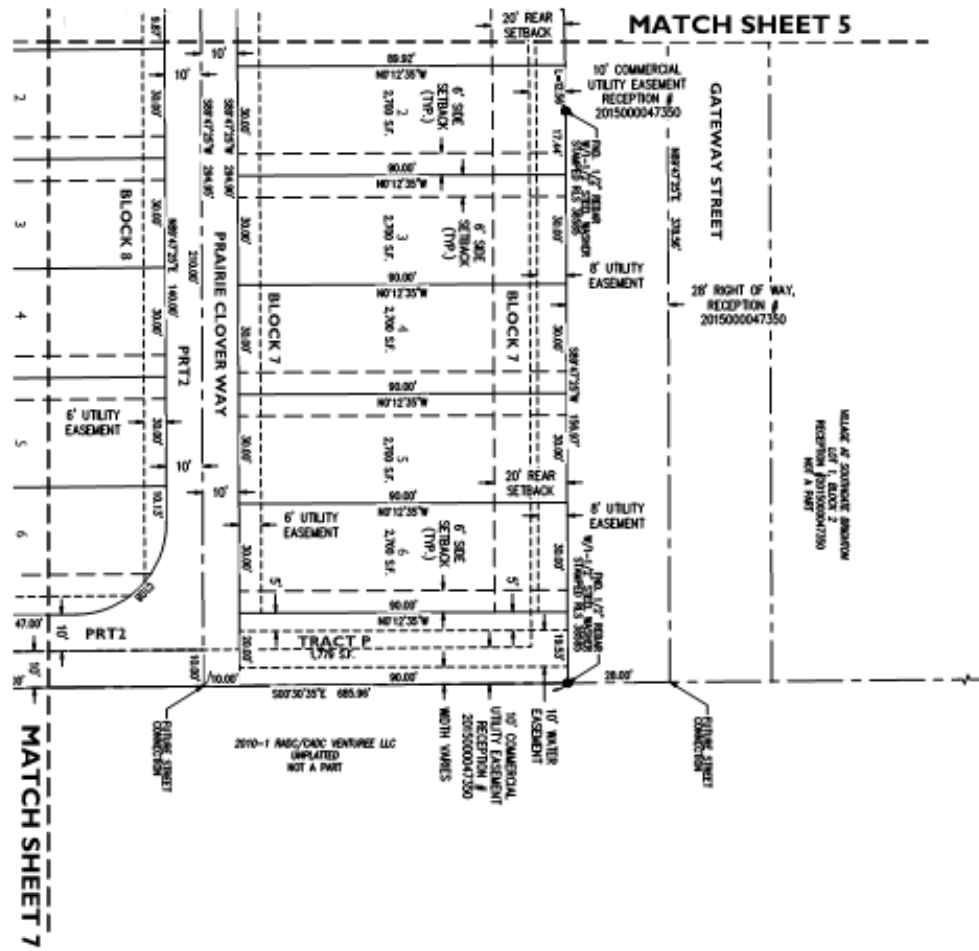
VILLAGE AT SOUTHGATE BRIGHTON, FILING 2
LOT 1, BLOCK 3 AND LOT 1, BLOCK 4

FINAL PLAT

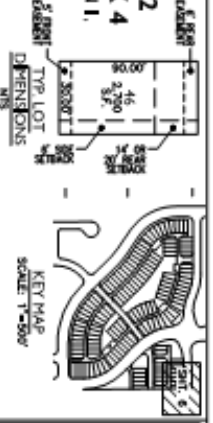


11110 N. Alma School Rd, Suite 120
Mesa, AZ 85201
T: 480.503.2250 | F: 480.503.2258
www.springspringinc.com

Drawn by	PL
Job No.	18-480
PLAT	
Sheet No.	5
	of 15



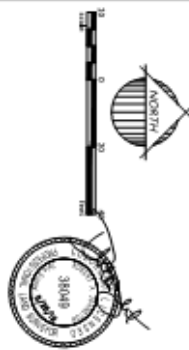
FINAL PLAT
VILLAGE AT SOUTHGATE BRIGHTON, FILING 2
AMENDING LOT 1, BLOCK 3 AND LOT 1, BLOCK 4
A SUBDIVISION OF A PORTION OF THE NORTHEAST QUARTER OF SECTION 1,
TOWNSHIP 2 SOUTH, RANGE 67 WEST OF THE 6TH P.M.,
CITY OF BRIGHTON, COUNTY OF ADAMS, STATE OF COLORADO



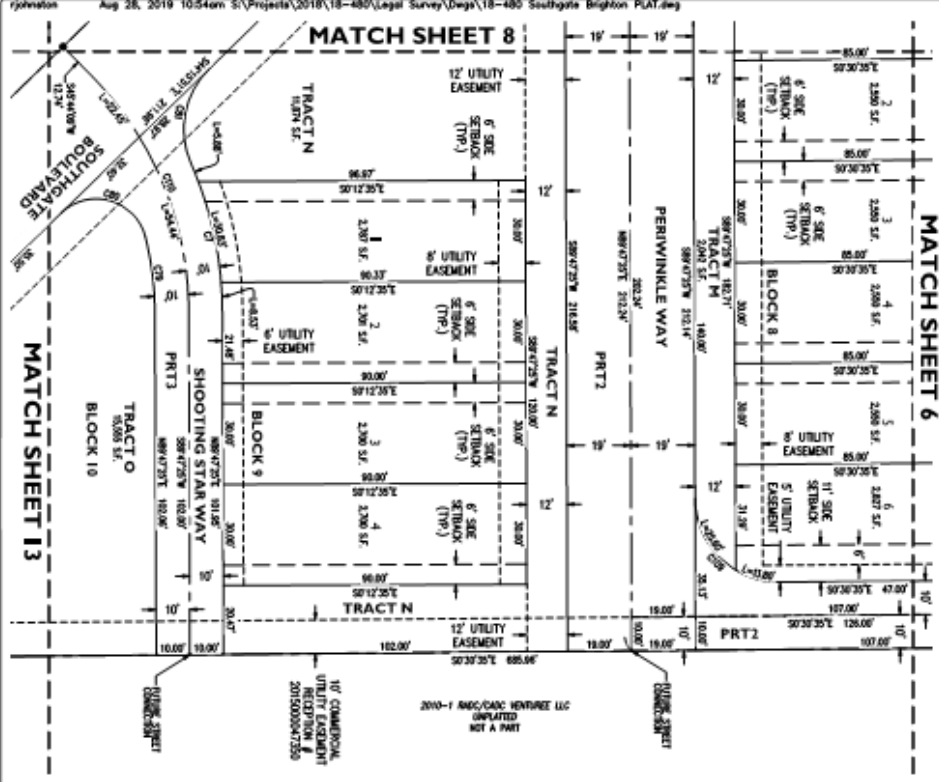
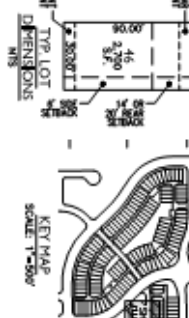
CLAVE TABLE									
CONE	LENGTH	BEARINGS	DETA	WADSWORTH	CORNER	CORNER	CORNER	CORNER	BEARS
C1	42.12'	30.00'	90°00'00"	30.00'	42.42'	54.42'35"			
C2	142.87'	302.00'	268°00'00"	74.87'	142.73'	87°00'30"			
C3	158.19'	350.00'	268°00'00"	81.37'	158.40'	57°00'30"			
C4	138.87'	300.00'	268°00'00"	68.87'	134.86'	57°00'30"			
C5	148.14'	328.00'	268°00'00"	73.86'	142.86'	87°00'45"			
C6	87.00'	84.00'	60°00'00"	38.87'	84.00'	88°00'30"			
C7	42.34'	110.00'	232°34'42"	22.34'	44.00'	57°00'35"			
C8	134.32'	350.00'	268°00'00"	67.32'	133.50'	88°00'30"			
C9	258.52'	350.00'	41°59'31"	134.31'	258.80'	88°00'30"			
C10	188.18'	35.00'	34°54'42"	87.34'	188.36'	57°00'30"			
C11	198.36'	398.00'	05°37'30"	99.37'	198.67'	88°00'30"			
C12	358.37'	350.00'	43°00'00"	179.40'	358.67'	88°00'30"			
C13	307.28'	350.00'	43°00'00"	153.64'	308.83'	88°00'30"			
C14	44.77'	28.86'	90°00'00"	28.86'	40.31'	88°00'30"			
C15	294.87'	350.00'	43°00'00"	154.87'	298.82'	57°00'30"			
C16	48.18'	80.00'	232°00'00"	23.20'	48.48'	50°00'30"			
C17	374.87'	484.00'	48°14'42"	188.17'	384.43'	50°00'30"			
C18	462.57'	500.00'	49°14'42"	251.50'	462.70'	50°00'30"			
C19	164.87'	488.00'	12°14'42"	73.47'	164.80'	50°00'30"			
C20	158.18'	450.00'	12°14'42"	77.09'	157.67'	50°00'30"			
C21	343.87'	350.00'	58°14'03"	187.02'	353.86'	50°00'30"			
C22	308.18'	34.00'	58°14'03"	167.78'	305.86'	50°00'30"			
C23	30.13'	30.00'	232°00'00"	15.06'	29.63'	54°00'30"			
C24	154.18'	327.00'	268°00'00"	77.09'	152.77'	57°00'30"			
C25	43.18'	97.00'	272°00'00"	23.50'	43.14'	58°00'30"			
C26	48.18'	178.00'	31°00'00"	24.47'	87.00'	88°00'30"			
C27	36.37'	35.00'	90°00'00"	17.69'	35.36'	54°00'30"			
C28	42.35'	25.00'	97°00'00"	12.50'	37.86'	54°00'30"			
C29	36.37'	35.00'	90°00'00"	17.69'	35.36'	54°00'30"			
C30	36.37'	35.00'	90°00'00"	17.69'	35.36'	54°00'30"			
C31	36.37'	35.00'	90°00'00"	17.69'	35.36'	54°00'30"			
C32	36.37'	35.00'	90°00'00"	17.69'	35.36'	54°00'30"			
C33	36.18'	175.00'	18°00'00"	28.37'	35.87'	88°00'30"			
C34	59.37'	185.00'	18°00'00"	29.44'	59.11'	88°00'30"			
C35	48.87'	185.00'	18°00'00"	24.47'	48.87'	88°00'30"			
C36	6.38'	4.00'	90°00'00"	4.00'	5.66'	88°00'30"			
C37	8.38'	4.00'	97°00'00"	4.00'	5.77'	54°00'30"			
C38	171.77'	175.00'	58°14'24"	85.87'	184.86'	88°00'30"			
C39	188.36'	188.00'	58°14'24"	94.18'	174.36'	88°00'30"			
C40	57.57'	185.00'	22°00'00"	28.54'	57.13'	88°00'30"			

Project: **VILLAGE AT SOUTHGATE BRIGHTON, FILING 2**
LOT 1, BLOCK 3 AND LOT 1, BLOCK 4
BRIGHTON, COLORADO
FINAL PLAT

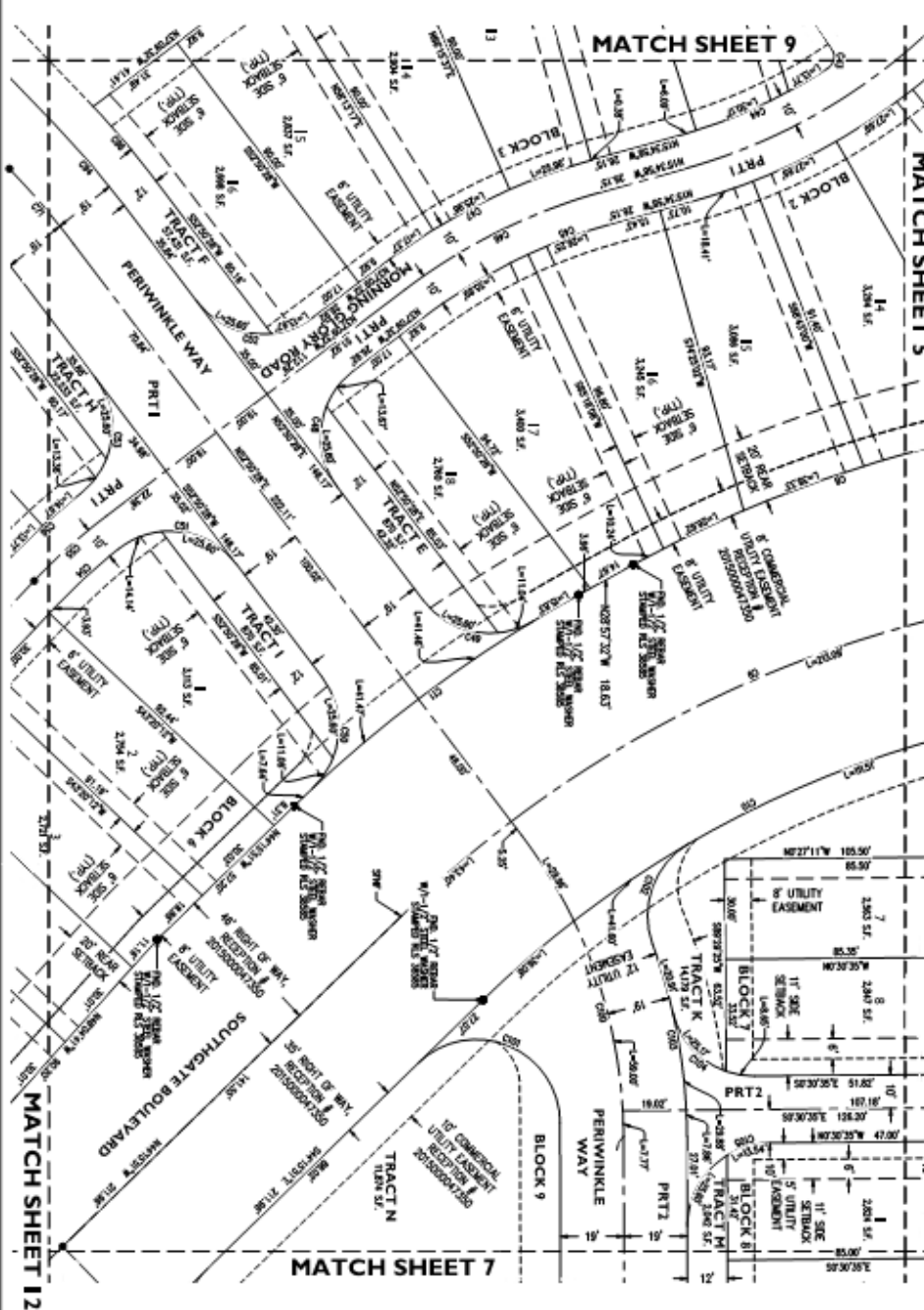
EPS GROUP
1120 N. Alma School Rd, Suite 120
Mesa, AZ 85201
T:480.203.2250 | F:480.203.2258
www.epsgroupinc.com



FINAL PLAT
VILLAGE AT SOUTHGATE BRIGHTON, FILING 2
AMENDING LOT 1, BLOCK 3 AND LOT 1, BLOCK 4
A SUBDIVISION OF A PORTION OF THE NORTHEAST QUARTER OF SECTION 1,
TOWNSHIP 2 SOUTH, RANGE 67 WEST OF THE 6TH P.M.,
CITY OF BRIGHTON, COUNTY OF ADAMS, STATE OF COLORADO



CURVE TABLE									
CURVE	LENGTH	RADIUS	DELTA	TANGENT	CHORD	CHORD ARC	AREA	PERIMETER	CHORD BEARING
C01	28.37	165.00	151.85°	18.37	28.37	485.9547'			N 89°59'47"W
C02	4.37	4.00	89°59'57"	4.00	5.72	487.4747'			N 89°59'47"W
C03	4.37	4.00	89°59'57"	4.00	5.72	487.4747'			N 89°59'47"W
C04	48.69	165.00	172.06°	35.17	48.67	647.9527'			N 89°59'47"W
C05	42.57	165.00	275.43°	31.44	46.77	528.2219'			N 89°59'47"W
C06	65.87	175.00	275.43°	33.34	65.87	528.2219'			N 89°59'47"W
C07	68.87	165.00	275.43°	35.25	68.87	528.2219'			N 89°59'47"W
C08	28.37	25.00	89°59'57"	25.00	28.37	282.9027'			N 89°59'47"W
C09	28.37	25.00	89°59'57"	25.00	28.37	282.9027'			N 89°59'47"W
C10	28.37	25.00	89°59'57"	25.00	28.37	282.9027'			N 89°59'47"W
C11	28.37	25.00	89°59'57"	25.00	28.37	282.9027'			N 89°59'47"W
C12	28.37	25.00	89°59'57"	25.00	28.37	282.9027'			N 89°59'47"W
C13	28.37	25.00	89°59'57"	25.00	28.37	282.9027'			N 89°59'47"W
C14	28.37	25.00	89°59'57"	25.00	28.37	282.9027'			N 89°59'47"W
C15	28.37	25.00	89°59'57"	25.00	28.37	282.9027'			N 89°59'47"W
C16	28.37	25.00	89°59'57"	25.00	28.37	282.9027'			N 89°59'47"W
C17	28.37	25.00	89°59'57"	25.00	28.37	282.9027'			N 89°59'47"W
C18	28.37	25.00	89°59'57"	25.00	28.37	282.9027'			N 89°59'47"W
C19	28.37	25.00	89°59'57"	25.00	28.37	282.9027'			N 89°59'47"W
C20	28.37	25.00	89°59'57"	25.00	28.37	282.9027'			N 89°59'47"W
C21	28.37	25.00	89°59'57"	25.00	28.37	282.9027'			N 89°59'47"W
C22	28.37	25.00	89°59'57"	25.00	28.37	282.9027'			N 89°59'47"W
C23	28.37	25.00	89°59'57"	25.00	28.37	282.9027'			N 89°59'47"W
C24	28.37	25.00	89°59'57"	25.00	28.37	282.9027'			N 89°59'47"W
C25	28.37	25.00	89°59'57"	25.00	28.37	282.9027'			N 89°59'47"W
C26	28.37	25.00	89°59'57"	25.00	28.37	282.9027'			N 89°59'47"W
C27	28.37	25.00	89°59'57"	25.00	28.37	282.9027'			N 89°59'47"W
C28	28.37	25.00	89°59'57"	25.00	28.37	282.9027'			N 89°59'47"W
C29	28.37	25.00	89°59'57"	25.00	28.37	282.9027'			N 89°59'47"W
C30	28.37	25.00	89°59'57"	25.00	28.37	282.9027'			N 89°59'47"W
C31	28.37	25.00	89°59'57"	25.00	28.37	282.9027'			N 89°59'47"W
C32	28.37	25.00	89°59'57"	25.00	28.37	282.9027'			N 89°59'47"W
C33	28.37	25.00	89°59'57"	25.00	28.37	282.9027'			N 89°59'47"W
C34	28.37	25.00	89°59'57"	25.00	28.37	282.9027'			N 89°59'47"W
C35	28.37	25.00	89°59'57"	25.00	28.37	282.9027'			N 89°59'47"W
C36	28.37	25.00	89°59'57"	25.00	28.37	282.9027'			N 89°59'47"W
C37	28.37	25.00	89°59'57"	25.00	28.37	282.9027'			N 89°59'47"W
C38	28.37	25.00	89°59'57"	25.00	28.37	282.9027'			N 89°59'47"W
C39	28.37	25.00	89°59'57"	25.00	28.37	282.9027'			N 89°59'47"W
C40	28.37	25.00	89°59'57"	25.00	28.37	282.9027'			N 89°59'47"W
C41	28.37	25.00	89°59'57"	25.00	28.37	282.9027'			N 89°59'47"W
C42	28.37	25.00	89°59'57"	25.00	28.37	282.9027'			N 89°59'47"W
C43	28.37	25.00	89°59'57"	25.00	28.37	282.9027'			N 89°59'47"W
C44	28.37	25.00	89°59'57"	25.00	28.37	282.9027'			N 89°59'47"W
C45	28.37	25.00	89°59'57"	25.00	28.37	282.9027'			N 89°59'47"W
C46	28.37	25.00	89°59'57"	25.00	28.37	282.9027'			N 89°59'47"W
C47	28.37	25.00	89°59'57"	25.00	28.37	282.9027'			N 89°59'47"W
C48	28.37	25.00	89°59'57"	25.00	28.37	282.9027'			N 89°59'47"W
C49	28.37	25.00	89°59'57"	25.00	28.37	282.9027'			N 89°59'47"W
C50	28.37	25.00	89°59'57"	25.00	28.37	282.9027'			N 89°59'47"W
C51	28.37	25.00	89°59'57"	25.00	28.37	282.9027'			N 89°59'47"W
C52	28.37	25.00	89°59'57"	25.00	28.37	282.9027'			N 89°59'47"W
C53	28.37	25.00	89°59'57"	25.00	28.37	282.9027'			N 89°59'47"W
C54	28.37	25.00	89°59'57"	25.00	28.37	282.9027'			N 89°59'47"W
C55	28.37	25.00	89°59'57"	25.00	28.37	282.9027'			N 89°59'47"W
C56	28.37	25.00	89°59'57"	25.00	28.37	282.9027'			N 89°59'47"W
C57	28.37	25.00	89°59'57"	25.00	28.37	282.9027'			N 89°59'47"W
C58	28.37	25.00	89°59'57"	25.00	28.37	282.9027'			N 89°59'47"W
C59	28.37	25.00	89°59'57"	25.00	28.37	282.9027'			N 89°59'47"W
C60	28.37	25.00	89°59'57"	25.00	28.37	282.9027'			N 89°59'47"W
C61	28.37	25.00	89°59'57"	25.00	28.37	282.9027'			N 89°59'47"W
C62	28.37	25.00	89°59'57"	25.00	28.37	282.9027'			N 89°59'47"W
C63	28.37	25.00	89°59'57"	25.00	28.37	282.9027'			N 89°59'47"W
C64	28.37	25.00	89°59'57"	25.00	28.37	282.9027'			N 89°59'47"W
C65	28.37	25.00	89°59'57"	25.00	28.37	282.9027'			N 89°59'47"W
C66	28.37	25.00	89°59'57"	25.00	28.37	282.9027'			N 89°59'47"W
C67	28.37	25.00	89°59'57"	25.00	28.37	282.9027'			N 89°59'47"W
C68	28.37	25.00	89°59'57"	25.00	28.37	282.9027'			N 89°59'47"W
C69	28.37	25.00	89°59'57"	25.00	28.37	282.9027'			N 89°59'47"W
C70	28.37	25.00	89°59'57"	25.00	28.37	282.9027'			N 89°59'47"W
C71	28.37	25.00	89°59'57"	25.00	28.37	282.9027'			N 89°59'47"W
C72	28.37	25.00	89°59'57"	25.00	28.37	282.9027'			N 89°59'47"W
C73	28.37	25.00	89°59'57"	25.00	28.37	282.9027'			N 89°59'47"W
C74	28.37	25.00	89°59'57"	25.00	28.37	282.9027'			N 89°59'47"W
C75	28.37	25.00	89°59'57"	25.00	28.37	282.9027'			N 89°59'47"W
C76	28.37	25.00	89°59'57"	25.00	28.37	282.9027'			N 89°59'47"W
C77	28.37	25.00	89°59'57"	25.00	28.37	282.9027'			N 89°59'47"W
C78	28.37	25.00	89°59'57"	25.00	28.37	282.9027'			N 89°59'47"W
C79	28.37	25.00	89°59'57"	25.00	28.37	282.9027'			N 89°59'47"W
C80	28.37	25.00	89°59'57"	25.00	28.37	282.9027'			N 89°59'47"W

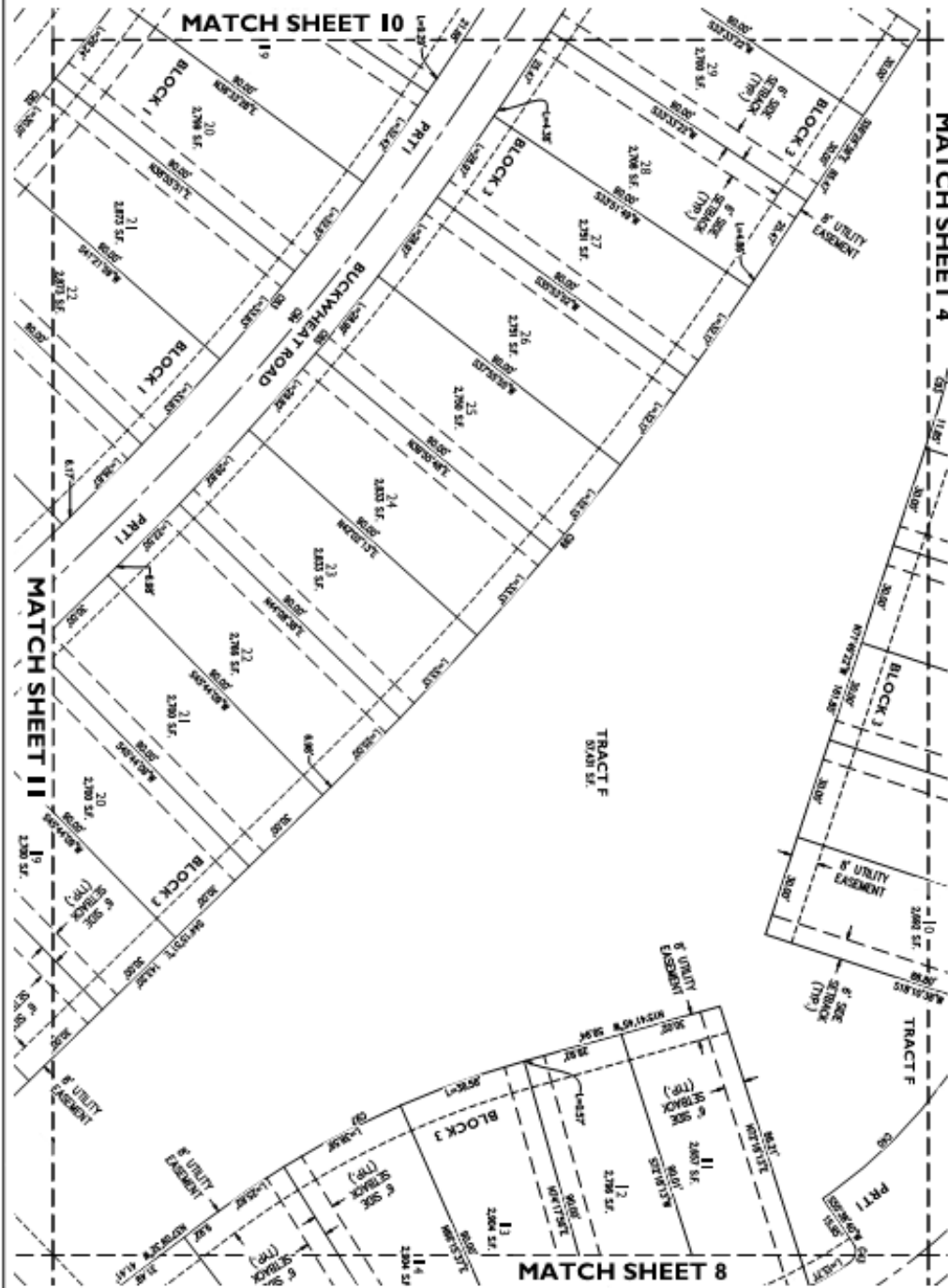


1" = 50'

FINAL PLAT

VILLAGE AT SOUTHGATE BRIGHTON, FILING 2
AMENDING LOT 1, BLOCK 3 AND LOT 1, BLOCK 4
A SUBDIVISION OF A PORTION OF THE NORTHEAST QUARTER OF SECTION 1,
TOWNSHIP 2 SOUTH, RANGE 67 WEST OF THE 6TH P.M.,
CITY OF BRIGHTON, COUNTY OF ADAMS, STATE OF COLORADO

KEY MAP
SCALE: 1" = 50'






FINAL PLAT

VILLAGE AT SOUTHGATE BRIGHTON, FILING 2

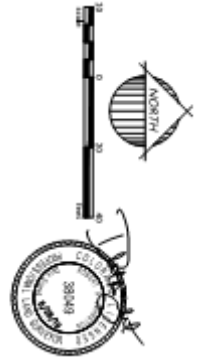
AMENDING LOT I, BLOCK 3 AND LOT I, BLOCK 4

A SUBDIVISION OF A PORTION OF THE NORTHEAST QUARTER OF SECTION 1,
TOWNSHIP 2 SOUTH, RANGE 67 WEST OF THE 6TH P.M.,
CITY OF BRIGHTON, COUNTY OF ADAMS, STATE OF COLORADO



KEY MAP
SCALE 1"=500'

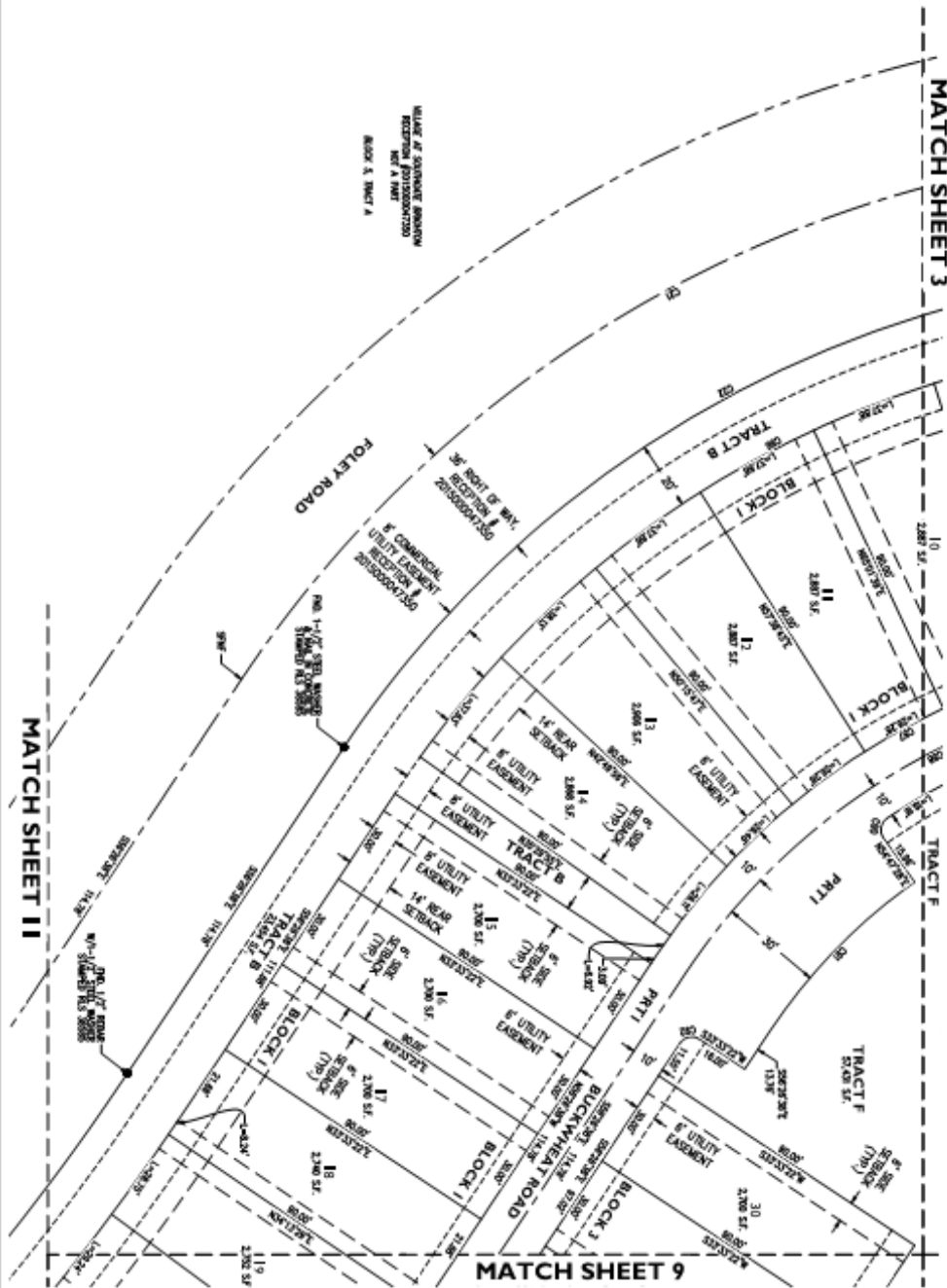
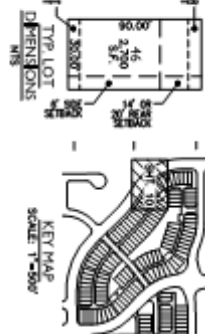
SECTION 1
TWP. LOT
DIMENSIONS

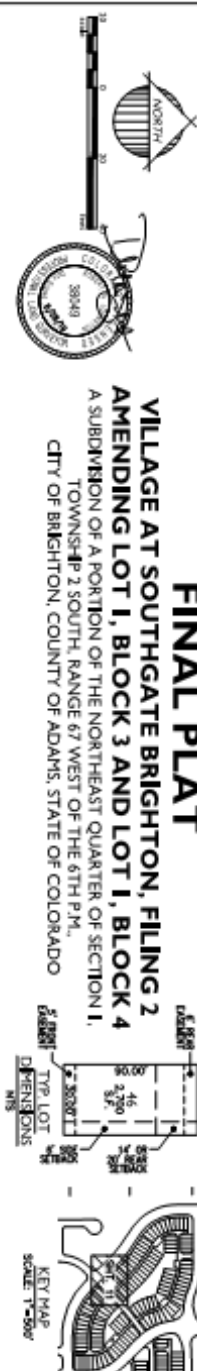
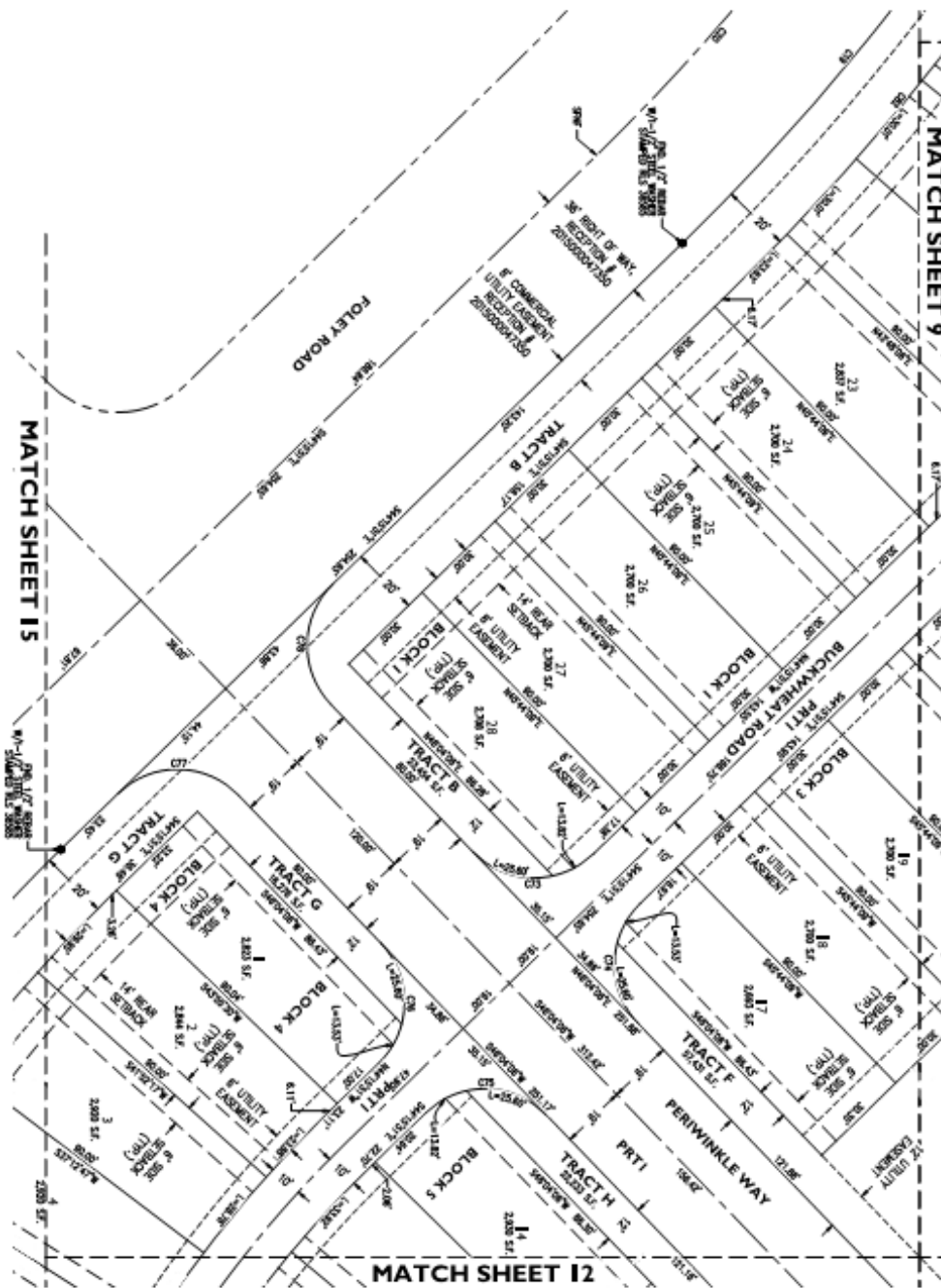


FINAL PLAT

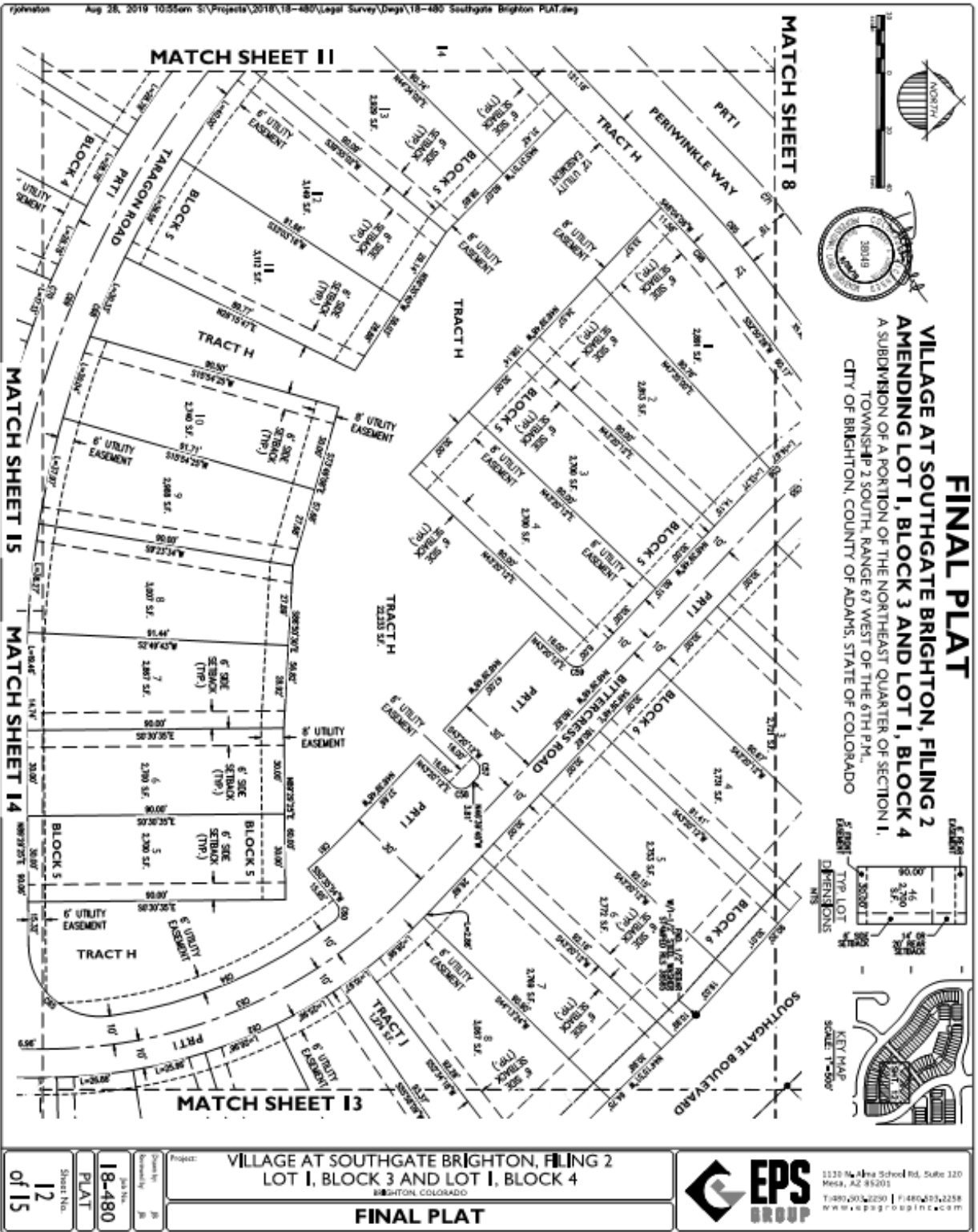
VILLAGE AT SOUTHGATE BRIGHTON, FILING 2 AMENDING LOT 1, BLOCK 3 AND LOT 1, BLOCK 4

A SUBDIVISION OF A PORTION OF THE NORTHEAST QUARTER OF SECTION 1,
TOWNSHIP 2 SOUTH, RANGE 67 WEST OF THE 6TH P.M.,
CITY OF BRIGHTON, COUNTY OF ADAMS, STATE OF COLORADO





FINAL PLAT
VILLAGE AT SOUTHGATE BRIGHTON, FILING 2
AMENDING LOT 1, BLOCK 3 AND LOT 1, BLOCK 4
 A SUBDIVISION OF A PORTION OF THE NORTHEAST QUARTER OF SECTION 1,
 TOWNSHIP 2 SOUTH, RANGE 67 WEST OF THE 6TH P.M.,
 CITY OF BRIGHTON, COUNTY OF ADAMS, STATE OF COLORADO



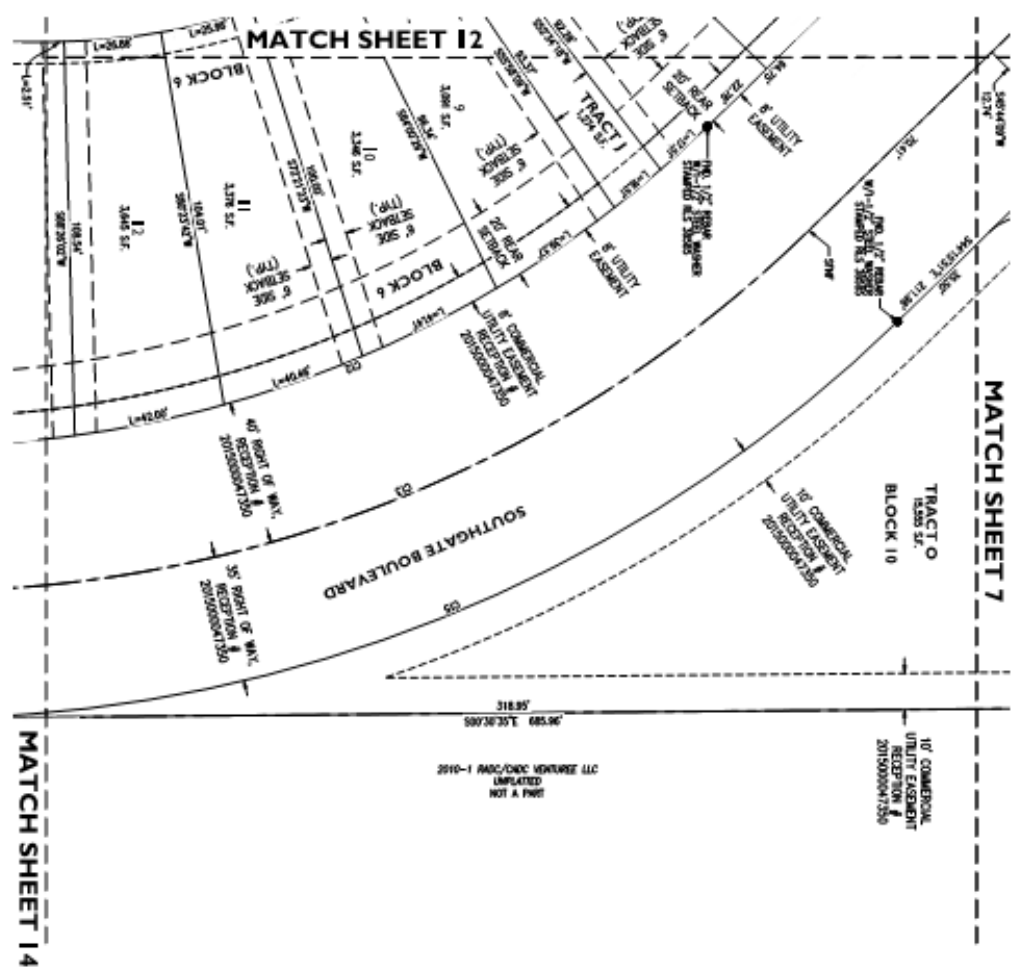
12
of 15

Project: **VILLAGE AT SOUTHGATE BRIGHTON, FILING 2**
LOT 1, BLOCK 3 AND LOT 1, BLOCK 4
 BRIGHTON, COLORADO

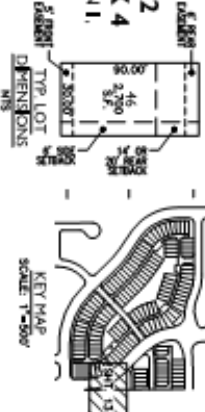
FINAL PLAT

EPS GROUP

1130 N. Olive School Rd, Suite 120
 Mesa, AZ 85201
 Tel: 480.902.2290 | Fax: 480.902.2258
 www.epsgroupinc.com

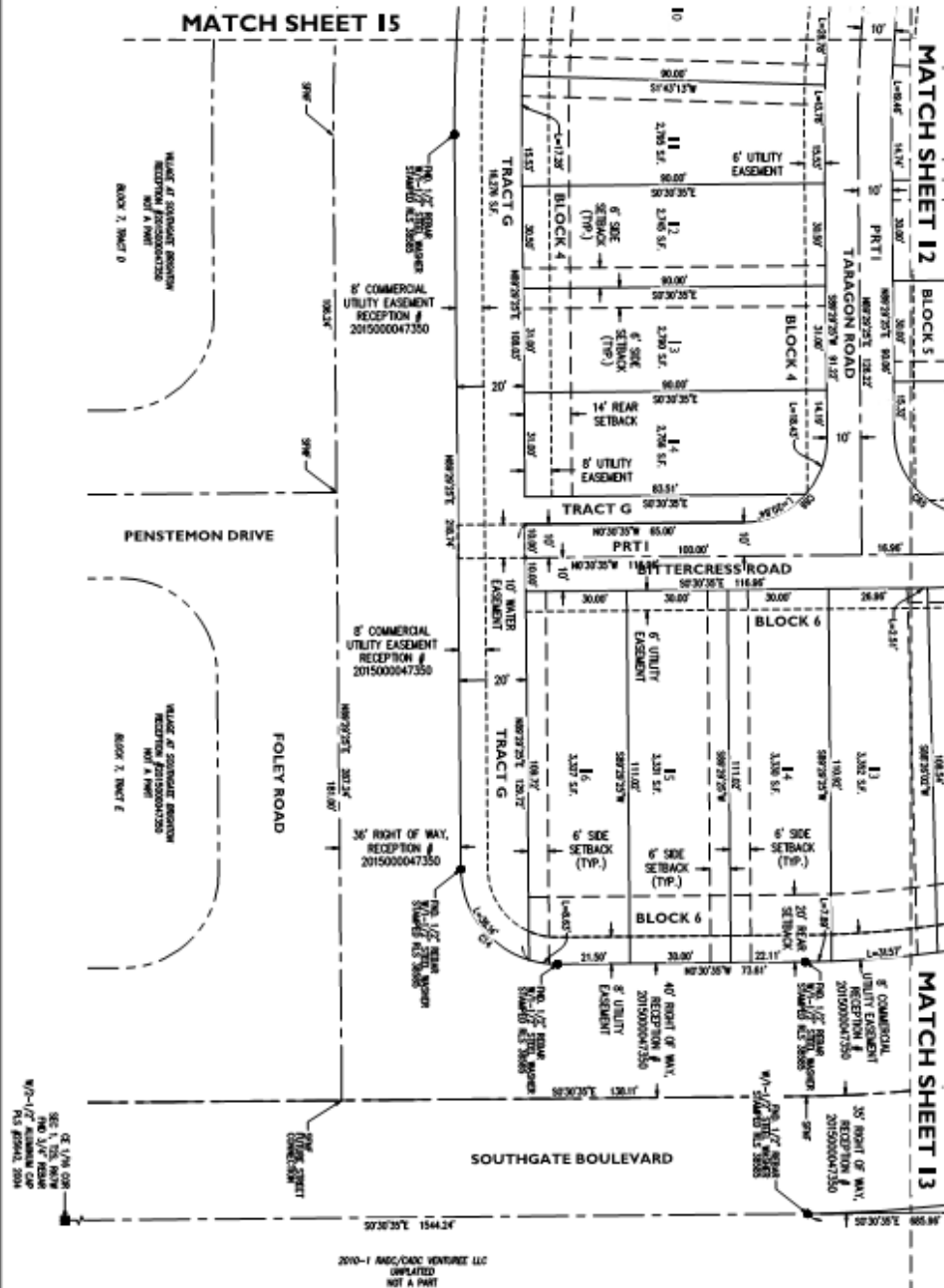
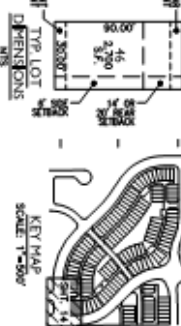


FINAL PLAT
VILLAGE AT SOUTHGATE BRIGHTON, FILING 2
AMENDING LOT 1, BLOCK 3 AND LOT 1, BLOCK 4
A SUBDIVISION OF A PORTION OF THE NORTHEAST QUARTER OF SECTION 1,
TOWNSHIP 2 SOUTH, RANGE 67 WEST OF THE 6TH P.M.,
CITY OF BRIGHTON, COUNTY OF ADAMS, STATE OF COLORADO



CHAIN	LENGTH	BEARS	DELTA	TANGENT	CURVE	CHORD	CHORD BEG.
C01	20.32'	20.00'	69.7237°	17.32'	20.00'	57.0102°	
C02	150.00'	150.00'	12.9147°	75.32'	148.80'	80.0714°	
C03	190.32'	190.00'	12.9147°	84.82'	188.80'	80.0714°	
C04	175.34'	180.00'	12.9147°	85.89'	171.02'	80.0714°	
C05	173.46'	180.00'	12.9147°	82.86'	173.14'	80.0714°	
C06	208.56'	200.00'	54.7120°	193.14'	208.28'	52.7210°	
C07	200.32'	200.00'	54.7120°	193.00'	193.28'	52.7210°	
C08	198.44'	190.00'	59.1403°	193.86'	182.80'	52.7210°	
C09	84.20'	180.00'	20.1414°	42.80'	83.50'	52.0447°	
C10	8.27'	4.00'	81.7824°	4.00'	5.72'	179.2410°	
C11	68.70'	160.00'	21.1407°	20.74'	68.42'	54.0447°	
C12	4.20'	4.00'	90.0000°	4.00'	5.66'	117.2910°	
C13	14.17'	70.00'	90.0000°	7.27'	14.50'	81.7824°	
C14	31.80'	280.00'	6.9422°	15.82'	31.76'	54.8217°	
C15	27.14'	20.00'	6.9422°	13.87'	27.29'	54.8217°	
C16	28.20'	20.00'	6.9422°	13.84'	28.24'	54.8217°	
C17	102.56'	270.00'	21.2425°	52.46'	102.80'	52.7210°	
C18	16.46'	180.00'	6.9422°	8.87'	16.80'	54.8217°	
C19	162.80'	180.00'	12.9147°	84.86'	162.20'	80.0714°	
C20	98.72'	150.00'	36.7936°	56.12'	95.86'	57.1836°	
C21	58.46'	20.00'	124.037°	58.87'	46.02'	122.4517°	
C22	54.86'	20.00'	79.5736°	20.86'	52.12'	57.0930°	
C23	58.86'	180.00'	92.5706°	20.85'	58.26'	57.0930°	
C24	22.82'	20.00'	77.2015°	20.87'	21.20'	83.0741°	
C25	26.14'	20.00'	89.4200°	24.87'	25.26'	54.8217°	
C26	26.14'	20.00'	89.4200°	24.87'	25.26'	54.8217°	
C27	26.46'	20.00'	89.4200°	25.52'	25.86'	54.8217°	
C28	26.14'	20.00'	89.4200°	24.87'	25.26'	54.8217°	
C29	26.46'	20.00'	89.4200°	25.52'	25.86'	54.8217°	
C30	26.46'	20.00'	89.4200°	25.52'	25.86'	54.8217°	

**VILLAGE AT SOUTHGATE BRIGHTON, FILING 2
AMENDING LOT 1, BLOCK 3 AND LOT 1, BLOCK 4**
A SUBDIVISION OF A PORTION OF THE NORTHEAST QUARTER OF SECTION 1,
TOWNSHIP 2 SOUTH, RANGE 67 WEST OF THE 6TH P.M.,
CITY OF BRIGHTON, COUNTY OF ADAMS, STATE OF COLORADO



2010-1 RADC/CADC VENTURE LLC
UNPLATED
NOT A PART

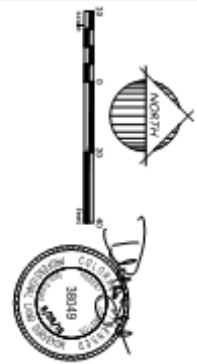
Job No. **18-480**
 Drawn by **PLAT**
 Sheet No. **14**
 of **15**

Project: **VILLAGE AT SOUTHGATE BRIGHTON, FILING 2**
LOT 1, BLOCK 3 AND LOT 1, BLOCK 4
 BRIGHTON, COLORADO

FINAL PLAT



11110 N. Alma School Rd., Suite 120
Mesa, AZ 85201
T: 480.903.2250 | F: 480.903.2258
www.epagroupinc.com



FINAL PLAT

VILLAGE AT SOUTHGATE BRIGHTON, FILING 2

AMENDING LOT 1, BLOCK 3 AND LOT 1, BLOCK 4

A SUBDIVISION OF A PORTION OF THE NORTHEAST QUARTER OF SECTION 1,
TOWNSHIP 2 SOUTH, RANGE 67 WEST OF THE 6TH P.M.,
CITY OF BRIGHTON, COUNTY OF ADAMS, STATE OF COLORADO

