



BASELINE WATER LINE CONNECTION AND NORTH TANK DRAINAGE IMPROVEMENTS

Presenting: Michael Woodruff, Director of Infrastructure
Project Manager: Matt Amidei, Staff Engineer

STRATEGIC PLAN



Supportive and Sustainable Infrastructure

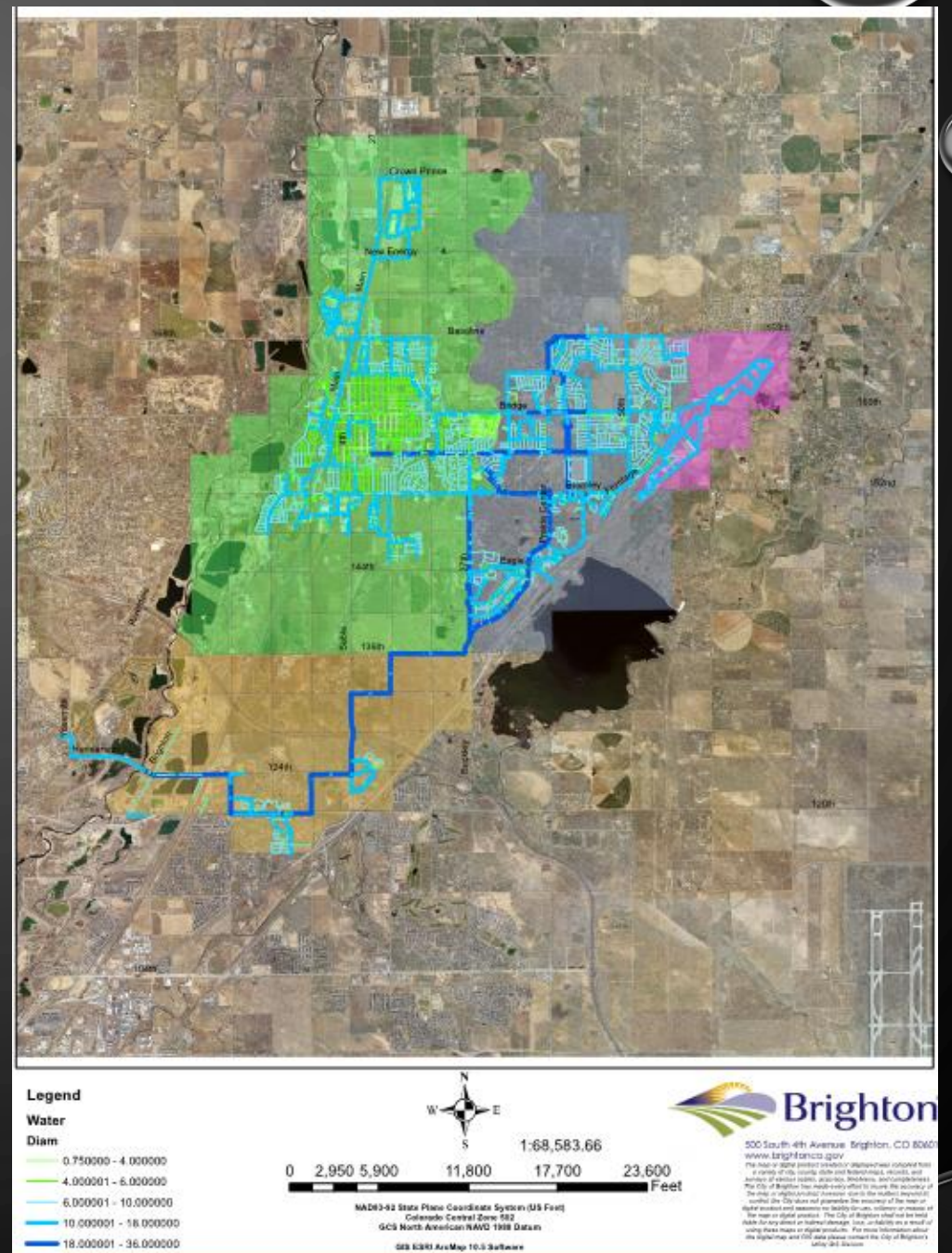


INTRODUCTION

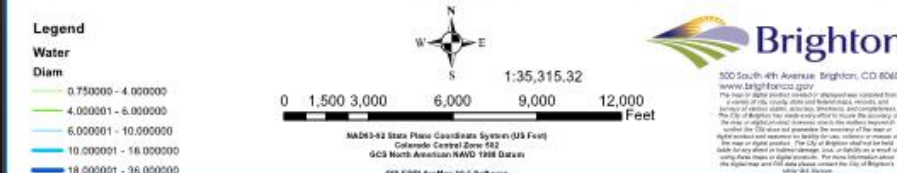
- PROJECT BACKGROUND
- PROJECT OBJECTIVES
- PROJECT DETAILS
- BID PROCESS AND RESULTS
- FINAL RECOMMENDATION

PROJECT BACKGROUND

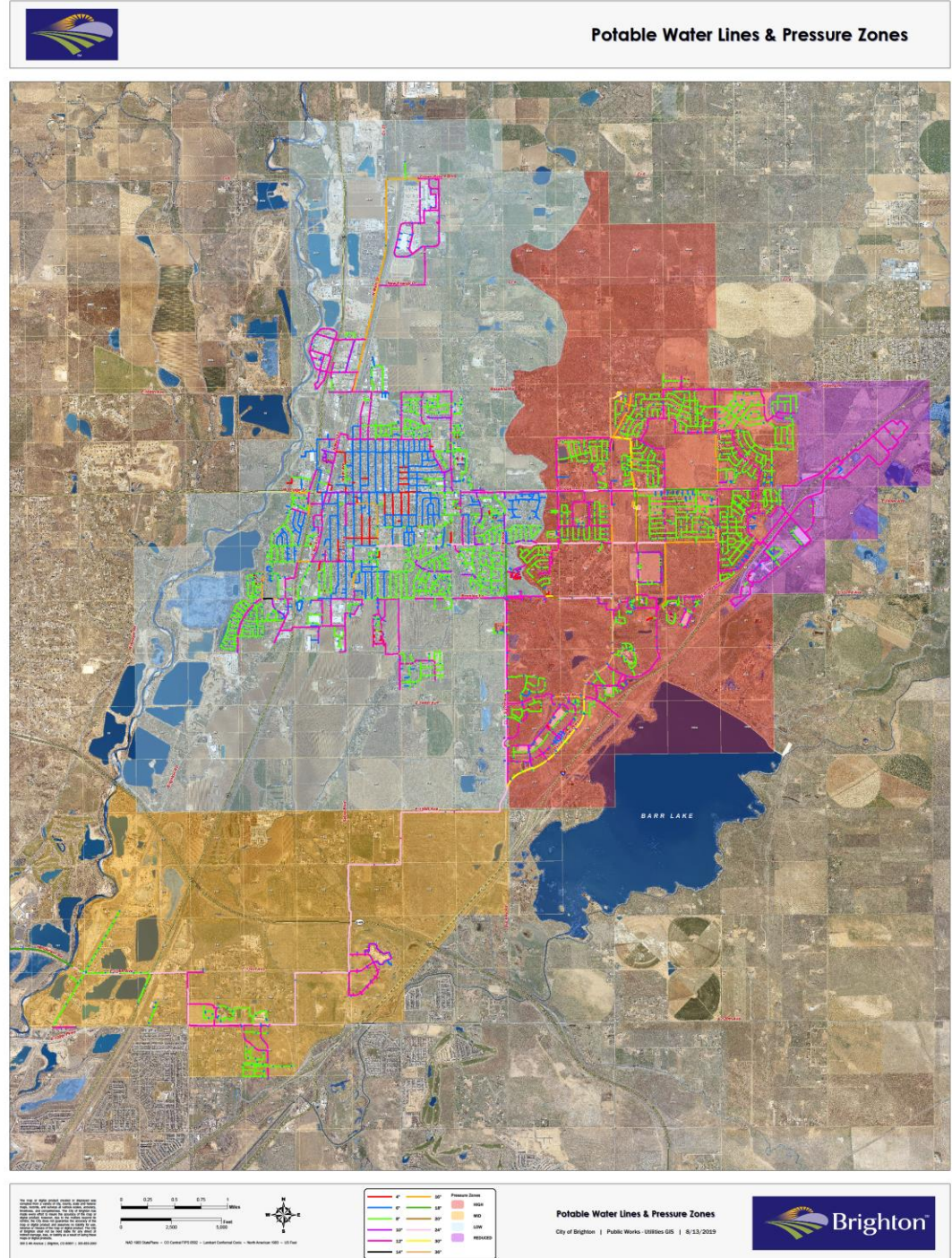
- 4 Pressure Zones
 - Low (West of 27th)
 - Mid (South of 136th)
 - High (27th to Speer Canal)
 - Reduced (East of Speer Canal)



- [illegible]



-
- Potable Water Lines & Pressure Zones**
- This map displays the potable water infrastructure for the City of Brighton, Colorado. It shows a network of water lines and the corresponding pressure zones across the city's service area. The map is overlaid on an aerial photograph, providing a clear view of the urban layout and surrounding areas.
- Legend:**
- Water Lines:**
 - Red: 4" - 36"
 - Orange: 4" - 36"
 - Yellow: 4" - 36"
 - Green: 4" - 36"
 - Blue: 4" - 36"
 - Purple: 4" - 36"
 - Pressure Zones:**
 - Red: HIGH
 - Orange: MED
 - Yellow: LOW
 - Green: PERIOD
- Scale:** 0, 0.25, 0.5, 0.75, 1 Miles. 0, 2,000, 5,000 Feet.
- North Arrow:** Indicated by a compass rose pointing North.
- Map Title:** Potable Water Lines & Pressure Zones
- City of Brighton | Public Works - Utilities GIS | 8/13/2019**
- Brighton**



PROJECT BACKGROUND

- This project will construct approximately 8,300 feet of 24in. water line to complete a connection on Baseline Rd (168th Ave.) between 19th St. and Tower Rd.
- 4,500 feet of storm drain will also be installed to facilitate drainage from the North Tank

PROJECT LOCATION



PROJECT OBJECTIVES

- Benefits of the 24in Water line on Baseline
 - Provide better Transmission Line Redundancy into the Low Zone
 - Reduce water pressure fluctuations due to fire hydrant operations
 - Reduce the number waterline breaks due to water hammer
- Benefits of North Tank Drain Line
 - Safely allow operations to drain the North Tank to the Brighton Lateral, which will reduce the possibility of flooding to the neighborhood to the North.

PROJECT DETAILS - TRENCHING

- The water line installation will use the open trench method.
- This helps ensures existing conditions are known.
- Traffic Control will be critical on Baseline.



BID PROCESS AND RESULTS

- Bids were solicited through a formal bid process. The bid opening was 12/4 with six contractors bidding on services.
- Bids ranged from \$3,382,427 to \$5,050,802
- Redline Pipeline was selected based on providing the lowest unit cost of the bidding contractors.
- The final amount of the proposed project is \$3,382,427.00.

FINAL RECOMMENDATION

Staff believes that selecting Redline Pipeline for the Baseline Waterline Connection Project would accomplish the following:

- Provide higher quality water service to residents in the area.
- Provide water redundancy to the area.

The background is a dark gray gradient. It features several concentric circles centered in the upper half of the image, creating a ripple effect. Scattered around the edges are numerous water droplets of various sizes, some with highlights, giving a sense of depth and texture.

QUESTIONS?