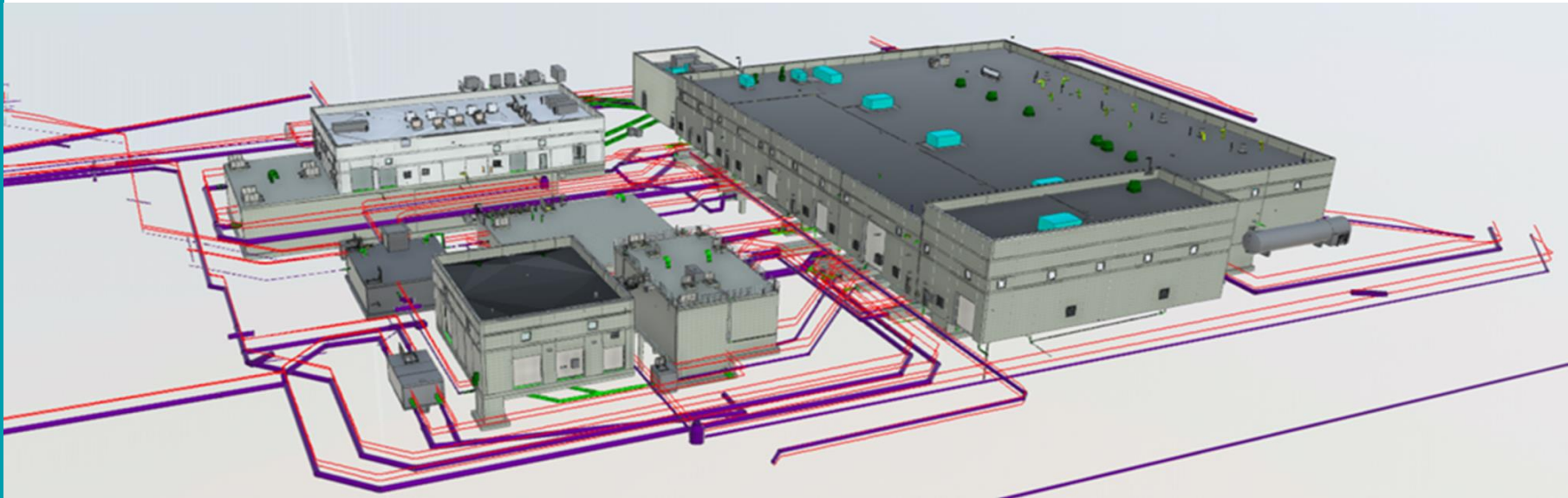




BrightonSM

WTP Engineering Services During Construction (ESDC)



City Staff Representatives: **Scott Olsen**, Interim Director of Utilities



Presentation Contents

- Engineering Services During Construction
- Procurement Summary and Staff Recommendation
- Questions?



Engineering Services During Construction (ESDC) Contract

- Submittal Reviews and submittal tracking- Up to 950 submittals/resubmittals
- Requests for Information (RFIs) and Clarifications- Up to 400 RFIs/clarifications
- Permitting Assistance
- Proposed design changes
- Meetings and Coordination
- Design Team site visits
- Record Drawings
- Operations Manuals
- Plant Start-up Support

****ESDC costs are included in the total project cost for budgeting purposes. Garney Construction will begin preparing the Guaranteed Maximum Construction Cost (GMP) after receiving final plan set****



BrightonSM

Procurement Summary

PROCUREMENT METHOD:

Waive formal solicitation procedure for acquisition greater than \$100,000.00 if determined by City Council to be in the best interest of the City.

ACQUISITION DETAILS:

PROPOSAL: \$4,099,595.00

STAFF RECOMMENDATION:

Accept Proposal submitted by Brown and Caldwell and waive the formal solicitation procedure for the acquisition.





Justification for Waiver of Formal Solicitation

- Brown and Caldwell is the Engineer of Record for the WTP Project
- Engineer of Record assumes all liability for the design of the plant
- Uncommon in the industry for another firm to accept liability for the design, and if they did, it would likely come at a high cost and cause project delays
- Another professional engineering firm cannot provide clarification on design intent, respond to RFIs, approve submittals, etc.



Questions?

