



Brookfield Reimbursement Agreement- Venture Park Non-Potable Main

City Council – December 17, 2024

City Staff Representative:

Scott Olsen, Director of Utilities

Department:

Utilities



Presentation Contents

- Project Overview
- Project Location
- Agreement Overview
- Staff Recommendation
- Questions



Project Overview

- Chikuma non-potable well currently irrigates parks, median landscaping and open spaces in the Bromley Bark and Brighton Crossings subdivisions.
- City wishes to expand the non-potable water service to Donelson Park, Venture Park and Pierson Park. Capacity in the system has been reserved for these parks.
- Installation of the non-potable water main north of Bridge Street has been completed in various phases over many years.

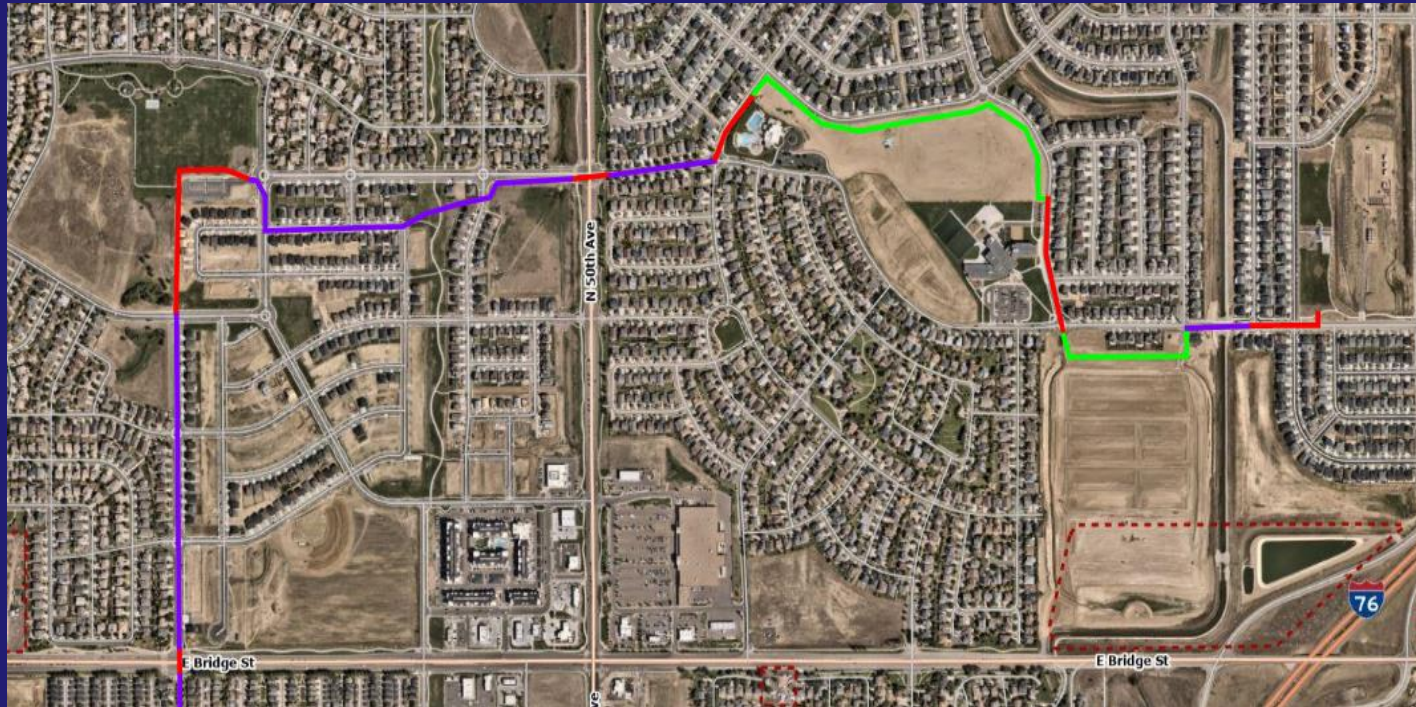


Project Overview

- City wishes to have Brookfield Residential install a missing portion of the non-potable water main through Venture Park during construction of the park that is on-going to avoid disruption of the park in the future. The engineer's cost estimate for this portion of the line is approximately \$314,000.
- There are clear cost savings by constructing this project as part of the larger Venture Park construction project such as mobilization costs.
- Construction of the “missing links” of the system are budgeted in the 15-year CIP for the Utilities Department.



Project Location





Agreement Overview

- Brookfield has already designed the non-potable main through Venture Park.
- Brookfield will construct the portion of the main and appurtenances through Venture Park and submit documentation to support the actual construction costs.
- The City will reimburse Brookfield the actual construction costs and soft costs.
- The City previously entered into a reimbursement agreement for construction of the portion of the main through Brighton Crossing F7.



Staff Recommendation

- City staff recommend approval of the resolution as drafted.
- This will allow for the construction of the non-potable water main through Venture Park to continue toward achieving non-potable water service for parks and open spaces in the northeast portion of Brighton.



Questions

