



South Outfall Phase II Culverts: Construction Services

City Council – April 2, 2024

City Staff Representatives: **Scott Olsen, CFM, Director of Utilities**
Anna Sparks, PE, CFM, Utilities Engineering Manager

BrightonSM

Presentation Contents

- Project Overview
- Project Location
- Procurement Summary and Staff Recommendation
- Options for City Council
- Questions?



Project Overview

- South Outfall is a master planned drainageway that carries runoff to the South Platte River
- Outfall has been designed and constructed in various phases over many decades. The latest portion to be designed/constructed is between approximately S. 4th Avenue and S. 27th Avenue.
- There are several roadway crossings in this portion of the outfall, including S. 19th Avenue, Chambers Road and S. 4th Avenue. These culvert crossings were planned to be constructed in two phases as development occurred in the drainage basin.

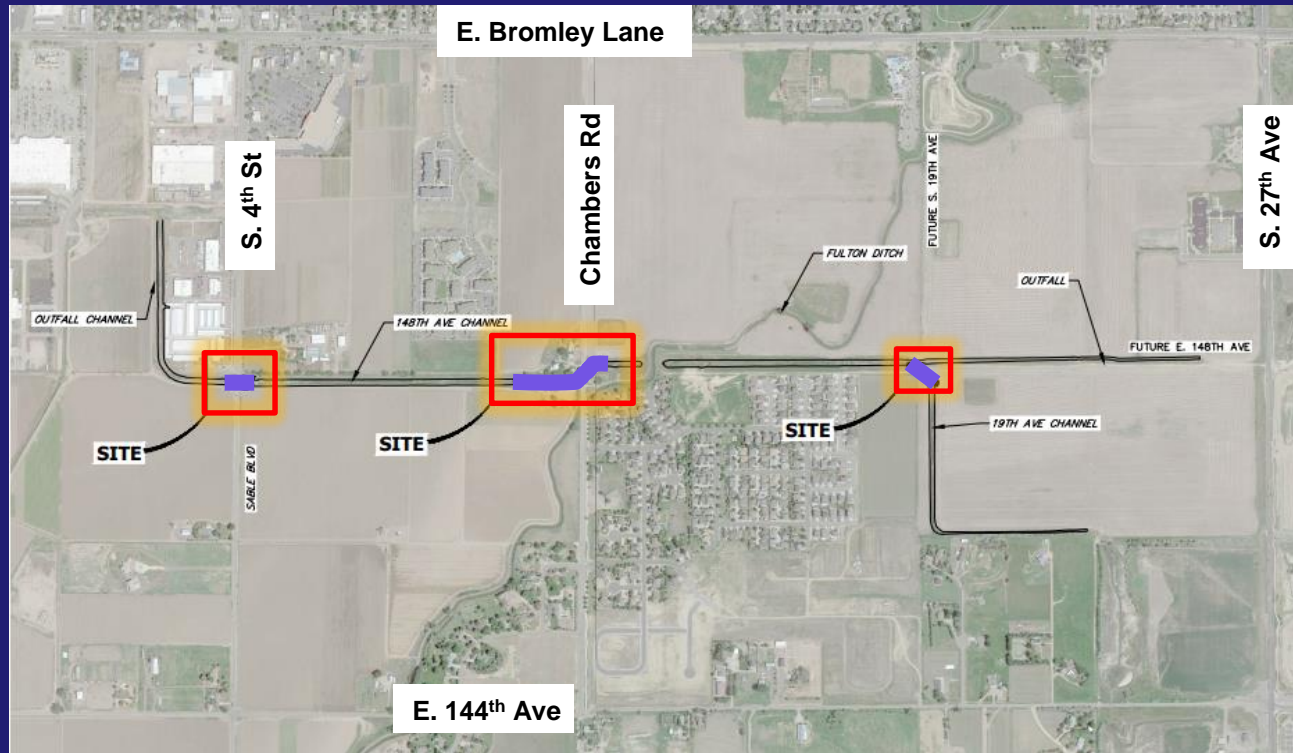


Project Overview (Cont'd)

- The first phase was constructed in 2012.
- The second phase was designed in 2023. Development in the drainage basin has reached a level that the adjacent, parallel culverts are required to convey proper flow. Sediment accumulation will also be removed from the outfall.
- At the end of the project, the existing and proposed culverts will be able to accommodate the future planned cross section of S. 4th Avenue (Sable Blvd.).
- Construction services have been formally solicited and the results are presented this evening.



Project Location





Procurement Summary

PROCUREMENT METHOD:

Formal Solicitation, advertised via BidNet, resulting in three (3) responses.

BIDS RECEIVED:

Bid 1: \$4,782,813.00

Bid 2: \$2,966,293.60

Bid 3: \$3,367,294.00



STAFF RECOMMENDATION:

Accept Bid 2, submitted by Duran Excavating, Inc as this Bid has been deemed the lowest most responsive and responsible of those received.

BrightonSM

Options for City Council

- Approve Resolution as presented
- Approve a modified Resolution
- Deny Resolution as presented



Questions

