



# Beebe Draw MDP and FHAD

---

City Staff Representatives:

Marc Johns: Director of Utilities

Scott Olsen: Assistant Director of Utilities



## Presentation Contents

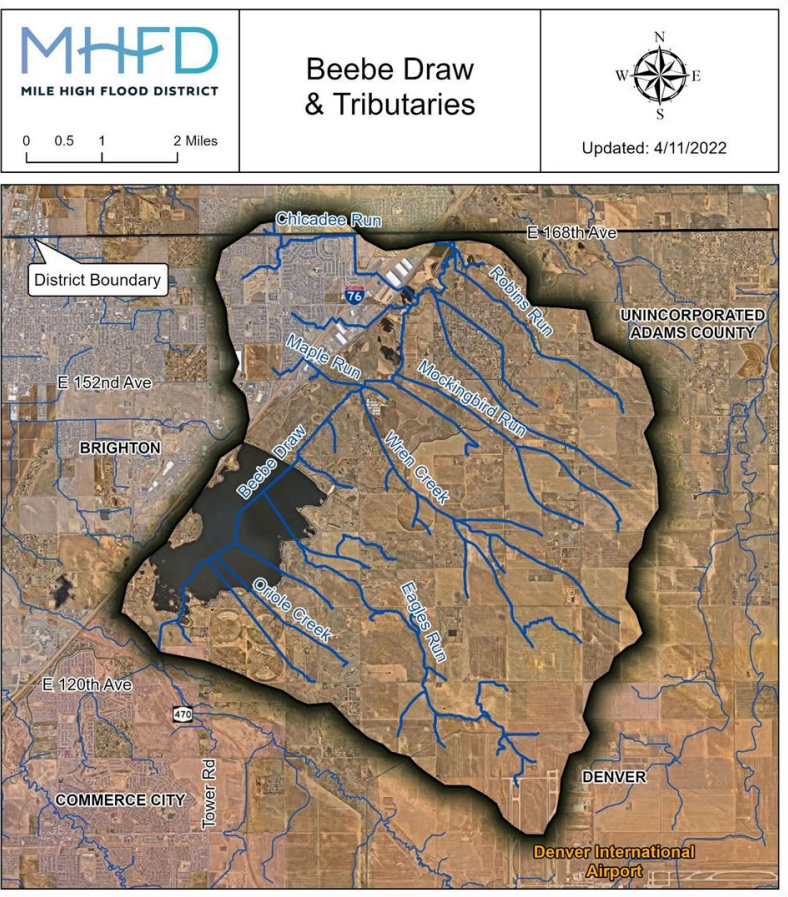
- ❑ Project Overview
- ❑ Study Area
- ❑ Staff Recommendation
- ❑ Options for Council Consideration
- ❑ Questions and Discussion?



## Project Overview

- ❑ Major Drainageway Plan and Flood Hazard Area Delineation
- ❑ Study will analyze the hydrologic and hydraulic characteristics of the drainage basin
- ❑ Study will propose alternatives and provide conceptual design of improvements to the drainageway
- ❑ Study will delineate new regulatory floodplain boundary for the drainageway based on the hydrologic and hydraulic analysis

# Study Area





## Staff Recommendation

City staff recommends the Resolution be adopted as presented to provide the City's financial contribution to the regional master planning project.



Brighton<sup>SM</sup>

## Options for Council Consideration

- Adopt the Resolution as presented
- Reject the Resolution as presented
- Request that modifications be made to the Resolution