



BrightonSM

Acoustic Assessment of Sewer Pipe & Manhole Inventory Inspections

City Staff Representatives:

Marc Johns, Interim Director of Utilities
Cody Henry, Maintenance Supervisor

Strategic Focus



STRATEGIC FOCUS AREA
Financially Responsible



STRATEGIC FOCUS AREA
*Supportive, Sustainable
Infrastructure*

Overview

- Project Background
- Project Details
- Staff Recommendations
- Council Options



Project Background

- Transmissive acoustic assessments enable wastewater collection system managers to transition from a rotational approach of maintenance to a condition-based approach.
- The rapid assessment of the sewer pipes 6" to 12" will diagnose flow capacity and flow conditions.

BrightonSM

Project Background Cont.

- Each pipe segment will be given a score from 0 to 10.

BLOCKED = 0

POOR = 1-3

FAIR = 4-6

GOOD = 7-10

- Once all data is collected, the data will be uploaded into maps and dashboards to easily display flow condition of all assessed pipes in our collection system.

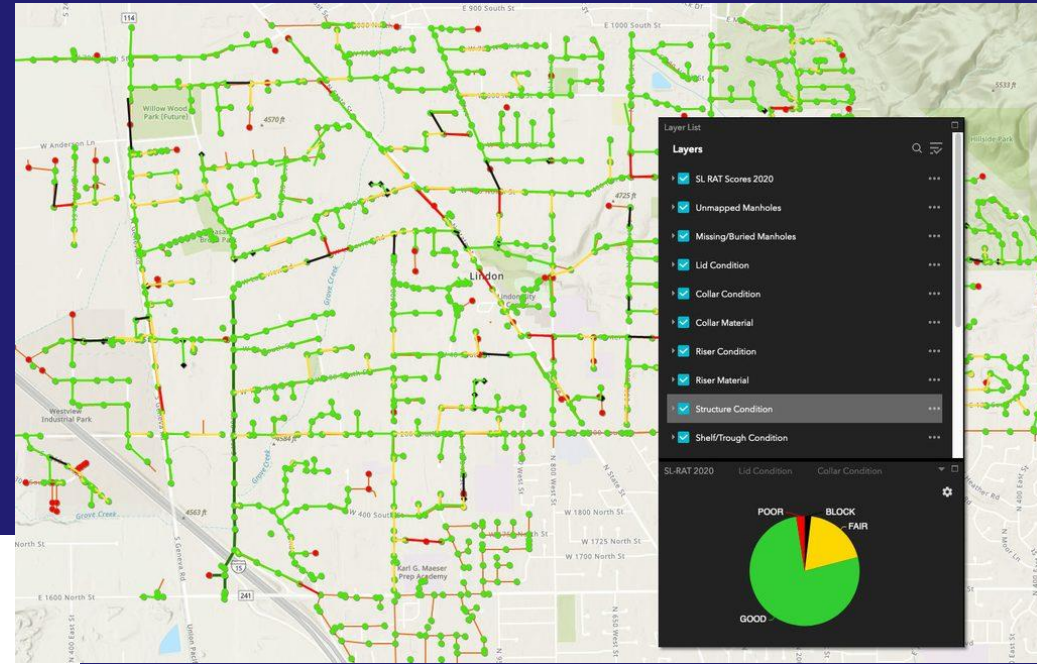
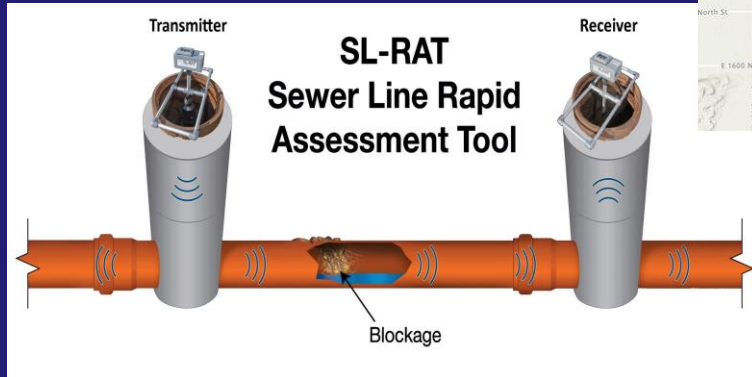


Project Details

- 701,958 Feet of sewer pipe to be assessed. Includes all 6" to 12" pipe in our collection system.
- 2,950 manholes will be assessed in the system. They will be prioritized based on manhole condition and incorporated into the assessment data.



Project Details Cont.



<https://youtu.be/-xpVZQP4hEo>



BrightonSM

Procurement Summary

PROCUREMENT METHOD:

Formal Solicitation, advertised via BidNet, resulting in three (3) responses.

PROPOSAL RECEIVED:

Proposal 1: \$164,332.86

Proposal 2: \$223,038.90

Proposal 3: \$280,775.00



STAFF RECOMMENDATION:

Accept Proposal 1 submitted by RH Borden and Company, as this Proposal has been deemed the lowest, most responsive and responsible vendor. The vendor's proposal exemplifies their understanding of the City's intended approach to improve efficiency and effectiveness of wastewater line inspection.



Council Options at a future Regular Meeting:

- Approve
- Deny
- Require additional bids to be obtained

Input?