

	Legal Description Riverdale to Sharp Lateral CUP Permit				
	DOC. NO.:		REV.:	3	



LEGAL DESCRIPTION
RIVERDALE TO SHARP LATERAL CUP PERMIT

3	6/7/2017	JRW	Issued for Permit		
2	5/31/2017	JRW	Issued for Permit		
1	5/2/2017	JRW	Issued for Permit		
A	5/2/2017	JRW	Issued for Review		
REV.	DATE	BY	DESCRIPTION	CHKD	APPVD
			Discovery Midstream Partners		

	Legal Description				
	Riverdale to Sharp Lateral CUP Permit				
	DOC. NO.:		REV.:	3	

1 PURPOSE

The purpose of this document is to convey the legal description of the pipeline Right-of-Way (ROW) to fulfill the requirements of the Conditional Use Permit set forth by the city of Brighton, Colorado.

2 GENERAL DESCRIPTION OF ROUTE

The Riverdale to Sharp Lateral pipelines convey crude oil and natural gas products from the Riverdale well pad facility to the Sharp well pad facility. The crude oil is transferred via an NPS 8 pipeline and the natural gas products are transferred via an NPS 10 pipeline.

The Riverdale to Sharp Lateral pipeline starts at the Sharp facility in the southwest quarter corner of Section 24, Township 1S, Range 67W. From the facility it crosses E 136th Ave. into the Brighton Corporate limits before turning due east to parallel E. 136th out of Brighton Corporate limits again. The line follows a general eastward direction until it reaches the E-470 toll road at which point it parallels the toll road back into Brighton Corporate limits until it again leaves the Brighton Corporate limits. This is general route is shown in the map below in Figure 1.

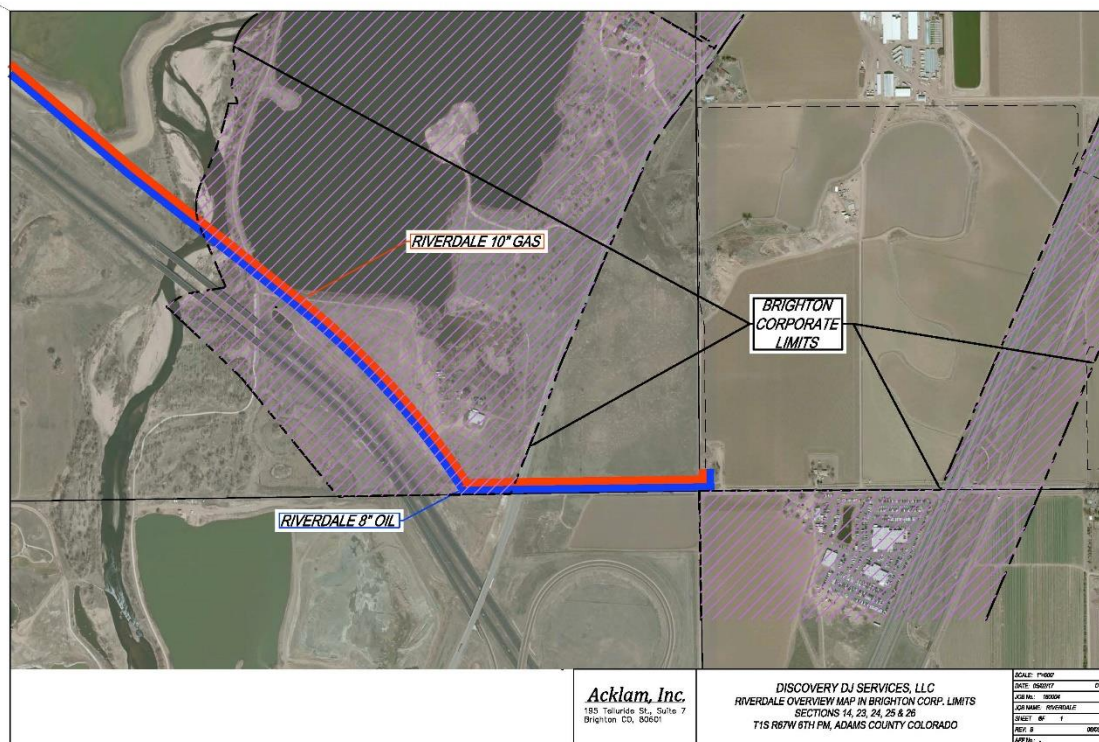


Figure 1: Overview Map

3 LEGAL DESCRIPTION

The sections of the legal description below that are **bolded** indicate the segments of the ROW that are within the City Limits of Brighton.

	Legal Description Riverdale to Sharp Lateral CUP Permit				
	DOC. NO.:		REV.:	3	

CENTERLINE DESCRIPTION FOR A PROPOSED PIPELINE IN THE CITY OF BRIGHTON, LOCATED IN THE FOLLOWING SECTIONS; SECTION 23 AND 24, TOWNSHIP 1S, RANGE 67W, CITY OF BRIGHTON, COUNTY OF ADAMS, STATE OF COLORADO DESCRIBED AS FOLLOWS.

BEGINNING AT THE WESTERN LINE OF THE NORTH WEST QUARTER CORNER OF THE SOUTHWEST CORNER OF SECTION 14, TOWNSHIP 1S, RANGE 67W FROM WHICH THE ROW BEARS SOUTH 00° 18' 28.0" E A DISTANCE OF 90.1450 FEET

THENCE ALONG A TANGENT LINE SOUTH 88° 56' 52.8" WEST A DISTANCE OF 67.67 FEET

THENCE ALONG A TANGENT LINE SOUTH 00° 17' 26.4" EAST A DISTANCE OF 1326.9044 FEET;

THENCE ALONG A TANGENT LINE SOUTH 00° 21' 14.3" EAST A DISTANCE OF 1225.2557 FEET;

THENCE ALONG A TANGENT LINE SOUTH 24° 03' 24.8" WEST A DISTANCE OF 273.2544 FEET;

THENCE ALONG A TANGENT LINE SOUTH 14° 03' 24.8" WEST A DISTANCE OF 31.1354 FEET;

THENCE ALONG A TANGENT LINE SOUTH 24° 03' 24.8" WEST A DISTANCE OF 144.0960 FEET;

THENCE ALONG A TANGENT LINE SOUTH 69° 03' 24.8" WEST A DISTANCE OF 97.7147 FEET;

THENCE ALONG A NON-TANGENTIAL LINE SOUTH 24° 49' 10.8" WEST A DISTANCE OF 184.8154 FEET;

SAID CURVE TURNING TO THE RIGHT THROUGH AN ANGLE OF 15° 15' 27.0", HAVING A RADIUS OF 3545.4094 FEET, AND WHOSE LONG CHORD BEARS SOUTH 57° 22' 07.3" EAST FOR A DISTANCE OF 941.3327 FEET TO A POINT OF INTERSECTION WITH A NON-TANGENTIAL LINE.

THENCE ALONG A TANGENT LINE SOUTH 49° 46' 40.8" EAST A DISTANCE OF 333.2818 FEET;

THENCE ALONG A TANGENT LINE SOUTH 49° 42' 51.6" EAST A DISTANCE OF 266.3799 FEET;

THENCE ALONG A TANGENT LINE SOUTH 49° 45' 17.4" E A DISTANCE OF 574.1889 FEET;

THENCE ALONG A TANGENT LINE SOUTH 52° 00' 40.7" EAST A DISTANCE OF 806.5678 FEET;

	Legal Description				
	Riverdale to Sharp Lateral CUP Permit				
	DOC. NO.:		REV.:	3	

THENCE ALONG A TANGENT LINE SOUTH 52° 00' 40.7" EAST A DISTANCE OF 155.3932 FEET;

THENCE ALONG A NON-TANGENTIAL LINE SOUTH 51° 42' 54.0" EAST A DISTANCE OF 516.8749 FEET;

SAID CURVE TURNING TO THE RIGHT THROUGH AN ANGLE OF 14° 45' 50.0", HAVING A RADIUS OF 5949.6362 FEET, AND WHOSE LONG CHORD BEARS SOUTH 43° 08' 12.2" EAST FOR A DISTANCE OF 1528.8554 FEET TO A POINT OF INTERSECTION WITH A NON-TANGENTIAL LINE.

THENCE ALONG A TANGENT LINE NORTH 89° 07' 50.9" EAST A DISTANCE OF 1754.9018 FEET;

THENCE ALONG A TANGENT LINE NORTH 00° 31' 54.1" WEST A DISTANCE OF 47.9237 FEET;

THENCE, NORTH 89° 28' 05.9" EAST FOR A DISTANCE OF 45.0000 FEET.

4 TOTAL ROW LENGTH WITHIN BRIGHTON CITY LIMITS

The portion of the pipeline ROW along E-470 the total ROW length within Brighton city limits is approximately 2,011 feet in length