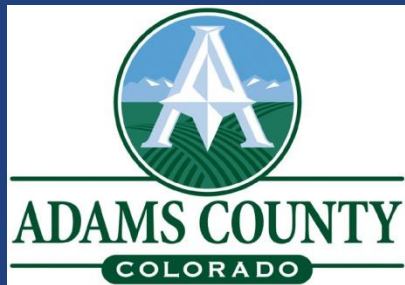


District Plan Update

Brighton City Council

November 27, 2018





Strategic Plan Framework



Recognizable and
Well-Planned
Community



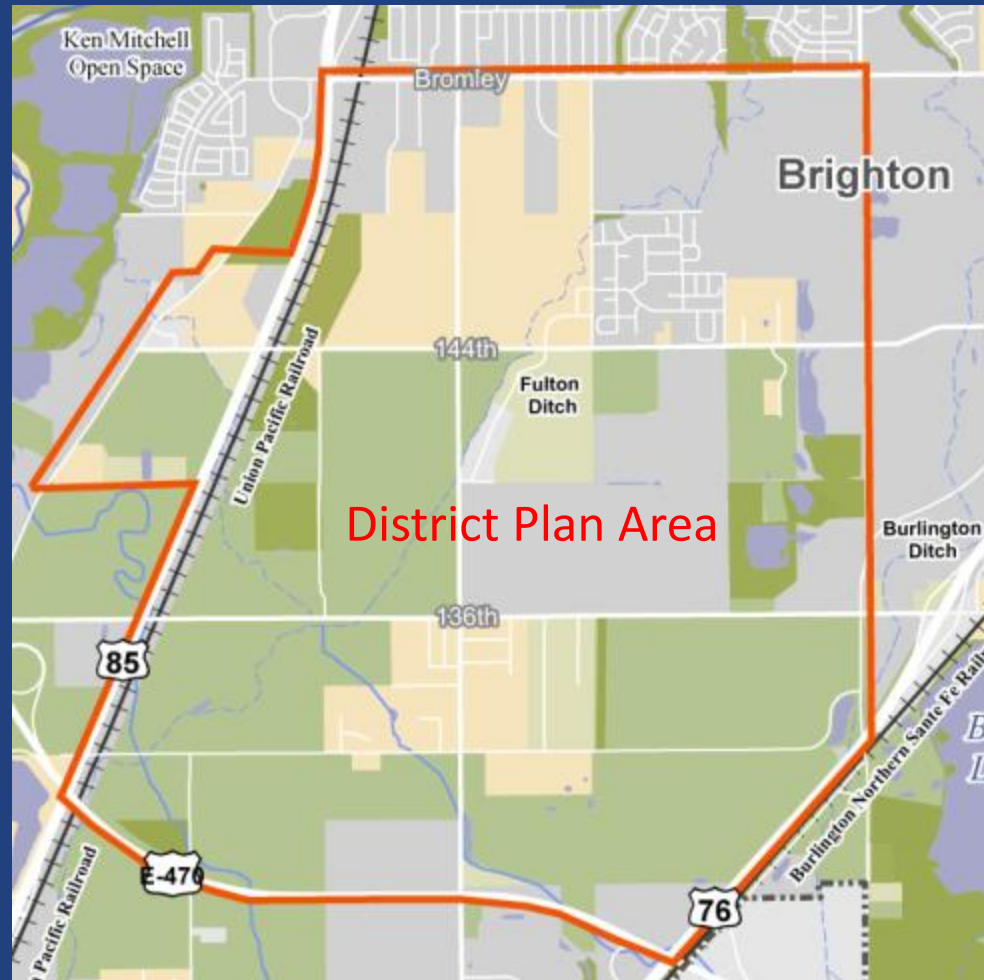
Facilities, Amenities,
and Open Space



Strong Regional
Relationships and
Partnerships

Presentation Outline

- District Plan map
- Accomplishments since May 2017
- Webpage
- 2018-2019 Work Plan & Highlights
- Next Steps

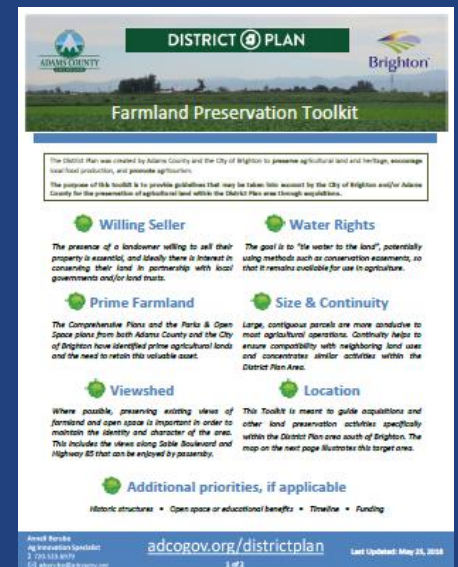


Since May 2017...

- Land Preservation – Acquisitions
 - Albert and Elizabeth Hattendorf Century Farm
 - Bromley-Hishinuma Farm (operational)
 - Murata Brothers Farm (in process)
 - 265 total acres preserved in District Plan area (includes acres preserved prior to 2017)
- Land Preservation – Toolkits
 - Farmland Preservation Toolkit (completed May 2018)
 - Conservation Easement Toolkit (tentative Dec 2018)
- Marketing
 - Brand/Logo/Wayfinding Project
 - Grants:
 - \$15,000 awarded from Colorado Tourism Office
 - Brighton Lodging Tax Grant presentation on 10/3
 - RFP for Marketing Firm



Lulu's Farm



Since May 2017...

- Public Relations
 - 4 news articles focusing on District Plan
 - Urban Land Institute tour
 - Videos: District Plan 2018 Update, Albert and Elizabeth Hattendorf Century Farm
 - Edible Economy podcast
 - 7 outreach events at City of Brighton festivals, Adams County Fair, and Bromley-Hishinuma Farm Festival
- Partnership Development
 - Local producers, schools, economic development entities, health & wellness nonprofits
- Farm to School
 - Farm to School Toolkit (completed May 2018)



Since May 2017...

- District Plan Staff
 - Monthly collaborative meetings between City & County staff
- Joint District Plan Commission
 - 7 educational presentations covering local food system components, land preservation mechanisms, etc.
 - Regular monthly meetings
 - Trainings on ethics and best practices
- Ag Innovation Specialist
 - Since June 2017; jointly-funded



Palizzi's Farm Stand



Webpage

What is the District Plan?

The District Plan was developed through a partnership between Adams County and the City of Brighton as a means to preserve valuable farmland and stimulate innovative growth opportunities in the south Brighton area. The District Plan area encompasses land in the City and the County.

The goals of this plan are to:

- Preserve agricultural land and heritage
- Encourage local food production
- Promote agritourism

Download the [District Plan Executive Summary](#) or the [full plan](#).

Contact:

Anneli Berube, Ag Innovation Specialist, aberube@adcogov.org, 720.523.6979

District Plan Commission

A nine-member commission advising on the implementation of the District Plan. [View bylaws](#).

Meetings are held on the **4th Thursday of the month at 2 p.m.** at the Adams County Government Center, 4430 S. Adams County Parkway, Brighton, CO 80601 ([map](#))

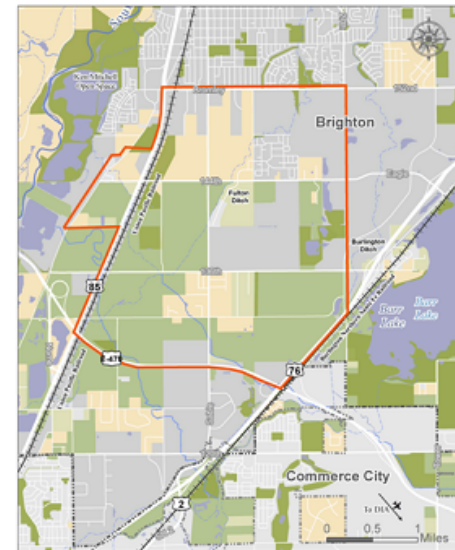
2018-2019 Work Plan

The 2018-2019 District Plan Work Plan focuses on implementing the 1-2 year Tactics from Chapter 4 Action Plan of the District Plan. The Monitoring Reports track the progress made on the Work Plan and will be provided at the end of each quarter throughout 2018 and 2019.

[2018-2019 District Plan Work Plan](#) (large file)

[2018 Quarter 1 Monitoring Report](#)

[2018 Quarter 2 Monitoring Report](#) (updated)



Click map to enlarge

2018-2019 Work Plan

- Developed by County & City District Plan Staff using the timing and priorities laid out in the Plan
- 28 Tactics with Measurable Outcomes
- Over 40 Potential Stakeholders Identified



Work Plan Highlights

- Codes and Standards to advance District Plan vision
- Land Preservation Opportunities
- Farm to School Resources and Programs
- Marketing, Agritourism & Business Development
- Identifying & Developing Local Food System
- Land Management & Best Practices



Next Steps

- Continue implementation of Work Plan
- Work Plan items for 2019:
 - Develop strategies to improve local food access for low income and elderly populations
 - Explore best management practices for agricultural properties
 - Identify opportunities to encourage compatible land use and development in the District Plan area



Bromley-Hishinuma Farm