



Brighton-Commerce City IGA

City Council Meeting: December 4, 2018

City Staff Representative: Lauren Simmons, AICP, *Senior Planner*



Strategic Focus Areas

Recognizable and Well-Planned
Community



Strong Regional Relationships and
Partnerships





Background

Original IGA approved in February of 1989

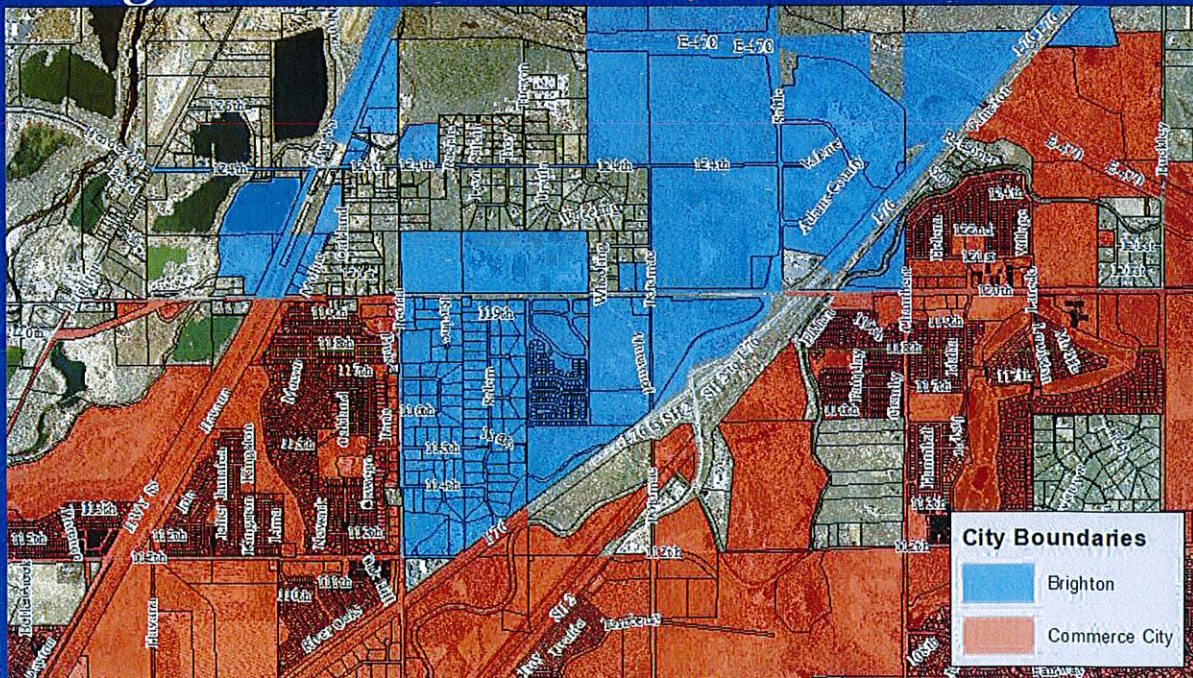
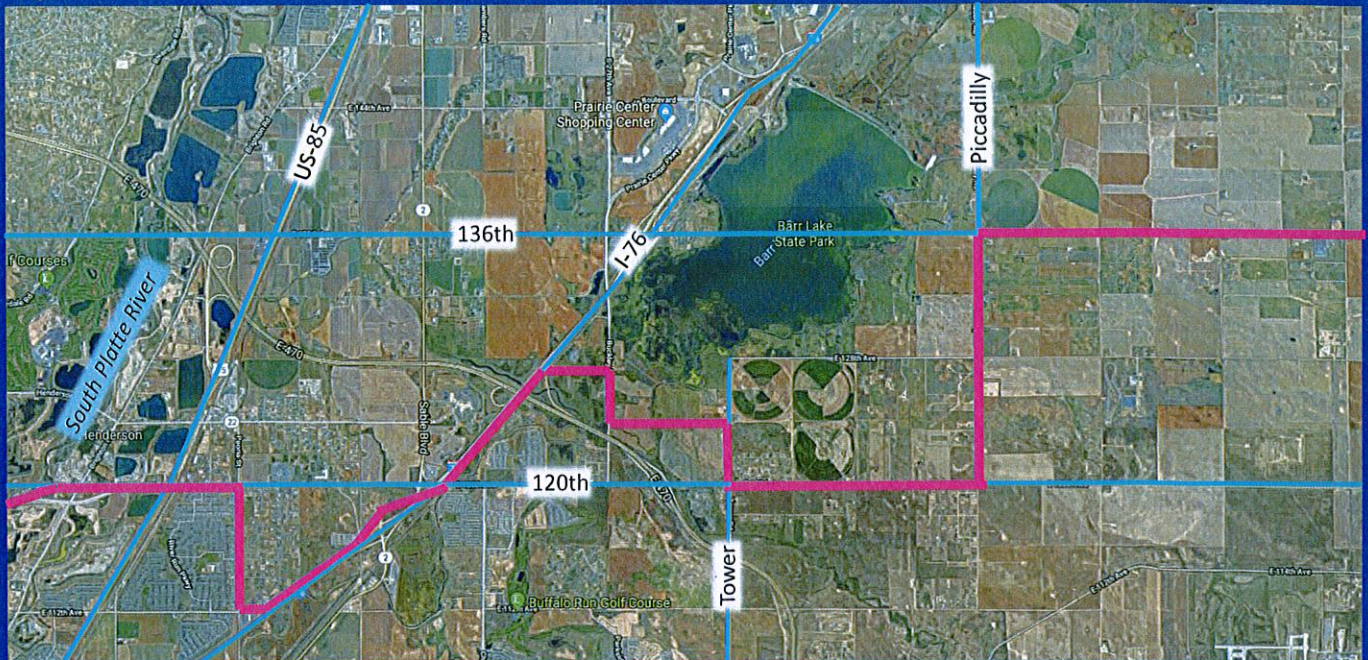
- Set a boundary between the two communities.
- Established a Revenue Sharing area along 120th Avenue.
- Allowed for Joint Planning in the Revenue Sharing area.
- Developed under a vision that the 120th Avenue corridor would be developed and improved by a joint effort by both communities.



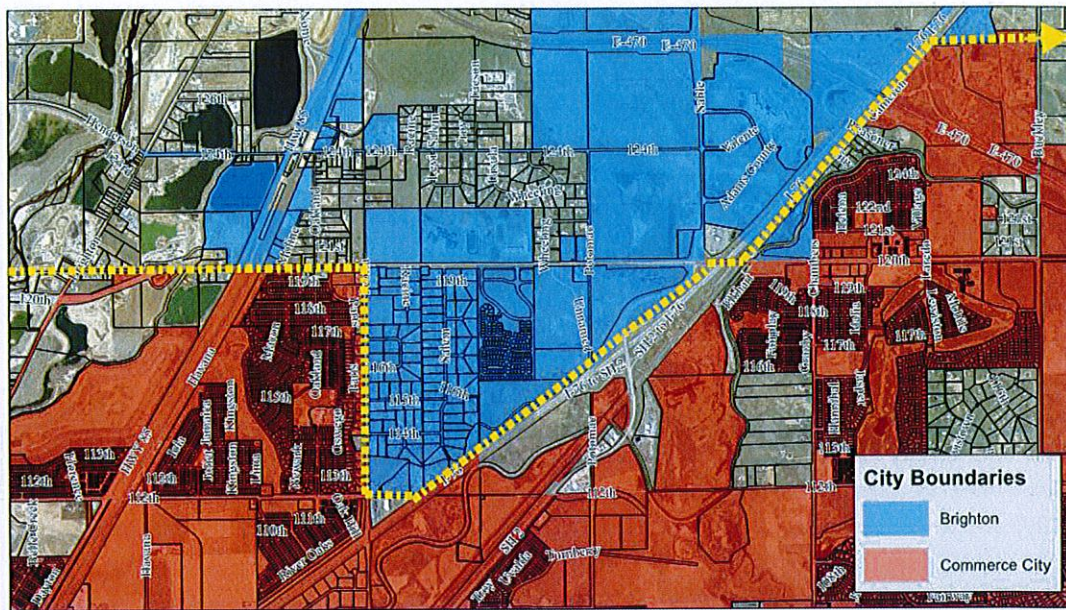
Background

What has changed since 1989?

- Construction of Prairie View Middle School in Brighton.
- Construction of Prairie View High School in Brighton.
- Platting and construction of 1000's of Single Family Detached units along the corridor.
- Commerce City has deannexed portions of 120th due to maintenance costs.
- Revenue sharing along 120th Avenue has not occurred.



Proposed Boundary-Brighton and Commerce City

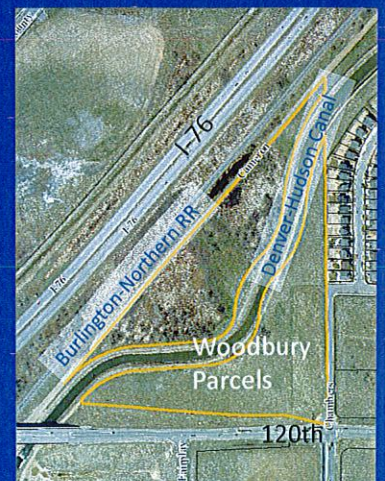
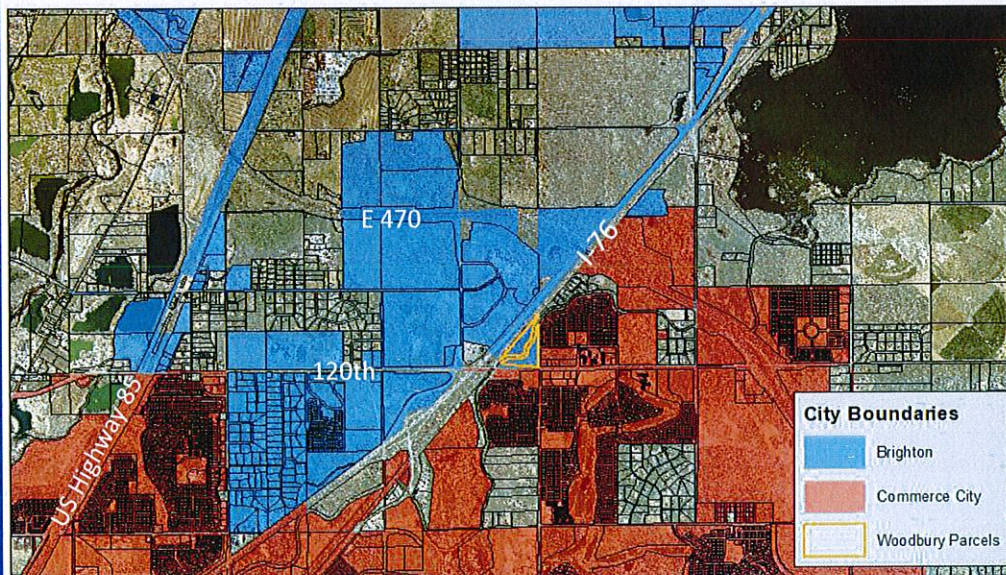


Community Development Department - Planning Division

7

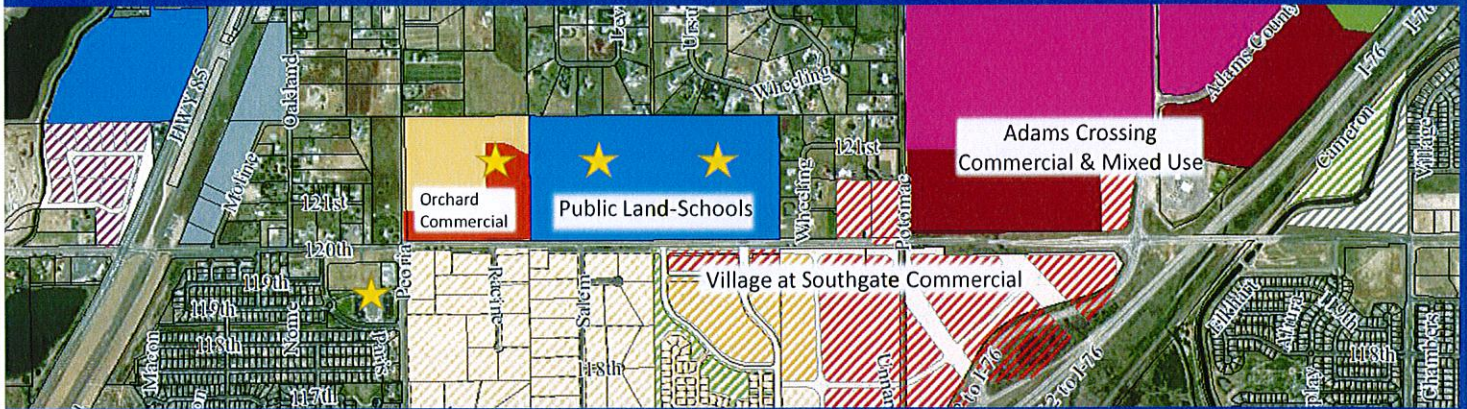
Boundary Change

Proposed Land to Commerce City



Community Development Department - Planning Division

8



Staff Recommendation

- Eliminate the revenue sharing provision of the 1989 IGA.
- Amend the IGA with Commerce City to amend the boundary between the two communities, allowing Commerce City to annex the 20 acres east of I-76.
- Specify the boundary to right-of-way lines or centerlines matching the existing city limits of both communities.
- Approve the drafted IGA and attached Resolution.