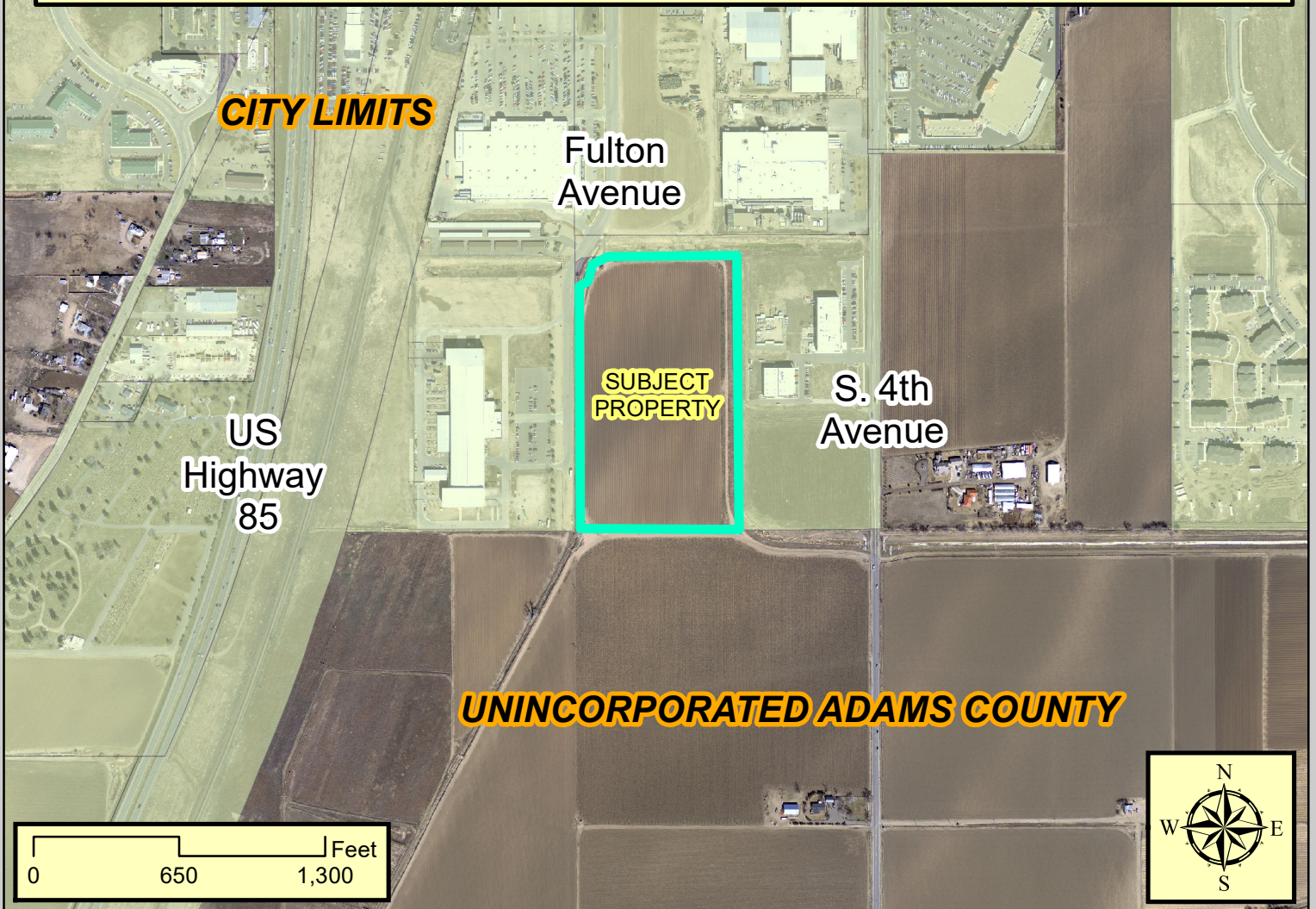


Marrone Trucking Annexation



Project: Marrone Trucking Annexation

Applicant: Sarah Lavery, EnviroFinance Group
Property Owners: Kenneth M. Marrone & Marrone EAT, LLC

City Staff Representative: Mike Tylka,
Community Development

Zone Districts



The map or digital product created or displayed was compiled from a variety of city, county, state and federal maps, records, and surveys at various scales, accuracy, timeliness, and completeness. The City of Brighton has made every effort to ensure the accuracy of the map or digital product; however, due to the matters beyond its control, the City does not guarantee the accuracy of the map or digital product and assumes no liability for use, reliance or misuse of the map or digital product. The City of Brighton shall not be held liable for any direct or indirect damage, loss, or liability as a result of using these maps or digital products. For more information about the digital map and GIS data please contact the City of Brighton's GIS Division.

Future Land Use

