



# Consideration of Transferring Small Parcels of Park/Open Space to the Brighton Crossing Metropolitan District

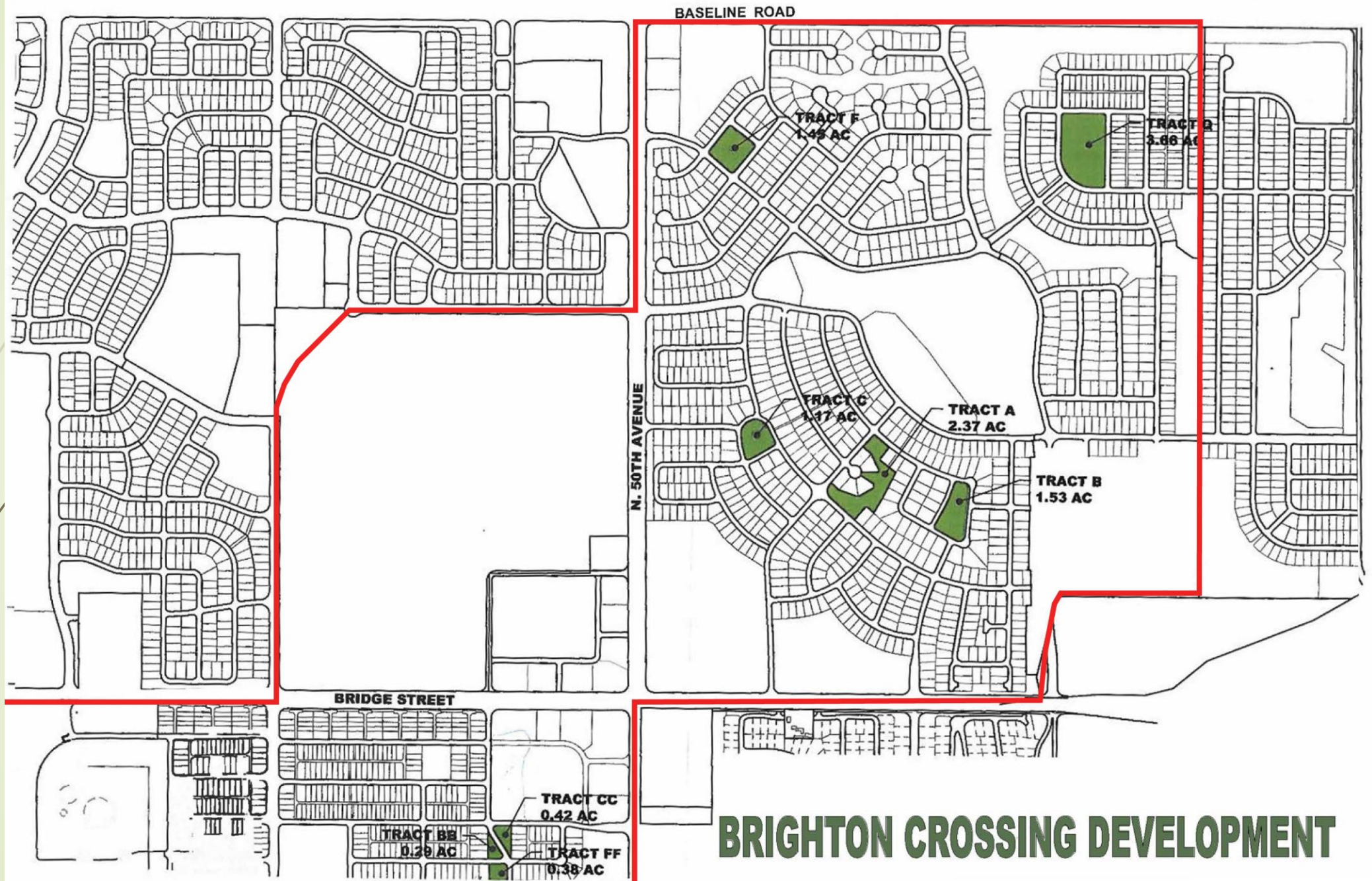
# STRATEGIC PLAN FOCUS AREA



**FACILITIES, AMENITIES, AND OPEN  
SPACE**



**RECOGNIZABLE AND WELL-  
PLANNED COMMUNITY**



## BRIGHTON CROSSING DEVELOPMENT

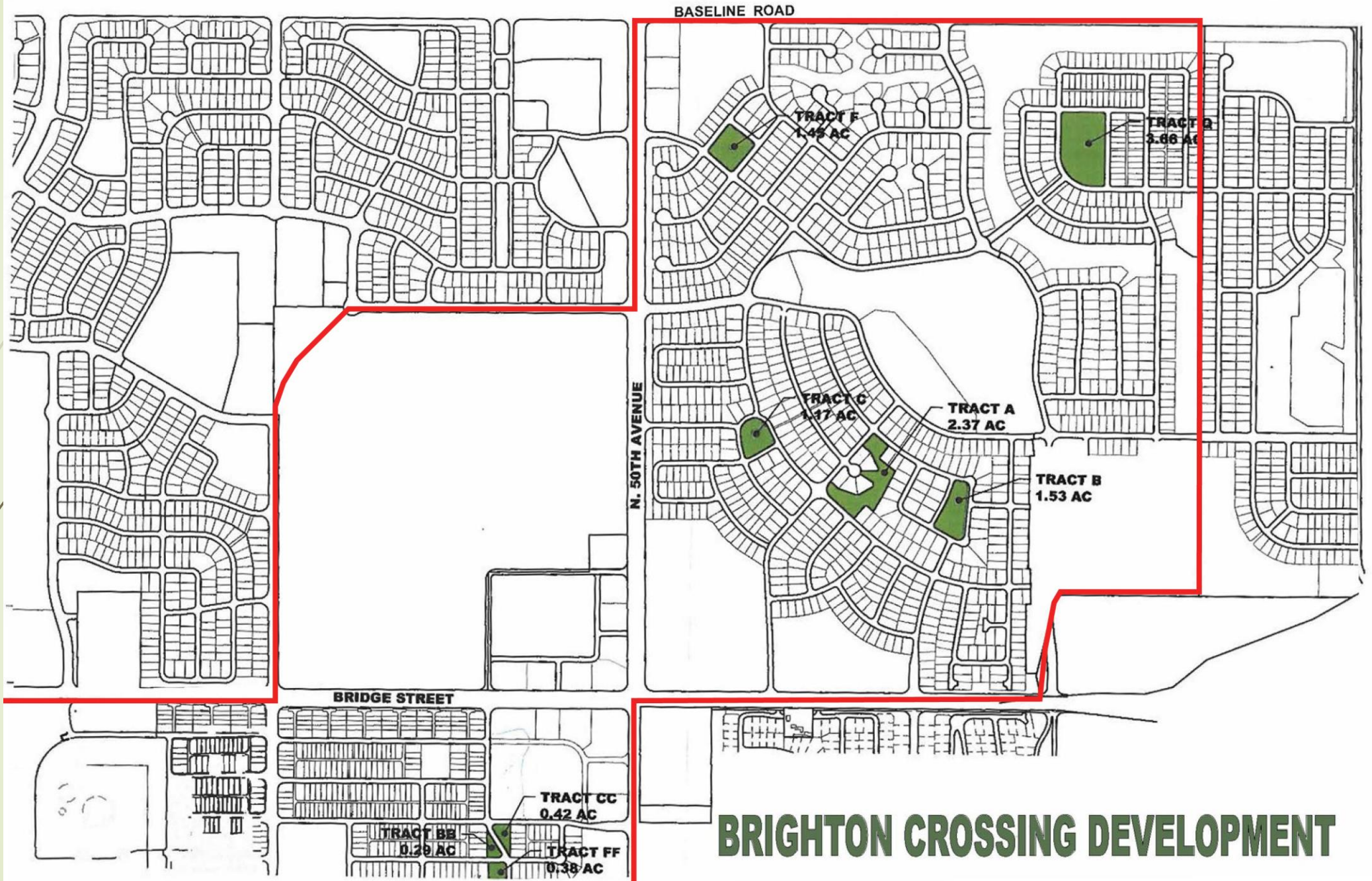


## HISTORY

- 1990's-2000's: Brighton Crossings dedicates eight (8) small tracts of land to the City of Brighton
- Average acreage of seven (7) tracts is less than 2 acres. One is 3.6 acres
- Over the years, the Brighton Crossing Metro District (BCMD) developed these small tracts into pocket parks and neighborhood connections
- Since then, BCMD has maintained these tracts
- The City has had no involvement with the tracts' maintenance or operations

## HISTORY (cont'd)

- 2019: New Development Code approved by the City Council
- City will not take maintenance responsibility for any tract less than 5 acres in size
- City staff recommends the City transfer ownership of these tracts to BCMD
- Transferring ownership will clarify who is responsible for the maintenance and liability for these tracts.
- Transferring these tracts will also meet the intent of the new Development Code.



## BRIGHTON CROSSING DEVELOPMENT



# CITY OWNED TRACTS

- Filing 1 Tract A – 2.37 ac (Open Space)
- Filing 1 Tract B – 1.53 ac (Public Park)
- Filing 2 Tract C – 1.17 ac (Park)
- Filing 2, 3<sup>rd</sup> Amendment Tract F – 1.45 ac (Park)
- Filing 2, 5<sup>th</sup> Amendment Tract Q – 3.66 ac (City Park)
- Filing 3 Tract BB – 0.29 ac (Open Space/Electric-Gas Easement/Sidewalk/Drainage)
- Filing 3 Tract CC - 0.42 ac (Open Space/Electric-Gas Easement/Sidewalk/Drainage)
- Filing 3 Tract FF - 0.38 ac (Open Space/Electric-Gas Easement/Sidewalk/Drainage)

## TRACT Q (SPREE PARK)

- Eighth tract is 3.66 acres residing in the far northeastern corner of Brighton Crossings.
- BCMD is requesting the City Council to consider transferring Tract Q to BCMD.
- BCMD wishes to develop Tract Q to include amenities that will be owned, operated, insured and maintained by BCMD.
- Transferring Tract Q also meets the intent of the new Development Code since it is over an acre short of the 5 acre minimum.