

Historic Splendid Valley

Anneli Berube, Ag Innovation Specialist
Travis Haines, Director of Parks & Recreation
January 12, 2021





Strategic Focus Areas



Recognizable and
Well-Planned Community



Strong Regional Relationships
and Partnerships



Presentation Outline

- **Brief Overview** of the District Plan
- **Historic Splendid Valley**
- **Activities & Accomplishments**
- **Farmland Preservation**



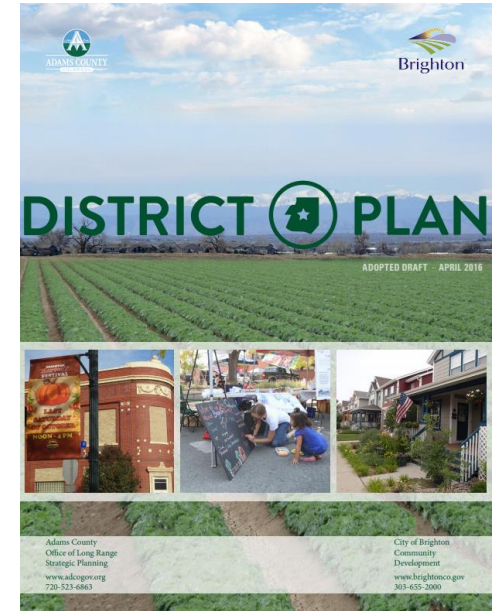
District Plan & Historic Splendid Valley

A brief overview



District Plan

- Award-winning plan
- Adopted in 2016
- Goals:
 - **Preserve** Agricultural Land
 - **Encourage** Local Food Production & Consumption
 - **Promote** Agritourism



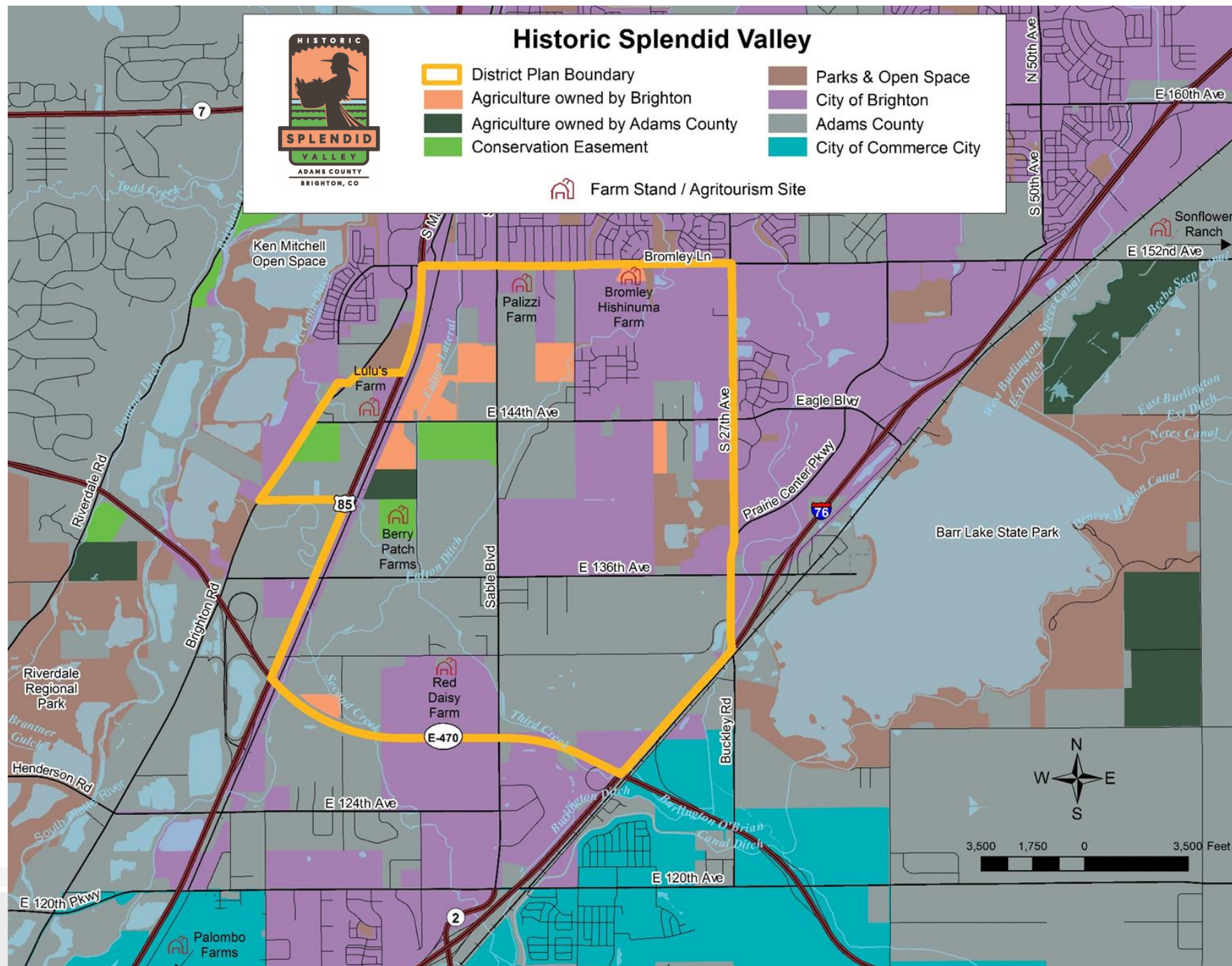


History of the District Plan

- Rich agricultural history & heritage
- Prime farmland soils, senior water rights
- Strong public support for agriculture and farmland preservation
- Farmland preservation in this area referenced in plans dating back over 20 years
 - Most recently, in the 2016 Be Brighton Comprehensive Plan



From Be Brighton resident survey; included in District Plan pg. 8





Historic Splendid Valley



Benefits of local farms

- **Food dollars** circulate in community
- **Access** to healthy, fresh produce
- **Donations** to food pantries, food banks, local nonprofits
- **Visitors** to Historic Splendid Valley for tourism and educational experiences
- **Support** for future generations of farmers





Activities & Accomplishments

District Plan implementation

Completed Projects & Activities

- Farmland Preservation
- Conservation Easement tool kit
- Historic Splendid Valley brand
- Marketing & Public Relations Plan
- Local Foods Workshop
- Transfer of Development Rights (TDR) Study





Farmland Preservation

Realizing the vision

By the numbers

- Farmland preserved:
 - before 2016: **264** acres in 16 years
 - after 2016: **181** acres in 4 years
 - **445 total acres**
 - 288 acres acquired, 156 acres in conservation easements
- Over \$9.5 million in outside funding
- Competitive grants processes



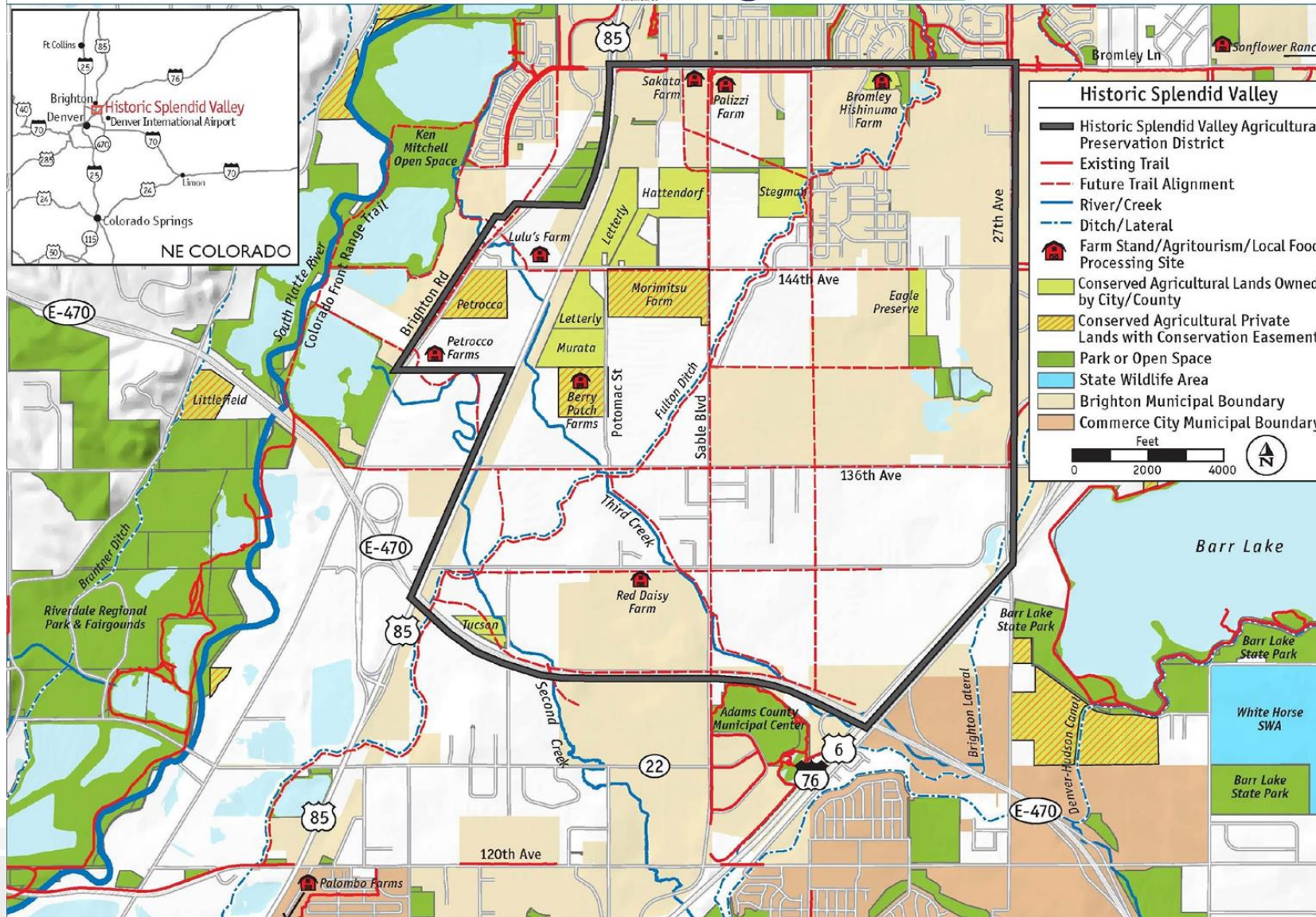


Historic Splendid Valley

City of Brighton, Adams County, Colorado



THE
CONSERVATION FUND



Map created by The Conservation Fund shows names of preserved properties, existing and proposed trails, and other preserved areas.



City's farmland leases in Historic Splendid Valley

- 6 different farmer lessees who grow vegetables, herbs, landscaping trees, alfalfa, and more
- 6 leased properties
- 250 acres of leased farmland
- Competitive lease rates



Letterly Property North, photo courtesy of Apple-Lavender Farm.



Letterly Property South, Autumn Landscaping.



Future Plans

What is planned for 2021 & beyond

Planned Projects & Activities

- Ongoing land preservation efforts
- Complete Wayfinding Sign project
- Explore possible zoning code changes for agriculture
- Webpages describing preserved properties
- ... and much more.

