



Mile High Flood District (MHFD) IGA- Sable Outfall

City Council Study Session – December 9, 2025

City Staff Representative:

Scott Olsen, Director of Utilities

Department:

Utilities



Presentation Contents

- Project Overview
- Project Location
- Intergovernmental Agreement Overview
- Staff Recommendation
- Questions



Project Overview

- Sable Outfall is a regional stormwater outfall that will carry flow from the southeast portion of the City including existing and proposed development.
- Runoff anticipated from Sable Boulevard improvements, Farmlore Development and approximately 500 acres of the Prairie Center Development.
- As previously presented, Farmlore's contractor will install piped portion under Fulton Ditch concurrent with install of a regional sanitary sewer interceptor.

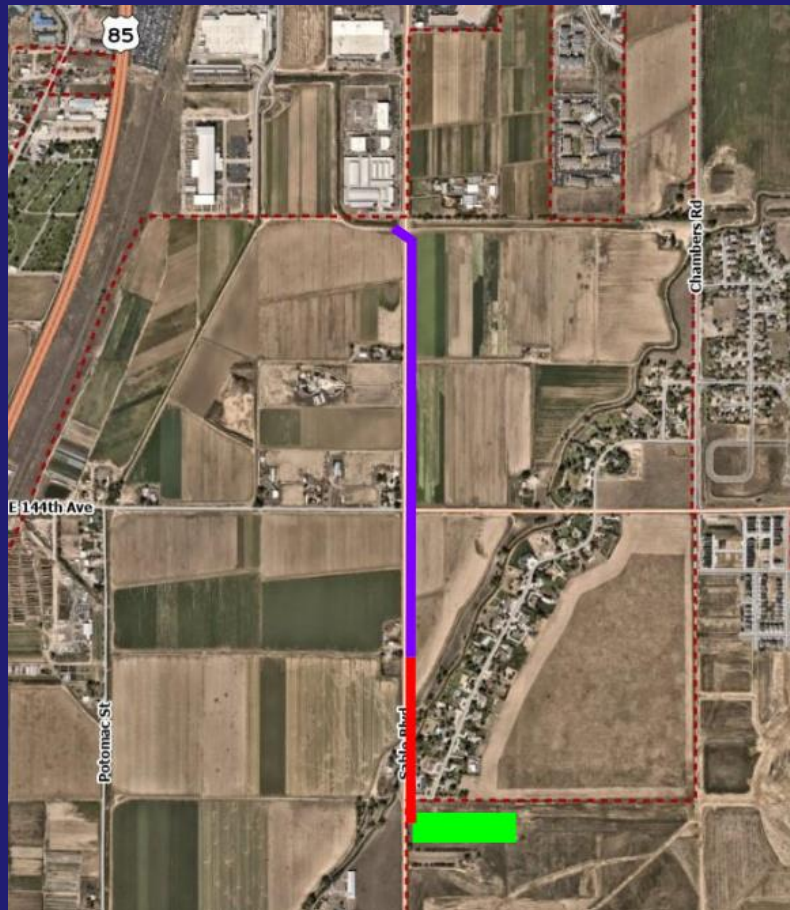


Project Overview

- City and Mile High Flood District now wish to complete design and construct the remainder of the open channel outfall just east of Sable Boulevard, which will connect to existing South Outfall Channel at 148th Avenue alignment.



Project Location





Intergovernmental Agreement Overview

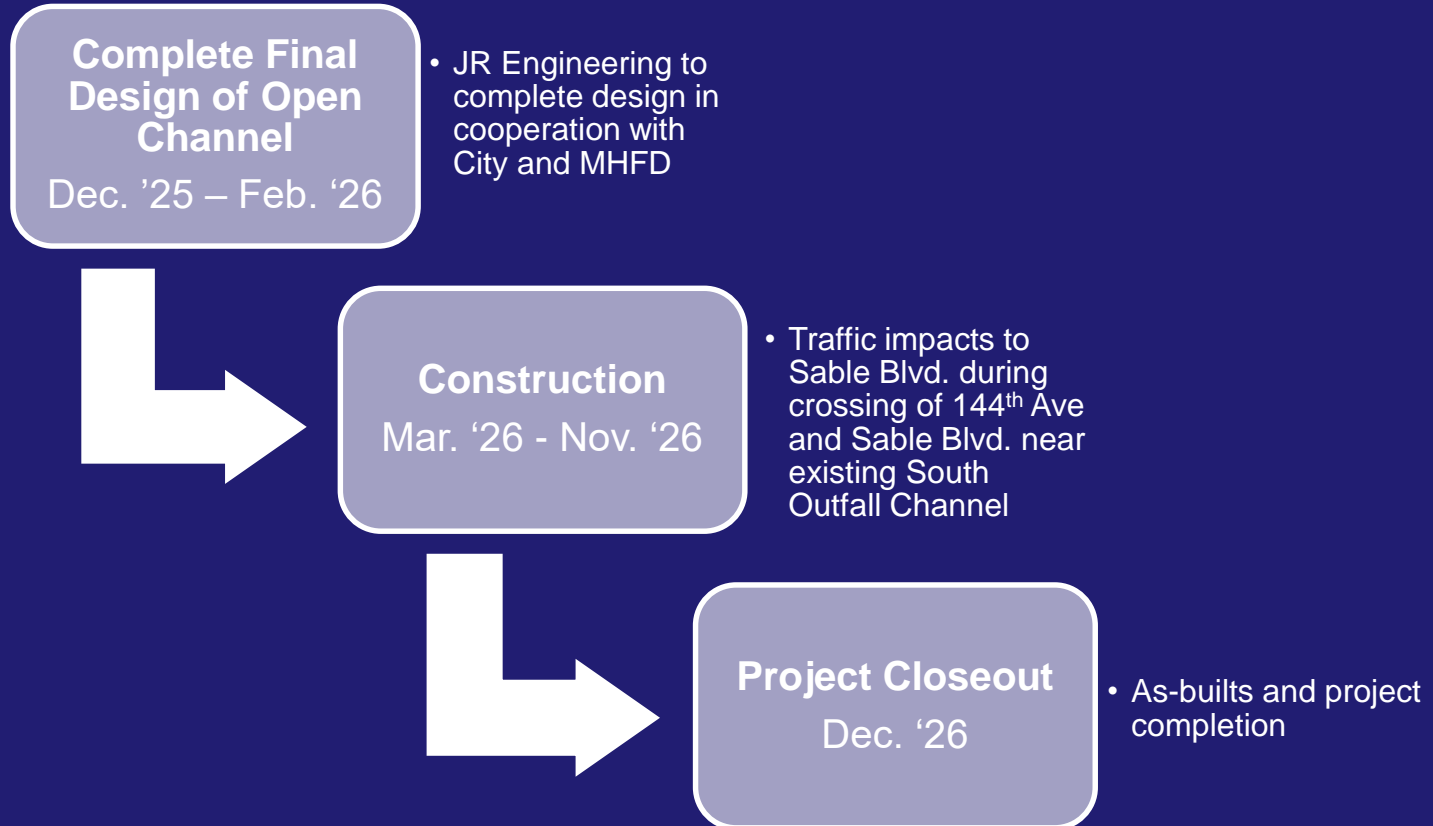
- MHFD and City will each contribute funding for the construction of the project:
 - MHFD- \$225,000 in 2025; \$2M anticipated in 2026
 - City- \$225,000 in 2025; \$2M anticipated in 2026
- MHFD will procure a contractor and provide construction management services for the project.



Key Stakeholder Outreach

- City has released numerous communications to residents about upcoming construction activities impacting the area along Sable Boulevard, including video updates, social media postings and public meetings.
- Cone Zone will be updated as project moves forward.
- Message boards will be displayed in the project area prior to construction activities.
- Direct coordination with leaseholder for Wagner-Mayhew property ongoing.

Schedule Overview





Staff Recommendation

- At a future City Council meeting, City staff recommend approval of the resolution as drafted, authorizing the City Manager, or designee, to execute the Intergovernmental Agreement.



Questions

