



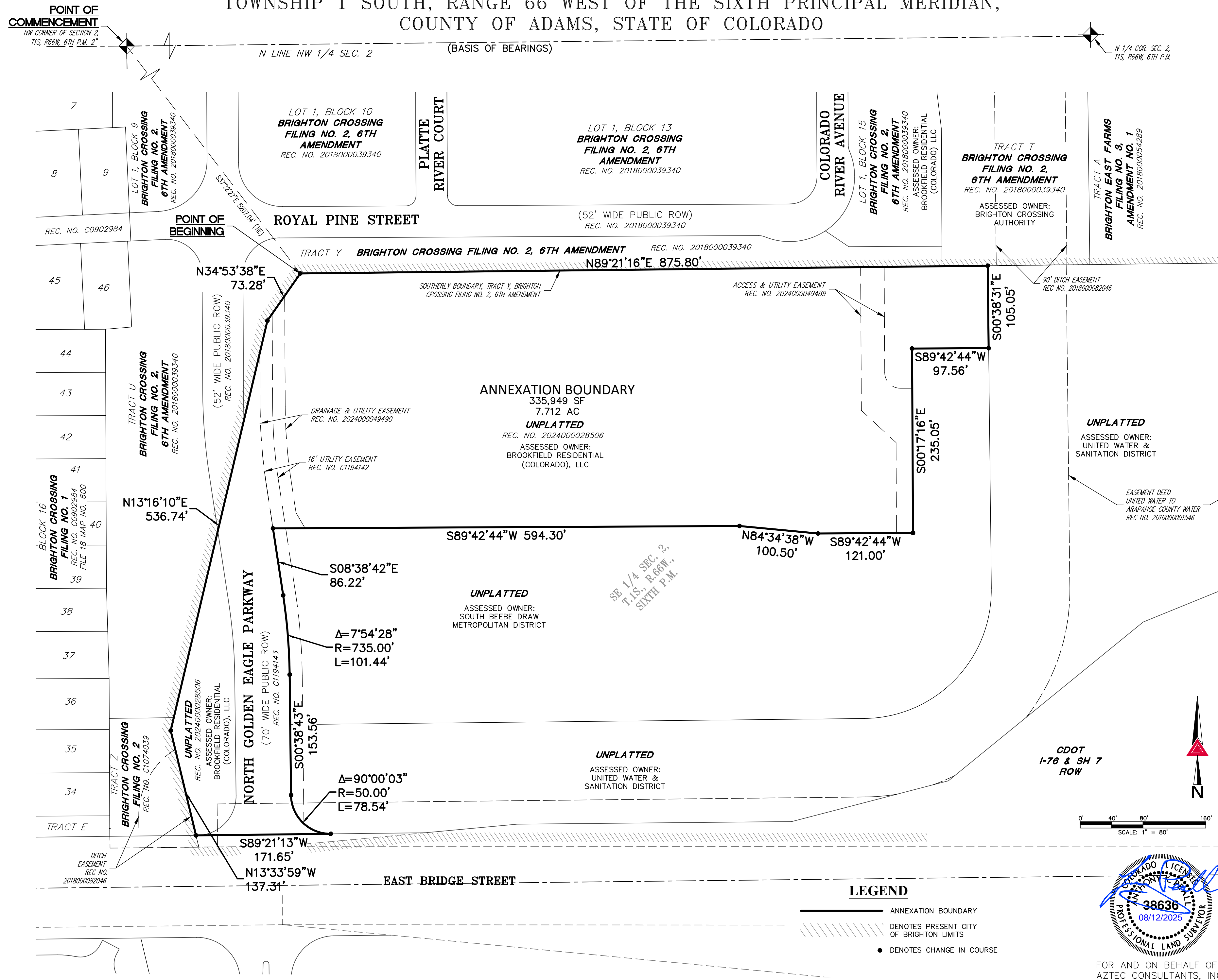
08/28/2025

A PORTION OF THE SOUTHEAST QUARTER OF SECTION 2,
TOWNSHIP 1 SOUTH, RANGE 66 WEST OF THE SIXTH PRINCIPAL MERIDIAN,
COUNTY OF ADAMS, STATE OF COLORADO

A PORTION OF THE SOUTHEAST QUARTER OF SECTION 2.

TOWNSHIP 1 SOUTH, RANGE 66 WEST OF THE SIXTH PRINCIPAL MERIDIAN,

COUNTY OF ADAMS, STATE OF COLORADO



3300 East Mineral Ave., Suite 1
Littleton, Colorado 80122
Phone: (303) 713-1898
Fax: (303) 713-1897
www.azteconsultants.com



AZTEC
CONSULTANTS INC.

ANNEXATION MAP
SE 1/4 SEC. 2, T.1S., R.66W., 6TH P.M.
ADAMS COUNTY, COLORADO

ADAMS COUNTY, COLORADO

PREPARED FOR

BROOKFIELD RESIDENTIAL

6465 GREENWOOD PLAZA BLVD STE 700, CENTENNIAL, CO 80111

**SHEET
TWO**

OF 2 SHEET

JOB NO. 69718-12