

Downtown Public Realm Study Update

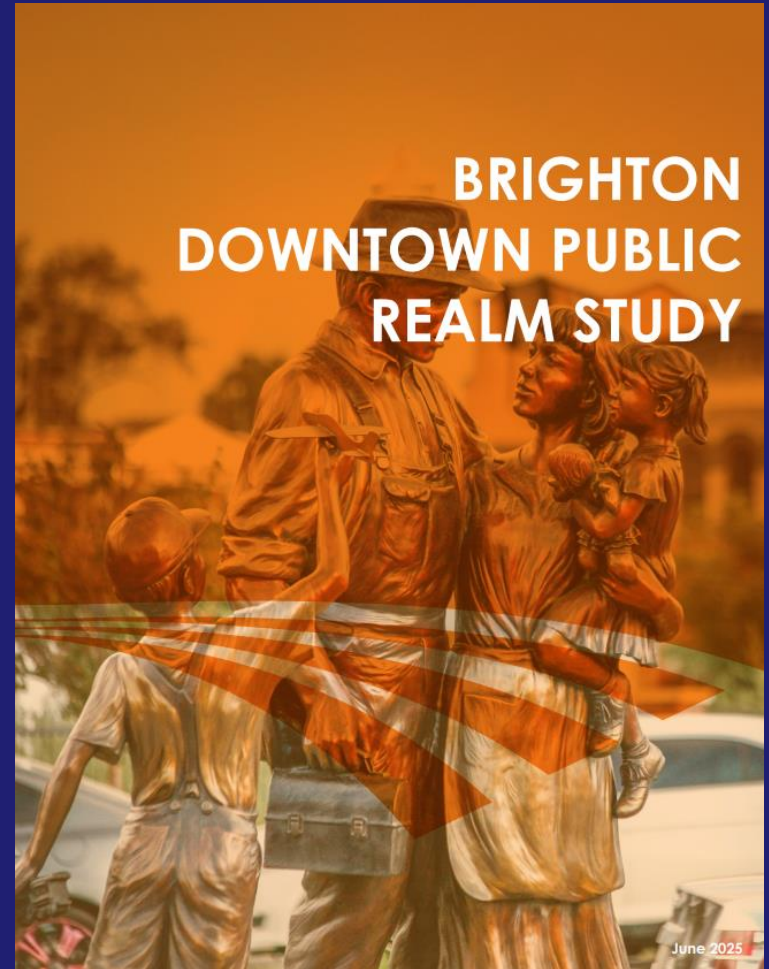
CITY COUNCIL STUDY SESSION –
April 28, 2026

City Staff Representatives:

Emma Lane, AICP, Senior Planner – Historic Preservation
Gary Montoya, Events and Downtown Initiative Manager
Aaron Herrera, Executive Director of BURA and Business
Development Project Manager

Background on the Downtown Public Realm Study

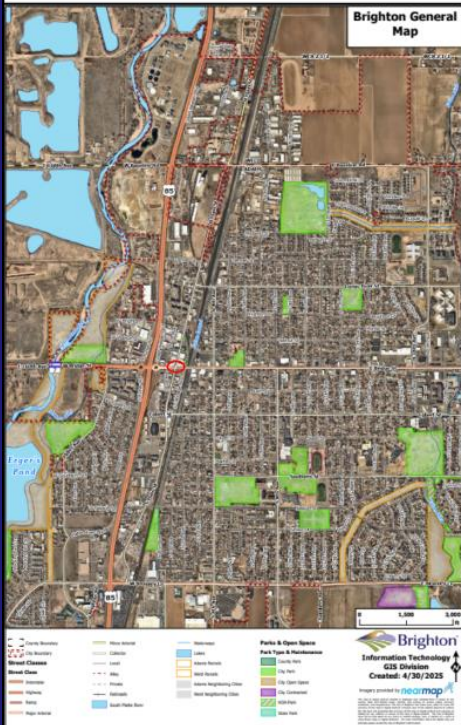
- Staff contracted with Dig Studio to create a Downtown Public Realm Study
- Plan evaluated downtown public realm features and made recommendations
 - Includes roadway configuration changes, safety upgrades, and functional changes to the public realm
- Plan was completed in March 2025 and staff has been working to complete items featured in the plan



Public Realm Study Updates

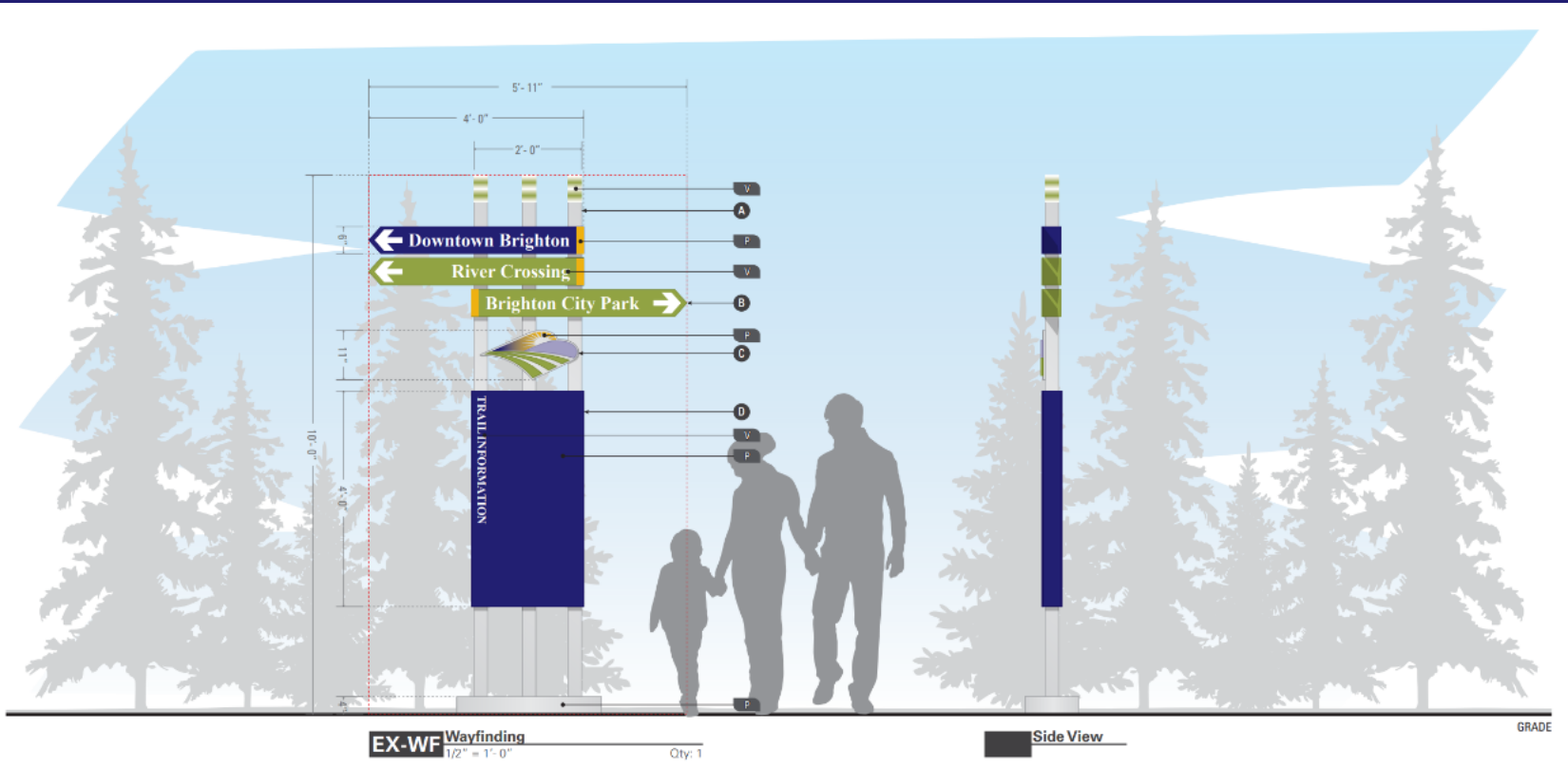
S1 – Reduce truck traffic on Main Street

Bridge & Main Signage



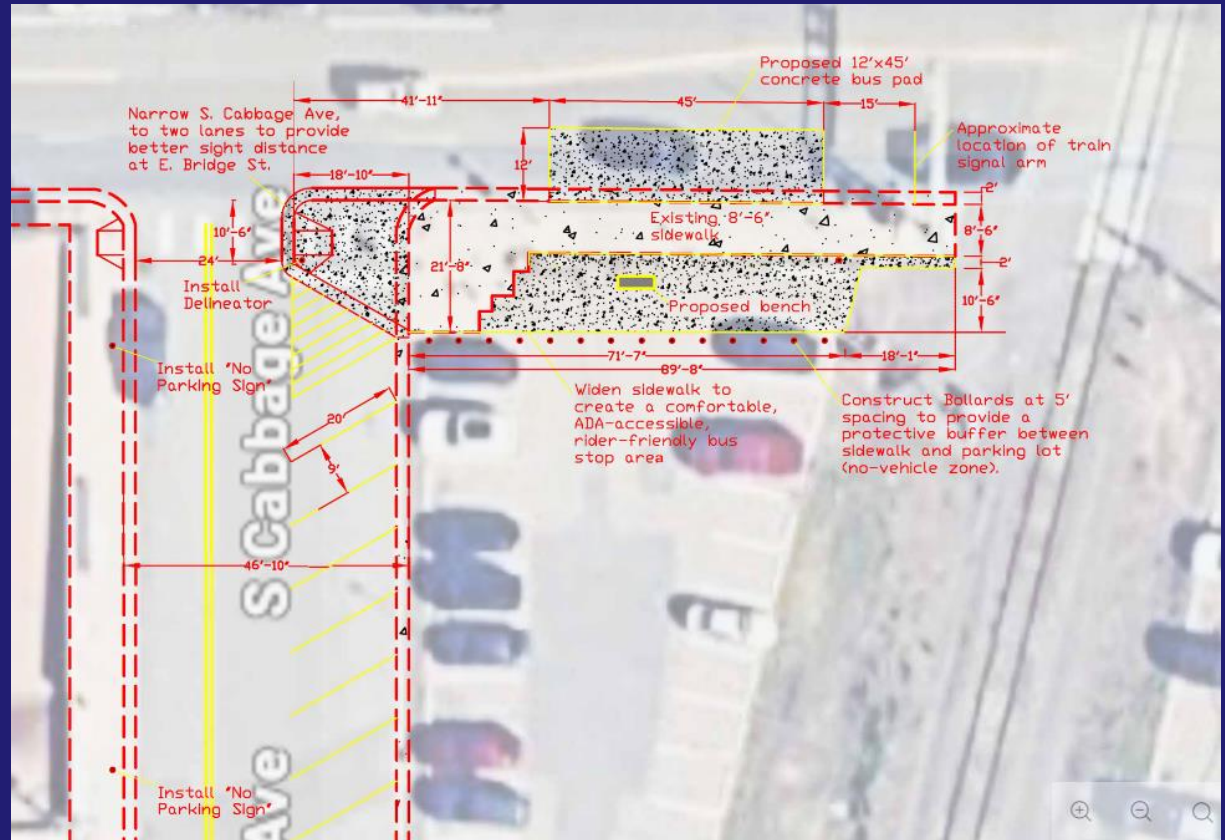
Public Realm Study Updates

S2 – Enhance Wayfinding and Signage



Public Realm Study Updates

S3 – Install BRT stop on Main Street

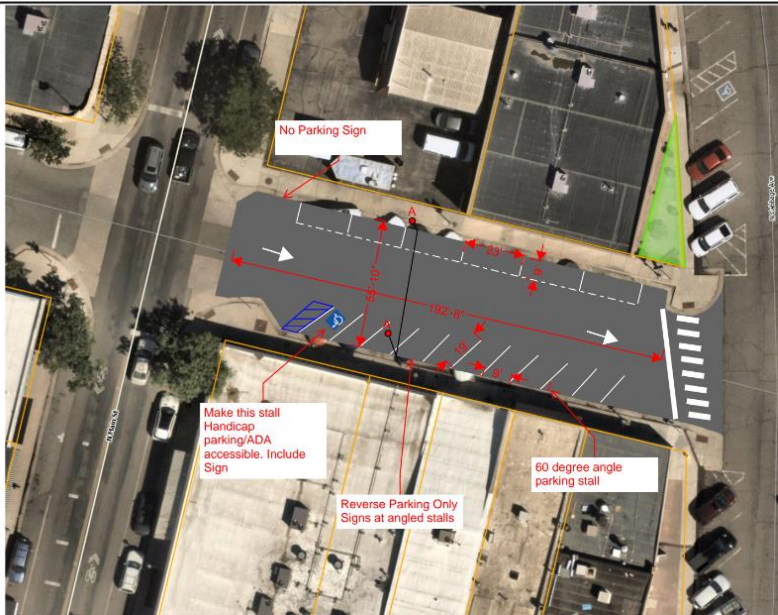


Public Realm Study Updates

S8 – Restripe Strong Street



Strong St Re-strip



Make this stall Handicap parking/ADA accessible. Include Sign

60 degree angle parking stall

Reverse Parking Only Signs at angled stalls

Brighton General Map

- County Boundary
- City Boundary
- Adams Parcels
- Weld Parcels
- Adams Neighboring Cities
- Weld Neighboring Cities
- Lakes
- City Park
- County Park
- City Park
- City Open Space
- HGA Park
- State Park

Brighton
Information Technology
GIS Division
Created: 2/5/2025



Imagery provided by [nearmap](#)



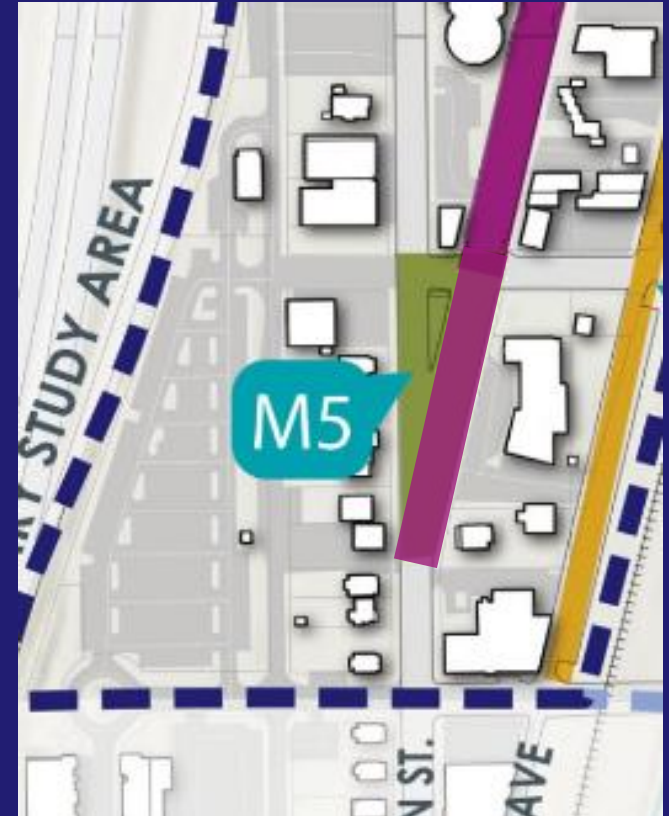
Future Public Realm Study Projects

S7 – Safety improvements at Bridge St and Main St



Future Public Realm Study Projects

M5 – Expand green space at 1st Ave, Main St, and Bush St intersection



Future Public Realm Study Projects

L7 – Implement a “Quiet Zone” for Railroad



Options for Consideration

The City Council has the following options to consider:

- ❑ Direct staff to proceed with exploring the projects as presented;
- ❑ Direct staff to proceed with different projects as identified by the City Council; or
- ❑ Direct staff not to proceed with furthering any projects at this time.