



STEPS
Strategic Technical
Expertise for the
Public Sector

Hauler Licensing for Brighton

July 7, 2026
Audrey Wheeler



Strategic Technical Expertise for the Public Sector



Colorado Circular Communities (C3) is a statewide program that provides financial and technical assistance to enhance circularity across the state, and helps communities achieve their waste diversion and aversion goals.



Brighton was selected to receive no-cost consulting from C3's Strategic Technical Expertise for the Public Sector (STEPS) program.



Resource Recycling Systems (RRS) and Eco-Cycle are working with Brighton on policy recommendations for a hauler licensing ordinance.

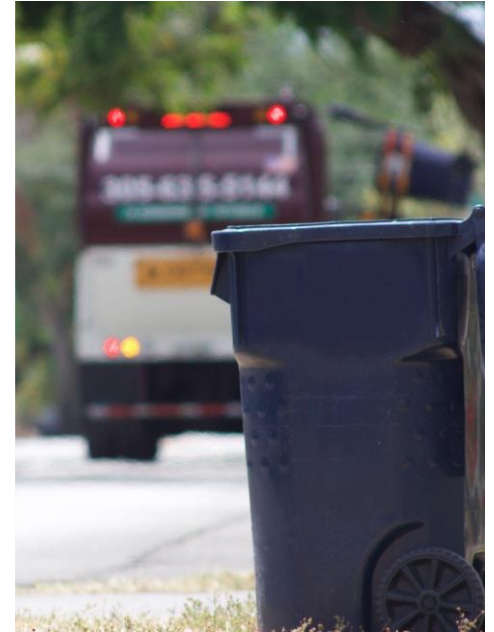
Incorporating Council Feedback

Changes Made to Ordinance:

- No license fee for haulers
- Pay-As-You-Throw (PAYT) removed
- Junk haulers are exempt

Ordinance Clarifications:

- Residents are not required to recycle
- Haulers are not required to provide organics collection



Why Hauler Licensing?

- Improves transparency, data collection, safety and operational standards
- Holds haulers accountable for illicit discharges, customer service standards, and operating hours
- Expands access to recycling for residents
- Maintains an open market for waste collection
- Consistent with regional best practices & peer communities



Ordinance Components, 1 of 3

- Application
 - Includes contact, vehicle information, facilities use, and insurance
 - Covered haulers include those providing trash, recycling, compost, and construction and demolition debris services

Ordinance Components, 2 of 3

- Vehicle requirements
- Labeling requirements
- Operating hours (6:00 AM - 9:00 PM)
- Annual reporting, to include:
 - Weight in tons of waste streams
 - Total service accounts by customer sector and waste stream
 - Education and outreach activities
 - Destination facilities tonnages
- Enforcement and penalties



Ordinance Components, 3 of 3

- Recycling collection services requirements
 - Haulers providing regular curbside trash services must provide recycling services at no charge to single family and multifamily homes contingent on Colorado's Producer Responsibility program
 - Minimum biweekly (every two weeks) recycling collection frequency
 - Verification that collected recyclables are delivered to and processed at designated recycling facilities
 - Proper disposal of solid waste, recycling, and organic waste streams

Thank You!



Defining Terms, 1 of 3

Hauler: A hauler is an individual or company that collects and transports waste materials (solid waste, hazardous waste, recyclables, etc.). Haulers take materials to different facilities depending on the material type. They are responsible for transporting materials for disposal, treatment, storage, recycling, or processing.

Hauler License: Hauler license systems or policies regulate waste collection services within a community. They require collection companies to register for a license before collecting waste within a certain area. There are different requirements that can be included in each individual policy.

Ordinance: An ordinance is a law adopted by a local government (such as a city, town, or county). It establishes rules or requirements within that jurisdiction.

Defining Terms, 2 of 3

Single Family: Single-family is a designation for residential buildings. Single-family buildings typically are standalone homes with their own utilities.

Multifamily: Multifamily properties are residential buildings containing many separate housing units. This includes apartments, condominiums, or townhomes. The number of units is what defines a building as multifamily, and that number differs based on each community. In Colorado, a multifamily property typically has more than eight units.

Pay-as-you-throw: Pay-as-you-throw programs charge residents for the collection of waste based on the amount they throw away. Residents typically pay for the size of their trash bins, and recycling and/or compost bins are free. If a resident chooses a smaller trash bin, they will pay less for the service.

Defining Terms, 3 of 3

Construction and Demolition Debris: Construction and demolition debris is waste generated during the building and taking down of structures. This can include construction, renovation, and repair. It can also include the demolition of buildings, roads, and other structures.

Compost: Compost is the result of decomposing organic material, such as food scraps and yard trimmings. It is usually added to soil to improve the soil's health, structure, and fertility.

Curbside Collection: Curbside collection is the collection of waste that is set out on the side of the street or alleyway. It is common with single family homes and townhouses that have their own curbside bins. It can include garbage, recycling, and/or compost collection.