

Project Area

Bromley Park Planned Unit Development 32nd Amendment Zoning Map Amendment

City Staff Representative:
Stephanie Iams
Community Development
Department

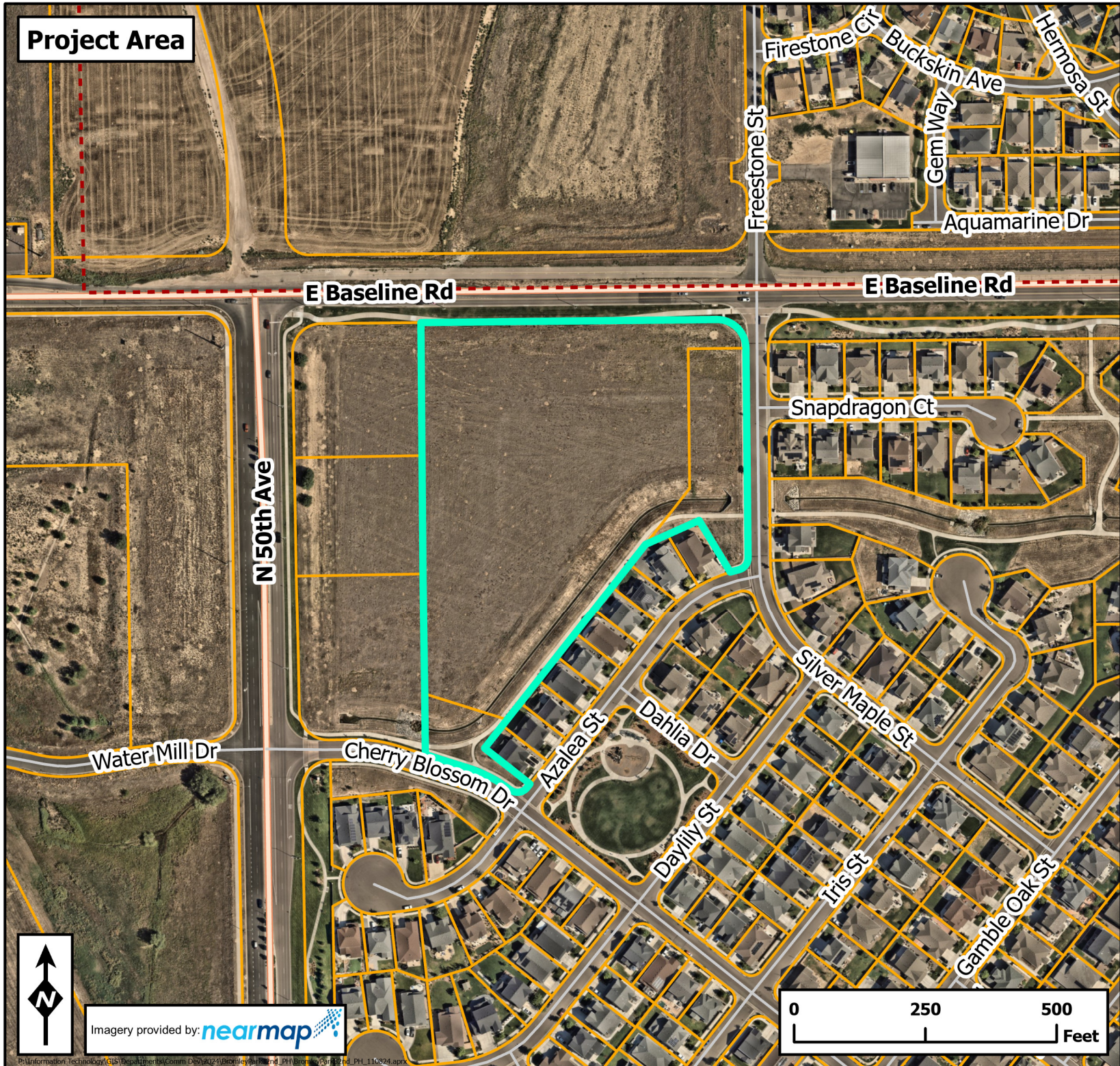
Project Contact:
Dewberry

Property Owner:
Brookfield Residential

-  Subject Parcel
-  Parcel Boundary
-  City Boundary
-  Freeway/Highway
-  Major Road
-  Minor Road
-  Ramp

 **Brighton™**
Community Development
Created: 11/8/2024

The map or digital product created or displayed was compiled from a variety of city, county, state and federal maps, records, and surveys at various scales, accuracy, timeliness, and completeness. The City of Brighton has made every effort to insure the accuracy of the map or digital product; however, due to the matters beyond its control, the City does not guarantee the accuracy of the map or digital product and assumes no liability for use, reliance or misuse of the map or digital product. The City of Brighton shall not be held liable for any direct or indirect damage, loss, or liability as a result of using these maps or digital products. For more information about the digital map and GIS data please contact the City of Brighton's GIS Division.



Imagery provided by: 

