

.03.

Implementation



THIS PAGE INTENTIONALLY LEFT BLANK

RECOMMENDATIONS & NEXT STEPS

INTRODUCTION

This chapter provides a framework for the City to implement recommended improvements from the Downtown Public Realm Improvements Study. This plan should be implemented using a variety of funding sources and partnerships. The goal for full implementation is desired within eight years (by 2033) but many improvements can be realized in a shorter time frame.

The implementation matrix in this chapter should be used to track progress over-time. It is organized in three sections:

- 1. Short-Term Projects (2025-2028)** - these projects take less financial resources and are more geared toward design of larger projects, activation, wayfinding, and marketing programs to enhance the experience of Downtown Brighton. These should have immediate focus of resources and should include projects that can be accomplished within the next two years.
- 2. Medium-Term Projects (2025-2030)** - these projects will take longer to implement and include the construction of major streetscape elements, rebuilding of Main Street, and secondary phases of bicycle facilities and alleys. Design work should begin as soon as funds are available with the goal of accomplishing build-out within 4-5 years.
- 3. Long-Term Projects (2025-2033)** - these projects require ongoing support and/or should be completed as resources and funding become available.

The matrix and timelines suggested are guidelines for the city to assemble and prioritize resources. Items are subject to change at the city's discretion and dependent on funding and resources availability.

For the purposes of this document, cost implications as indicated on the following pages are shown with a number of "\$" rather than true numbers. Further study will be required on all recommended projects to determine true costs. The chart below is meant to give an idea of where a project may fall within the indicated ranges, with the caveats that these costs are subject to change based on timeline, material costs, inflation, design, planning, and many other variable factors.

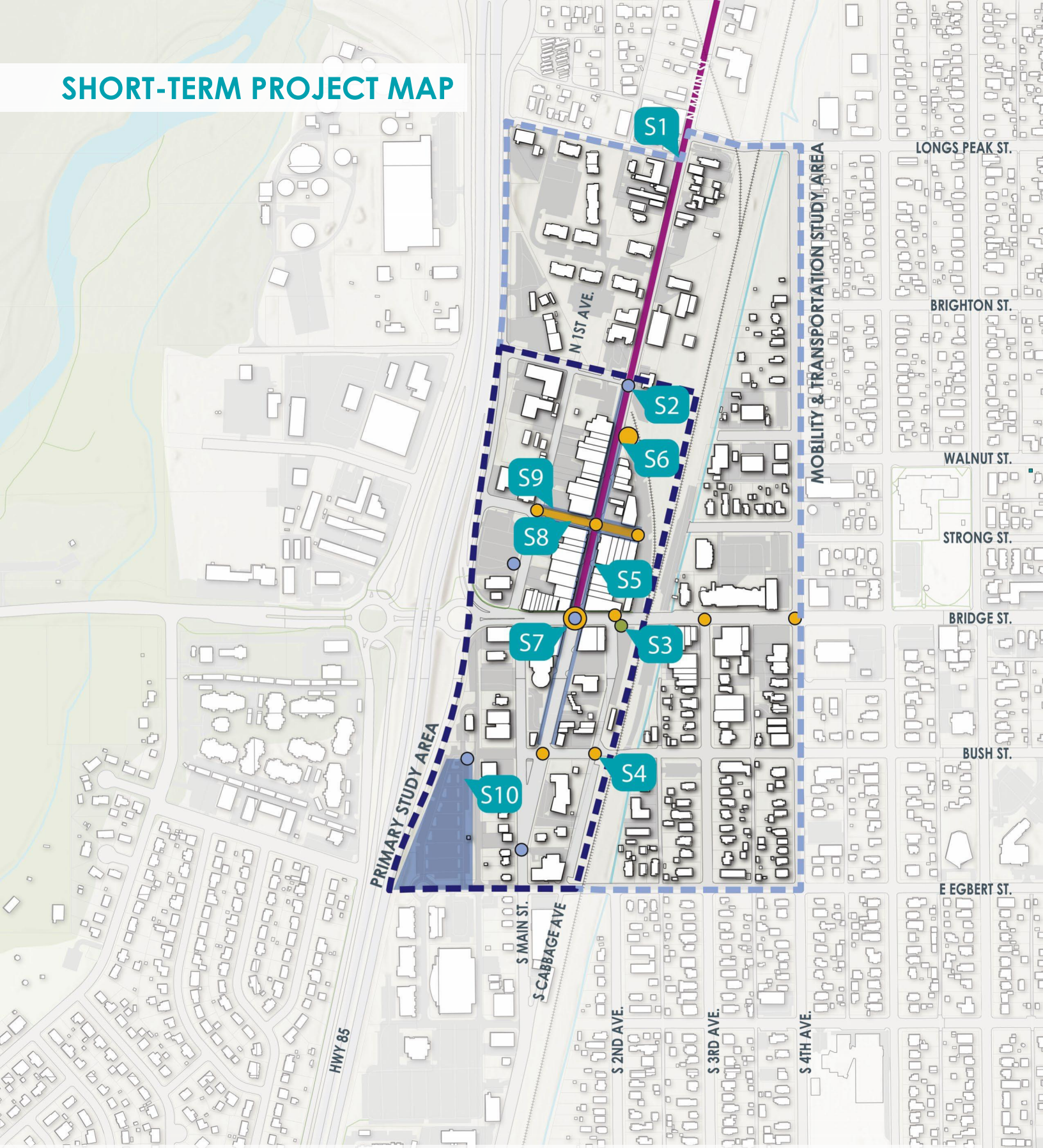
Cost Implication Symbol	Project Cost Estimate (subject to change)
\$	\$0-\$99,999
\$\$	\$100,000-\$249,999
\$\$\$	\$250,000-\$999,999
\$\$\$\$	\$1,000,000+

RECOMMENDATIONS & NEXT STEPS

SHORT-TERM PROJECTS (2025-2028)

PLAN REFERENCE	PROJECT DESCRIPTION	COST IMPLICATION
S1	Reduce truck traffic on Main Street - install signage routing trucks to existing truck routes and utilize enforcement to deter drivers from entering and driving on Main Street.	\$ In process
S2	Enhance wayfinding and signage - install wayfinding signage for parking locations, local businesses, Downtown amenities, etc.	\$\$ In process
S3	Install BRT stop on Main Street - locate and install short-term BRT stop on Main Street.	\$ In process
S4	Upgrade pedestrian crossings - create safer road crossings for pedestrians, including raised intersections and flashing beacons.	\$\$
S5	Remove parking from Main Street - install temporary barriers to prevent parking on Main Street, 2 blocks north of Bridge Street.	\$
S6	Expand Main Street public realm - furnish empty parking spaces from S5 with seating, tables, trash and recycling receptacles, bike racks, planters, and temporary lighting as planning & design take place for M1. Include safety upgrades to Cabbage and Main intersection by ensuring adequate sight distance for vehicles exiting Cabbage onto Main.	\$\$
S7	Safety improvements at Bridge St. and Main St. - upgrade existing intersection for safer pedestrian crossings, protected left turns, and additional signage for no right turns on red.	\$\$ Begin?
S8	Restripe Strong Street - utilize new striping patterns on Strong Street for parking changes.	\$ Complete
S9	Expand Strong Street public realm - enhance Strong Street connections from Cabbage Avenue and 1st Avenue to Main Street by using space gained from S8. Include safety upgrades to intersection with upgraded stop signs and high visibility crosswalks.	\$\$
S10	Parking agreement with RTD - coordinate parking agreement with RTD for use of existing Park-n-Ride lot to the public	\$

SHORT-TERM PROJECT MAP



LEGEND



STUDY AREA

PROJECT NUMBER
(REFERENCE CHART TO THE LEFT)



"SAFE" PROJECTS



"COHESIVE" PROJECTS



"SUSTAINABLE" PROJECTS



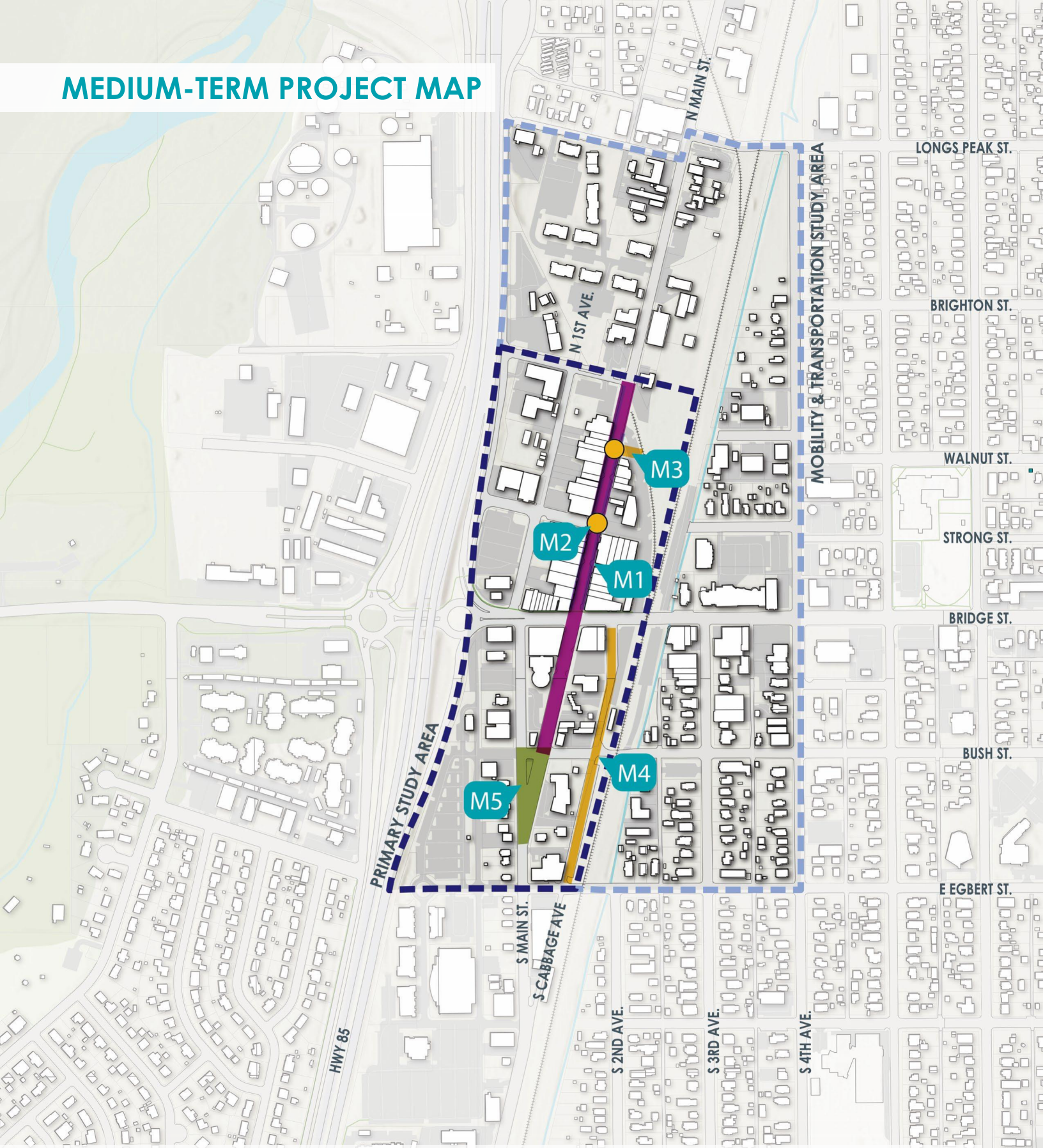
"APPEALING" PROJECTS

RECOMMENDATIONS & NEXT STEPS

MEDIUM-TERM PROJECTS (2025-2030)

PLAN REFERENCE	PROJECT DESCRIPTION	COST IMPLICATION
M1	Full rebuild of Main Street - complete reconstruction of 3 blocks of Main Street with curbless design, special paving, integrated landscaping, furnishings, etc.	\$\$\$\$
M2	Upgrade lighting at Strong St. and Main St. - evaluate and upgrade lighting as necessary to ensure adequate intersection viability.	\$\$
M3	Realign N. Cabbage Avenue and Main Street - ideally in conjunction with M1, realign connection from Cabbage Avenue to Main Street to create a safer intersection and provide more usable public space.	\$\$\$
M4	Improve South Cabbage Ave - coordinate with property owners to install (or improve existing) sidewalk on west side of Cabbage and realign Cabbage to create a one-way traffic pattern north of Egbert Street and south of Bridge Street.	\$
M5	Expand green space at 1st Ave / Main Street / Bush Street intersection - design and build out a new pocket park to create safer circulation and pedestrian spaces on the southern end of the study area.	\$\$ Begin?

MEDIUM-TERM PROJECT MAP



LEGEND



STUDY AREA



PROJECT NUMBER
(REFERENCE CHART TO THE LEFT)



"SAFE" PROJECTS



"COHESIVE" PROJECTS



"SUSTAINABLE" PROJECTS



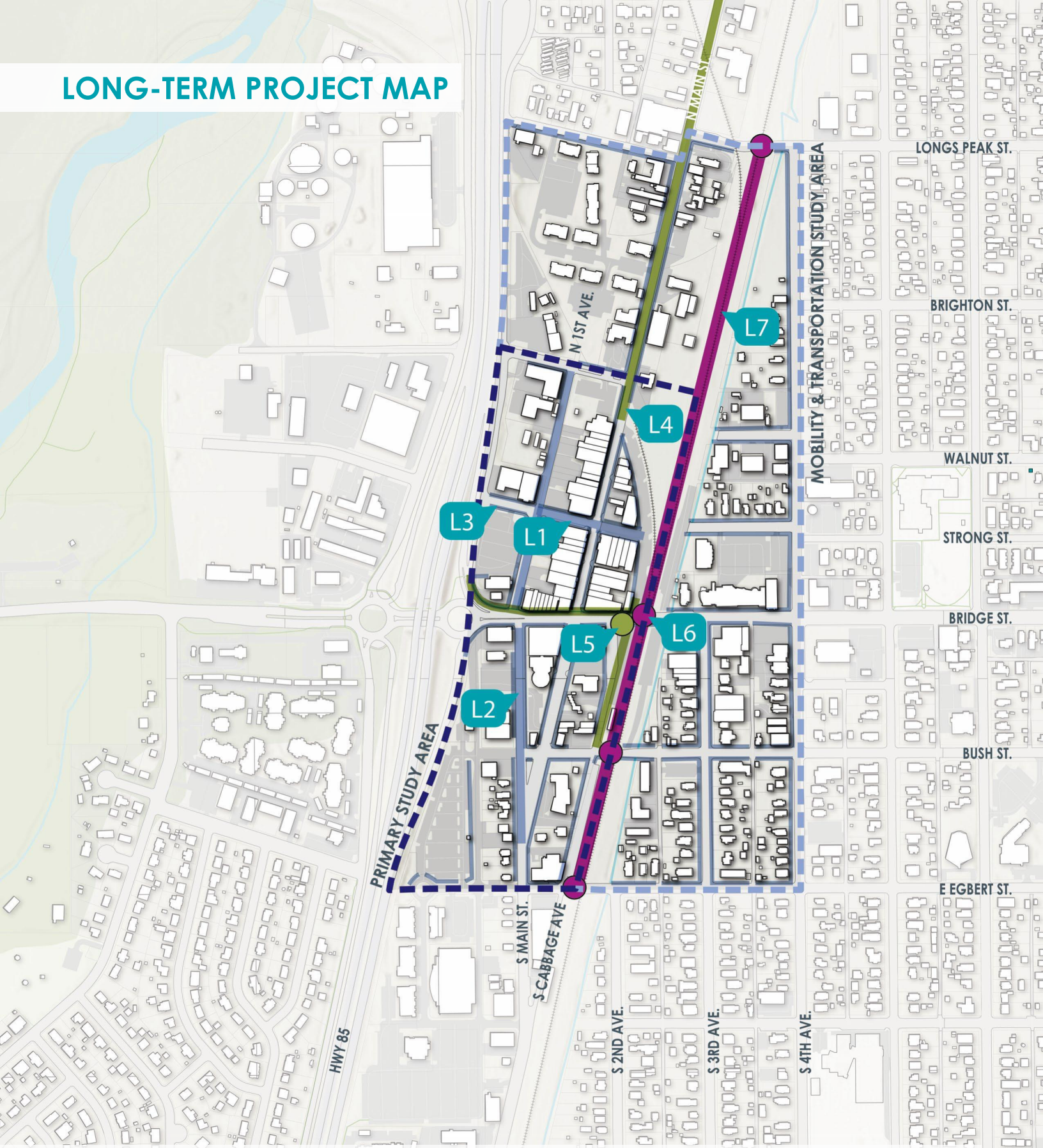
"APPEALING" PROJECTS

RECOMMENDATIONS & NEXT STEPS

LONG-TERM PROJECTS (2025-2033)

PLAN REFERENCE	PROJECT DESCRIPTION	COST IMPLICATION
L1	Rebuild Strong Street - rebuild Strong Street to better enhance connections to Main Street from Cabbage and 1st Avenues.	\$\$\$
L2	Upgrades to tertiary streets - enhance tertiary streets to create further cohesion with the Downtown district, utilizing wayfinding and signage, paving, lights, furnishings, etc.	\$\$
L3	Overhaul sidewalks in Downtown - build out remaining sidewalks on every block in Downtown to fit a City standard and create cohesion.	\$\$
L4	Provide safe & connected bike trails - build out safer bike trails that connect to the greater Front Range trail system throughout Downtown.	\$\$ In process
L5	Realign Cabbage Avenue at Bridge Street - realign Cabbage Avenue for a direct alignment across Bridge Street, with raised crossing for pedestrians.	\$\$\$\$
L6	Upgrade railroad crossing on Bridge Street - continue working with the Railroad to upgrade the existing crossing with safer walkways for pedestrians, lights, and quiet zones.	\$\$\$
L7	Implement a "Quiet Zone" for Railroad - coordinate with Railroad to create a quiet zone for Downtown, including infrastructure updates to all 9 crossings in Downtown.	\$\$\$\$ Begin?

LONG-TERM PROJECT MAP



LEGEND



STUDY AREA



PROJECT NUMBER
(REFERENCE CHART TO THE LEFT)



"SAFE" PROJECTS



"COHESIVE" PROJECTS



"SUSTAINABLE" PROJECTS



"APPEALING" PROJECTS