



City of Brighton Comprehensive Plan

DESIGNWORKSHOP

Fehr & Peers

 **SPIRIT**
A Montrose Environmental Company

 **DEVELOPMENT STRATEGIES®**

Meet Our Team

Design Workshop



Jessica Garrow
FAICP
Principal-in-Charge



Emily Burrowes
AICP, LEED GA
Project Manager



Christian Weber
Planner and
Economic Development Analyst



Alison Cotey
PLA, AICP, LEED GA
Comprehensive Plan Advisor



Brenda Rodriguez
Spanish Translation and
Engagement Support

Spirit Environmental



Conor Merrigan
LEED AP
Principal

Fehr & Peers



Carly Sieff
AICP
Project Manager



Lindsay Gips
Transportation Planner

Development Strategies



Andrew Pfister
AICP
Principal



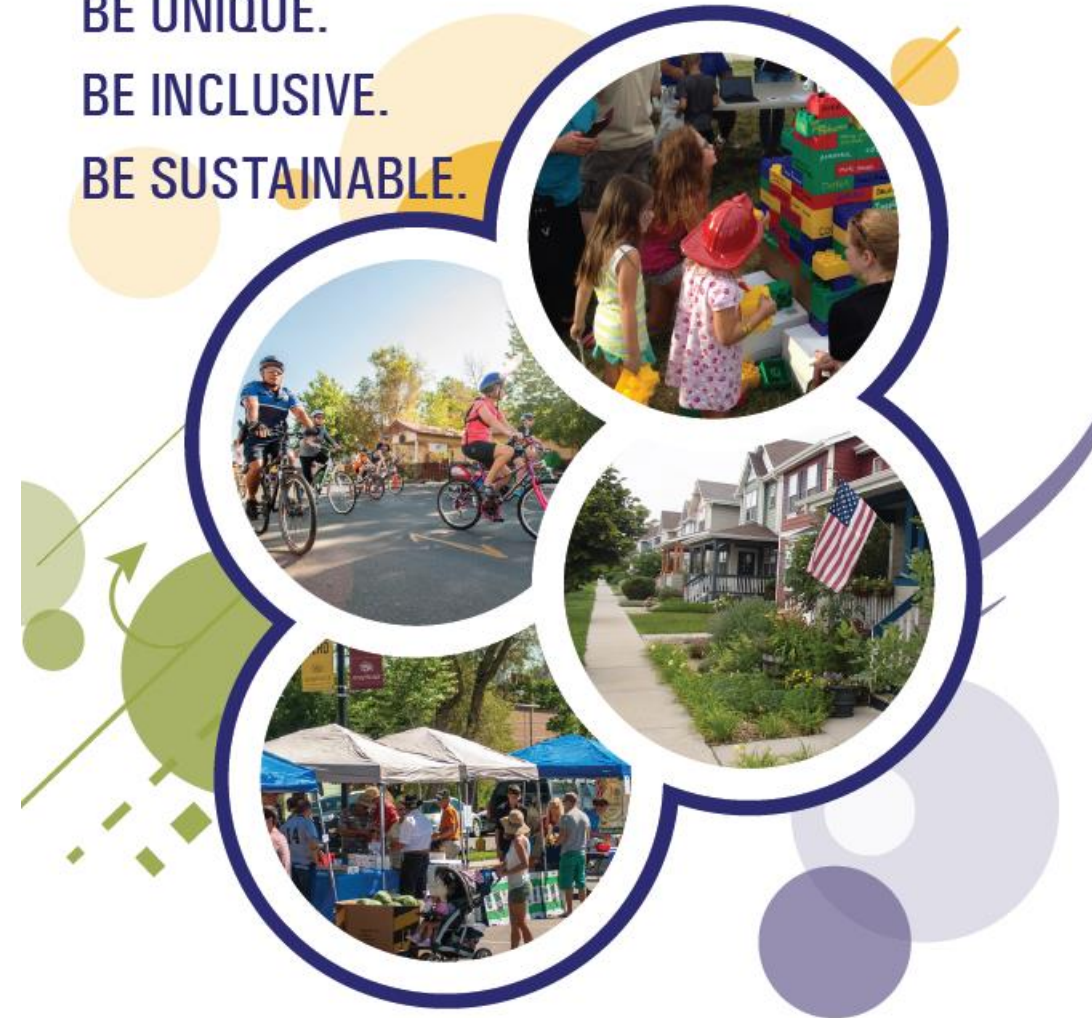
Catherine Kazmierczak
Urban Planner

Introduction

What is the Comprehensive Plan?

- Long-range policy document (20-30 years) that establishes a community's vision and framework for future growth, development, and preservation.
- Provides guidance on land use, housing, transportation, economic development, natural resources, and public services.
- Rooted in community values and designed to balance growth with quality of life, equity, sustainability, and resilience.
- Blueprint to coordinate investments, policies, and regulations across local government and regional partners.

BE UNIQUE.
BE INCLUSIVE.
BE SUSTAINABLE.



BE BRIGHTON



COMPREHENSIVE PLAN UPDATE
APRIL 2016



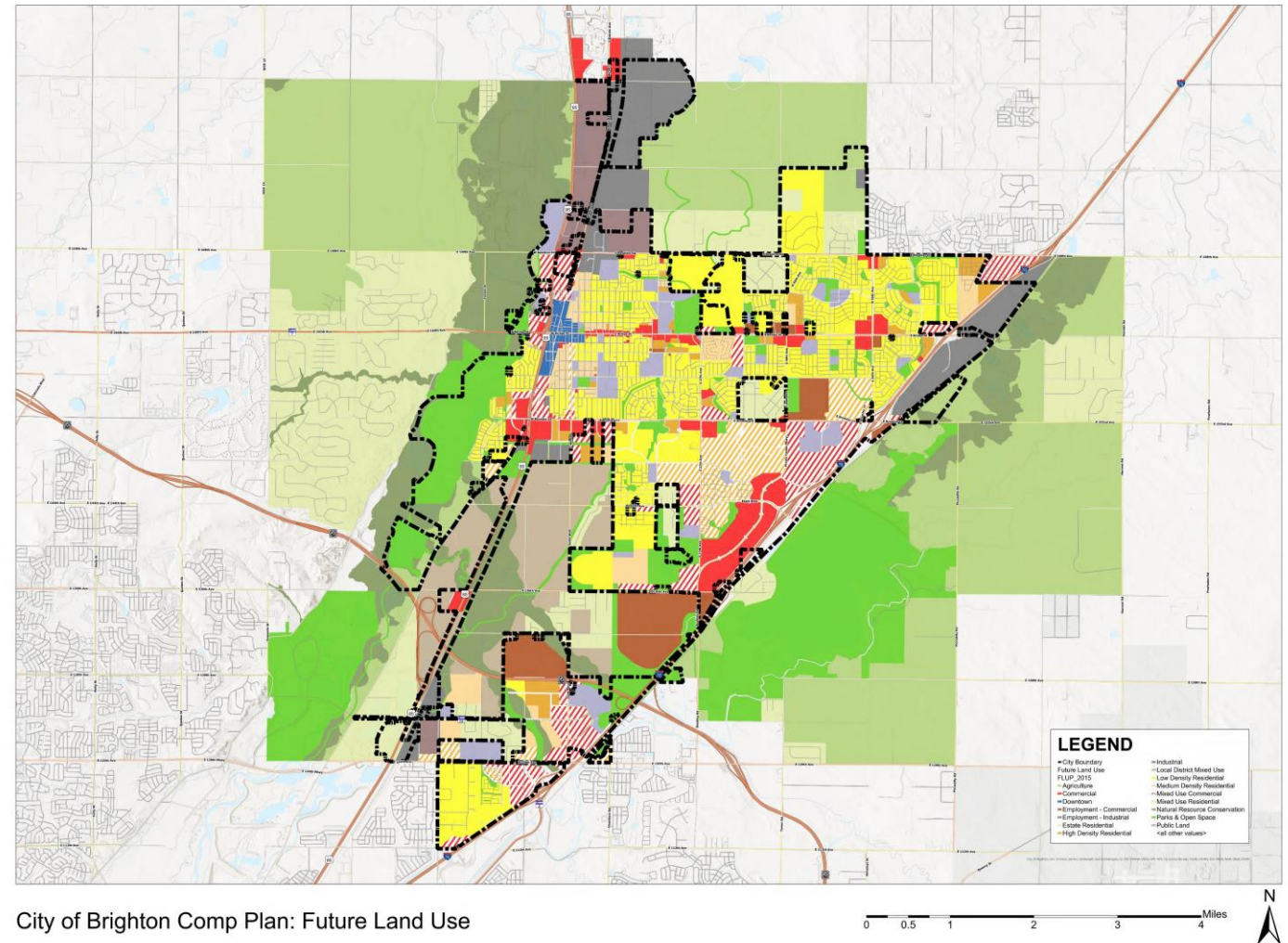
What is a Comprehensive Plan?

A Comprehensive Plan is...	A Comprehensive Plan is not...
A strategic guidebook to help guide citywide policy decisions and priorities	Zoning
A long-range tool for planning, legislation, financing, and action	A set of land use code standards
A reflection of the community's vision and goals	Detailed budget document
Required by State Statute	Specific regulations, requirements or ordinances

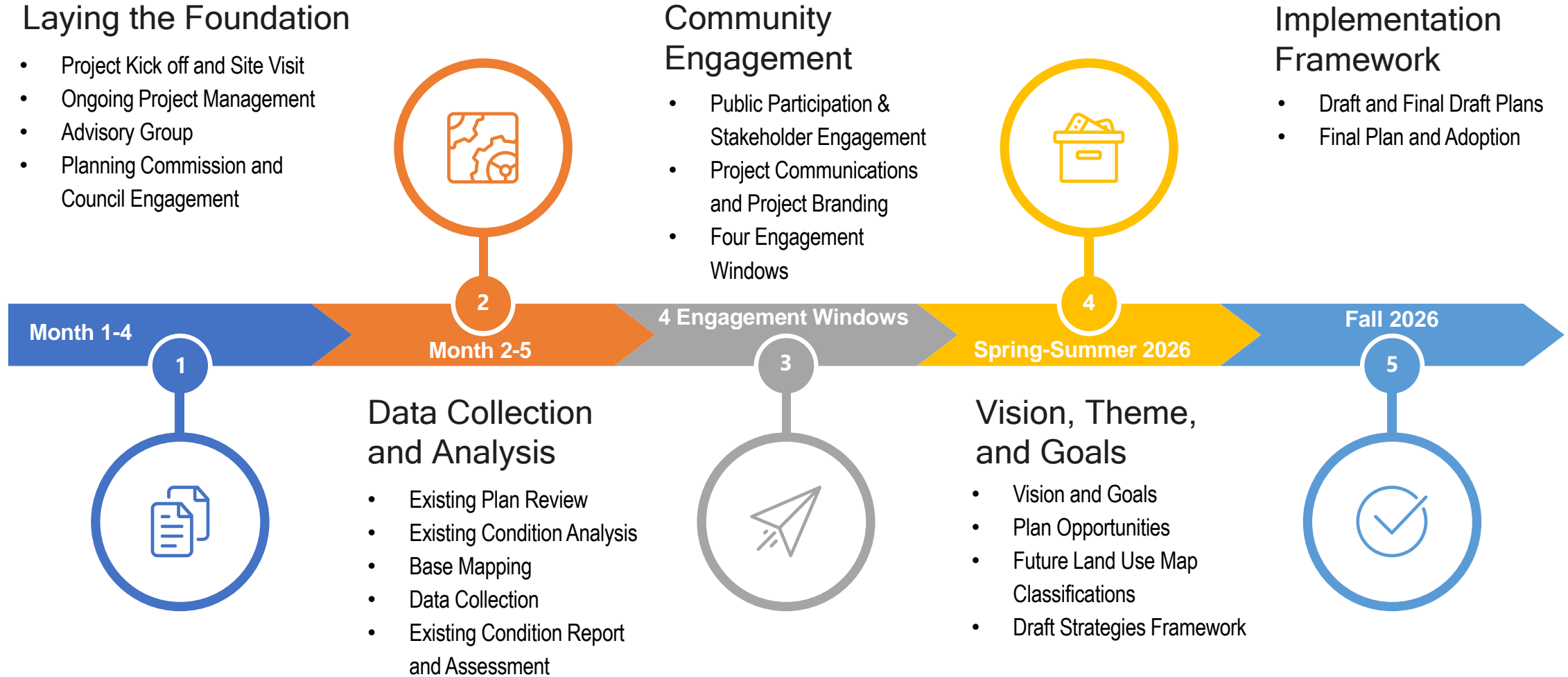
Question 1 - Introduction

**How are you currently using
your comprehensive plan?**

- Clear communication to ensure support and buy-in.
- Capture voices of the diverse community and needs of diverse geographies in a robust planning effort.
- Ensure feedback from all residents while also understanding their differing input to guide and direct future development.
- A clear vision, with an easy to use, accessible, data-driven and action-focused plan.



Project Approach



What We are Working on Now



Laying the Foundation



- Kick Off Meetings (Complete)
- Ongoing Project Management
- Engagement Planning



Data Collection and Analysis



- Existing Plan Review
- Data Needs
- Base Mapping
- Baseline Assessments

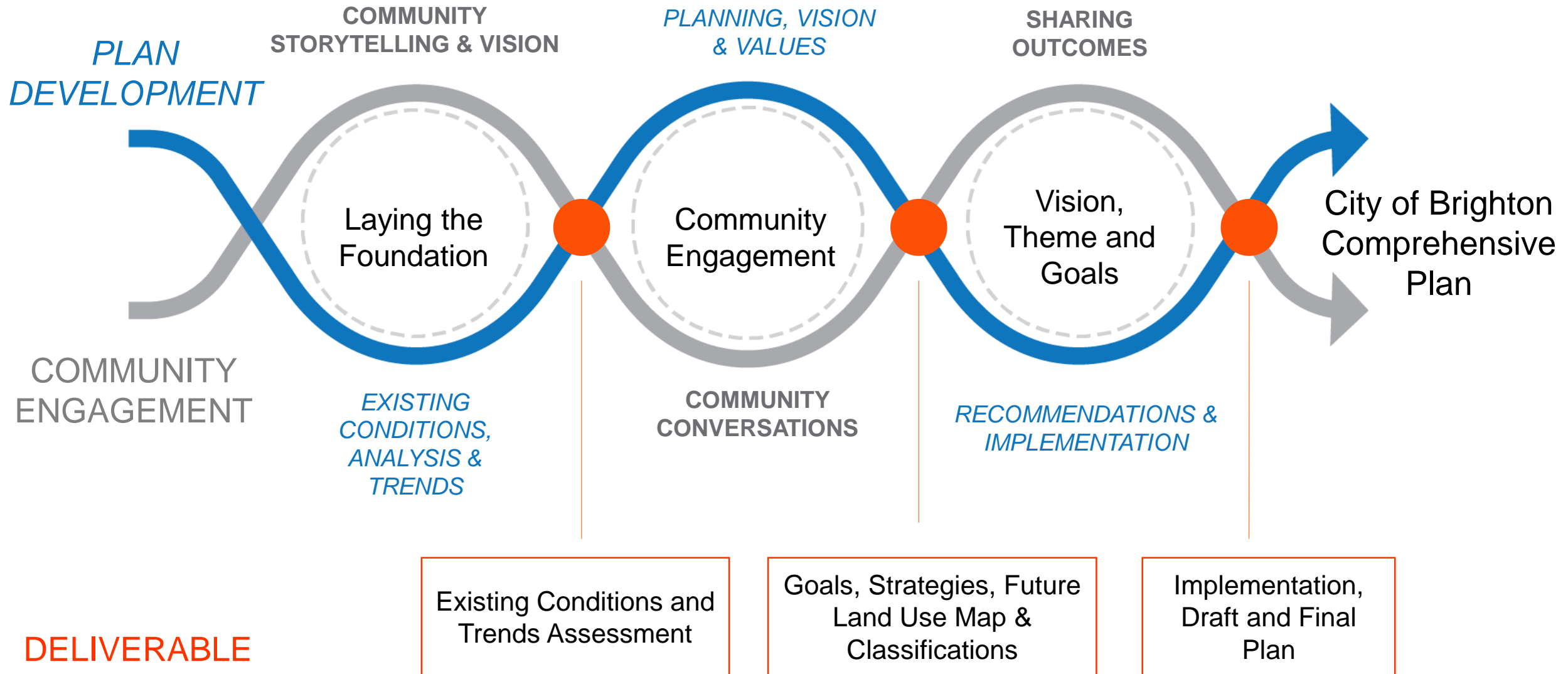
Question 2 - Introduction

What are you hoping to gain from this process?

Question 3 – Understanding Brighton

What are some of the current issues or trends influencing Brighton?

Weaving Community Engagement and Plan Process



Community Engagement Windows

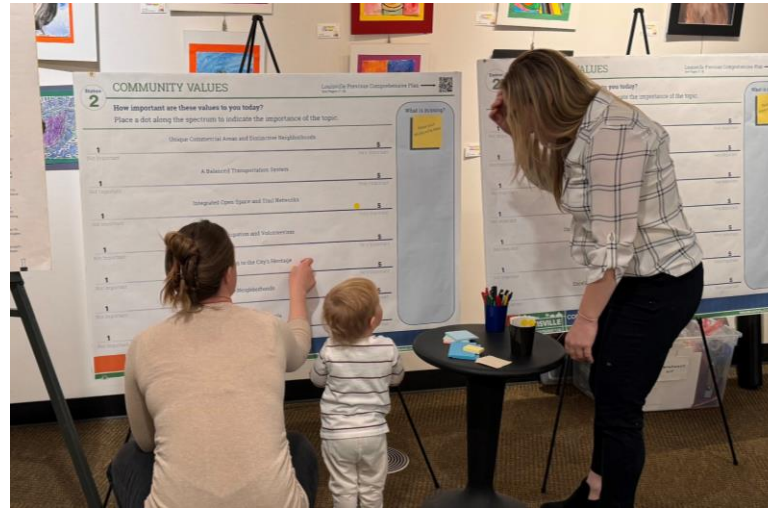
Engagement Window	What are the deliverables/outcomes ?	What are the engagement methods?
Engagement Window 1: Community Vision	<ul style="list-style-type: none"> Existing Conditions Report Public Participation and Communication Plan Engagement Reports 	<ul style="list-style-type: none"> Focus Groups (6) Statistically Valid Survey Community Workshop 1: Community Visioning Pop Up Events Planning Commission + City Council Meeting Advisory Group Meeting
Engagement Window 2: Growth Scenarios	<ul style="list-style-type: none"> Growth Scenarios Future Land Use Map 	<ul style="list-style-type: none"> Community Workshop 2: Growth Scenarios Design Charrettes Community Questionnaire Planning Commission + City Council Meeting Advisory Group Meeting
Engagement Window 3: Community Choices and Priorities	<ul style="list-style-type: none"> Vision, Values, Goals draft 	<ul style="list-style-type: none"> Community Workshop 3: Community Choices and Priorities Community Questionnaire Planning Commission + City Council Meeting Advisory Group Meeting
Engagement Window 4: Plan Sharing	<ul style="list-style-type: none"> TOC, 50% and 80% Draft Plan Implementation Strategy Framework Final Plan 	<ul style="list-style-type: none"> Community Presentation Planning Commission + City Council Meeting Advisory Group Meeting

How can you help Engagement?



Spread the Word!

Emails & Social Media



Host and Event!

Community Roadshows & Open Houses



Participate in a Meeting!

Focus Groups & Working Groups

Question 4 – Understanding Brighton

How could this progress to update the Comprehensive Plan support changes to serve you in your role on Planning Commission and City Council better?

How could it serve residents and the community better?



THANK YOU!