

Annex B: City of Brighton

This Annex consolidates information specific to the City of Brighton and goes into more detail about risk, capabilities, and mitigation strategies unique to that jurisdiction.

B.1 Mitigation Planning History and 2026 Update Process

The City of Brighton is situated in both Adams and Weld Counties. The City of Brighton had previously participated in the 2020 Adams County Hazard Mitigation Plan. The City committed to participating in the 2026 Adams County plan update and met all participation requirements. The city participated in the County’s multi-jurisdictional Hazard Mitigation Planning Committee (HMPC) and also brought together a Local Planning Team (LPT) to help collect data, identify and prioritize City mitigation actions and implementation strategies, and review annex drafts. The LPT noted no significant changes in City priorities since 2020.

Table B-1 City of Brighton Local Planning Team

Department or Stakeholder	Title
Office of Emergency Management	Emergency Manager
Finance Department	Finance Director
Utilities Department	Stormwater & Environmental Division, Utilities Director
Office of Sustainability	Sustainability Coordinator

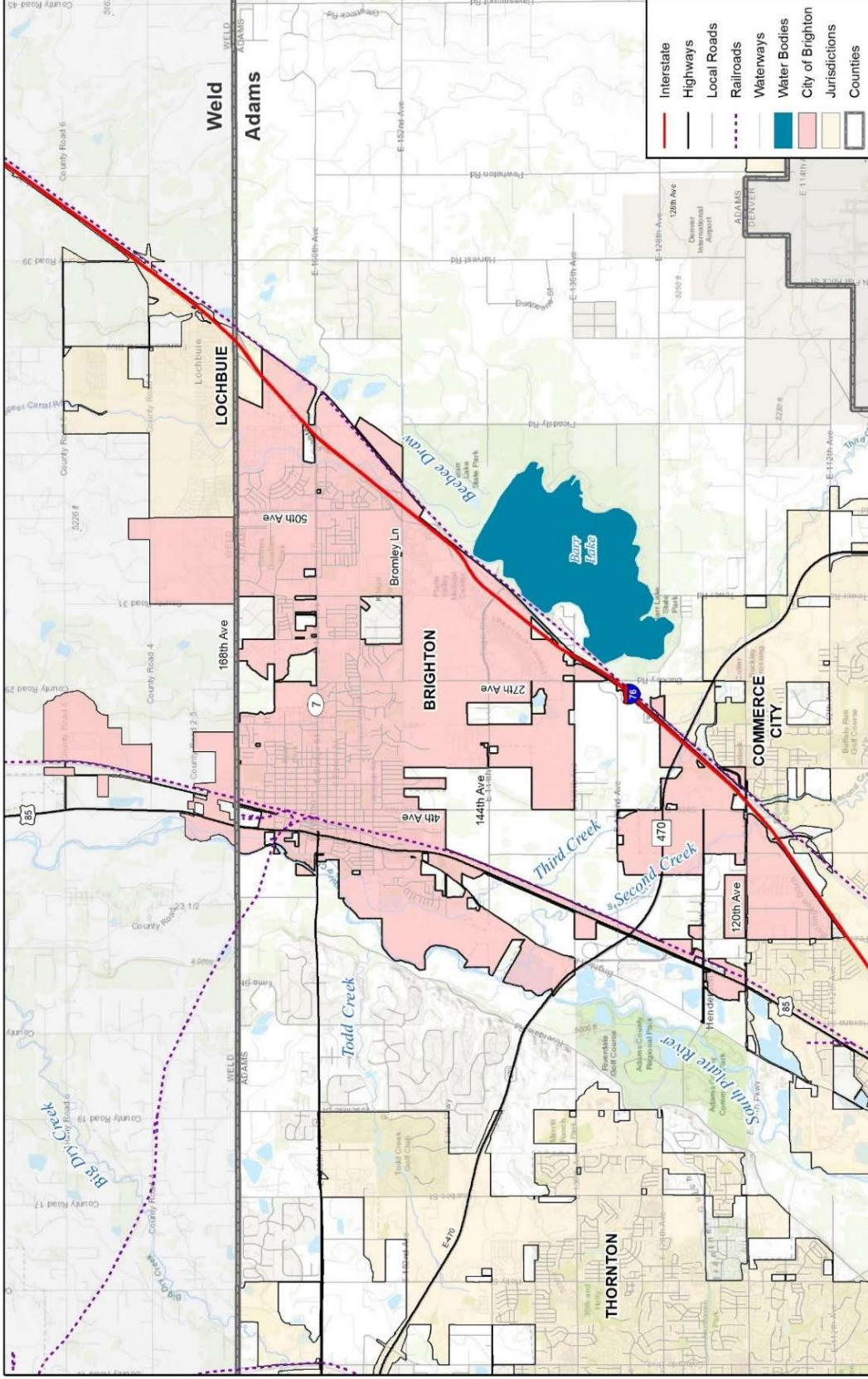
More details on the planning process and participating jurisdictions, service districts and stakeholders can be found in Section 3 of the Base Plan, along with the public’s role during the 2020 update.

B.2 Community Profile

The City of Brighton is located 20 miles north of downtown Denver and has a land area of 19.98 square miles. Incorporated in 1887, the city sits along the banks of the South Platte River and is situated in both Adams and Weld Counties. The opening of Denver International Airport in the 1990s led to many changes for the City of Brighton. Rapid and numerous annexations were necessary to accommodate the increase in population driven by increased accessibility. Once a small town with agricultural roots, the City of Brighton is now one of the fastest growing cities in Colorado.

Figure B-1 shows a map of the City of Brighton and its location within Adams and Weld Counties.

Figure B-1 Map of the City of Brighton



Map compiled 8/2024;
intended for planning purposes only.
Data Source: Adams County, CDOT



B.2.1 Demographics

This section was updated using data from the U.S. Census Bureau’s 2018-2023 American Community Survey (ACS) 5-Year Estimates, and the Colorado State Demography Office.

As of 2023, the U.S. Census Bureau estimated Brighton’s total population at 41,196. This constitutes a 5% increase in population since 2018 (39,054), and a 396% increase since 1970 (8,309). Table B below lists population estimates for the city alongside those of Adams County and the State of Colorado, showing how they have changed in the last five years.

Table B-2 Population Change, 2018-2023

Jurisdiction	2018	2019	2020	2021	2022	2023	Growth 2018-2023
Brighton	39,054	39,836	39,355	39,895	40,569	41,196	5%
Adams County	511,868	517,421	No Data	522,140	527,575	533,365	4%
Colorado	5,695,564	5,758,736	No Data	5,812,069	5,839,926	5,877,620	3%

Source: U.S. Census Bureau 2023 American Community Survey, www.census.gov/.

Table B and Table B show several key demographic and social characteristics of Brighton, how those characteristics have changed over the last five years, and how those characteristics compare to the rest of the County and the State.

Table B-3 Brighton Demographic and Social Characteristics, 2018-2023

Brighton	2018	2023	% Change
Population	39,054	41,196	5%
Median Age	32.9	34.4	5%
Total Housing Units	12,566	13,819	10%
Housing Occupancy Rate	97.4%	96.7%	-.7%
% of Housing Units with no Vehicles Available	4.6%	2.6%	-43%
Median Home Value	\$278,200	\$429,600	54.42%
Unemployment	3.1%	3.1%	0%
Mean Travel Time to Work (minutes)	31.3	30.6	-2.2%
Median Household Income	\$96,790	\$121,667	26%
Per Capita Income	\$30,466	\$40,248	32.12%
% of Individuals Below Poverty Level	11.2%	8.8%	-21.43%
% Without Health Insurance	9.8%	9.2%	-6.12%
# of Households	12,244	13,365	9.2%
Average Household Size	3.05	3.01	1.3%
% of Population Over 25 with High School Diploma	86.9%	87.2%	-1.31%
% of Population Over 25 with Bachelor’s Degree or Higher	21.1%	23.5%	11.42%
% with Disability	10.3%	9.1%	11.7%
Speaks English Less than “Very Well”	8.6%	7%	-18.6%

Source: U.S. Census Bureau 2023 American Community Survey , www.census.gov/.

Table B-4 Demographic and Social Characteristics Compared to the County and State (2023)

Demographic & Social Characteristics (as of 2023)	Brighton	County	Colorado
Median Age	34.4	35.1	37.5
Housing Occupancy Rate	96.70%	96.50%	91.40%
% of Housing Units with no Vehicles Available	2.60%	4.90%	5.10%
Median Home Value	\$429,600	\$458,400	\$502,200
Unemployment	3.10%	3.30%	2.60%
Mean Travel Time to Work (minutes)	30.6	29.7	25.5
Median Household Income	\$121,667	\$91,387	\$92,470
Per Capita Income	\$40,248	\$40,167	\$50,489
% of Individuals Below Poverty Level	8.80%	9.60%	5.90%
% Without Health Insurance	9.20%	8.90%	6.70%
Average Household Size	3.01	2.75	2.37
% of Population Over 25 with High School Diploma	87.20%	85%	92.80%
% of Population Over 25 with bachelor's degree or Higher	23.50%	28%	44.70%
% with Disability	10.30%	11.30%	11.70%
Speak English less than "Very Well"	7.00%	11.40%	5.40%

Source: U.S. Census Bureau 2023 American Community Survey, www.census.gov/.

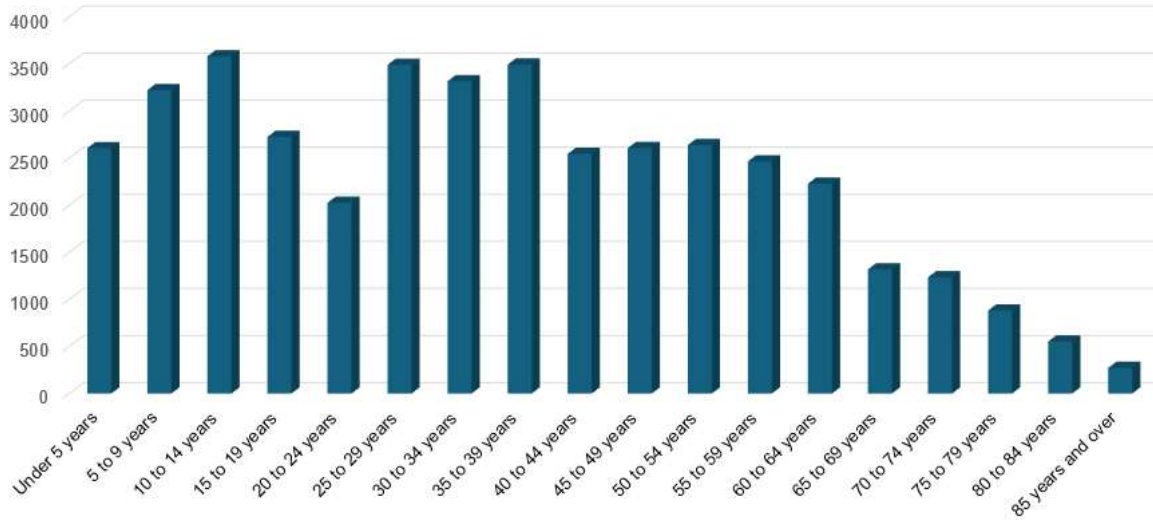
Table B-5 and Figure B-2 break down the demographics of the City by sex, race, and age.

Table B-5 Demographics by Race and Sex (2023)

Brighton	Population	%
Total Population	41,196	
Male	21,130	51.3%
Female	20,066	48.7%
White, not Hispanic	25,944	63%
Hispanic or Latino	15,869	38.5%
Black	2,000	4.9%
Asian	1,552	3.8%
American Indian and Alaska Native	1,858	4.5%
Native Hawaiian and Other Pacific Islander	106	0.3%
Some other race	10,462	25.4%
Two or more races	8,229	20%

Source: U.S. Census Bureau 2023 American Community Survey, www.census.gov/.

Figure B-2 City of Brighton Population Distribution by Age 2023



Source: U.S. Census Bureau 2023 American Community Survey www.census.gov/.

B.2.2 Housing and Economy

Error! Reference source not found. presents the 2023 American Community Survey estimates for types o f housing units in the City.

Table B-6 Types and Total Amounts of Housing Units in Brighton (2023)

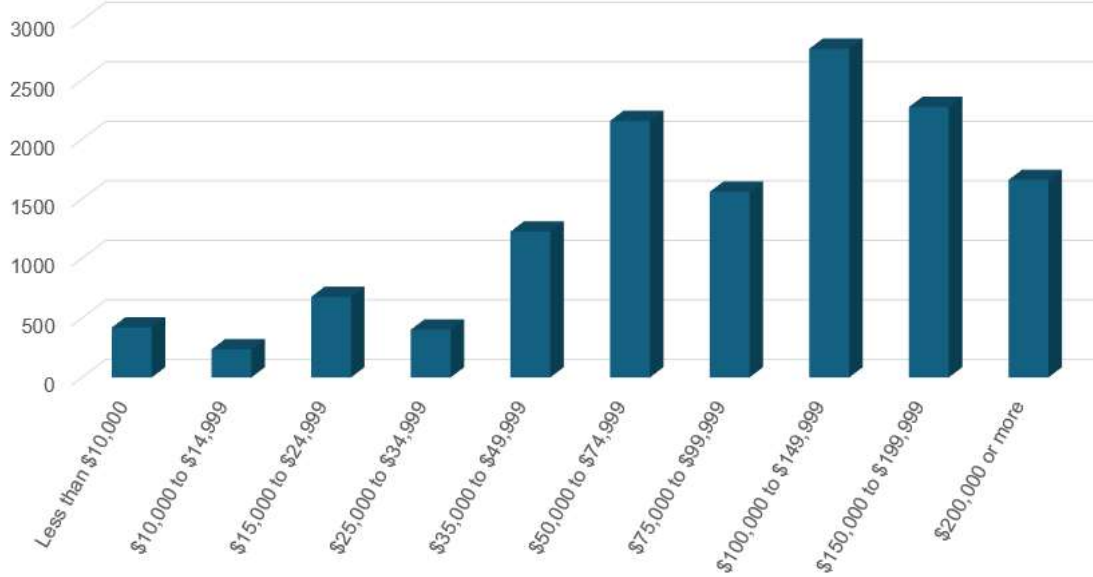
Type of housing units	Total	Percentage
Total housing units	13,819	
1-unit detached	9,780	70.77%
1-unit attached	1,014	7.3%
2 units	148	1.07%
3 or 4 units	201	1.45%
5 to 9 units	776	5.6%
10 to 19 units	592	4.3%
20 or more units	1,032	7.5%
Mobile home	276	2%
Boat, RV, van, etc.	0	0.00%

Source: U.S. Census Bureau 2023 American Community Survey, www.census.gov/.

As of 2023 the median home value in the City was \$429,600 a 70.8% increase since 2018. However, that remains below the average for Adams County (\$458,400) and the State (\$502,200). Brighton’s housing occupancy rate is 96.7%, well above the County and State averages.

The City’s per capita income in 2023 was \$40,248, a 32.12% increase since 2018, showing that income has not kept up with rising housing costs. The City’s per capita income is above that of Adams County as a whole (\$40,167) but well below the average for Colorado (\$50,489). Figure B- shows the distribution of household income in the City. Unemployment in 2023 was 3.10%, similar to the County average of 3.3%..

Figure B-3 City of Brighton Household Income Distribution (2023)



Source: U.S. Census Bureau 2023 American Community Survey, www.census.gov/.

B.3 Hazard Identification and Profiles

The City of Brighton’s Local Planning Team (LPT) identified the hazards that affect the community and summarized their geographic location, probability of future occurrence, potential magnitude or severity, and overall significance specific to the City, as shown in **Error! Reference source not found..** There are no hazards that are unique to Brighton.

Table B-7 City of Brighton Hazard Significance

Hazard	Geographic Location	Probability of Future Occurrence	Magnitude/Severity	Overall Significance
Tornado/Damaging Wind	Highly Likely	Extensive	Critical	High
Dam Incident	Occasional	Limited	Critical	High
Winter Weather	Highly Likely	Extensive	Limited	High
Hazardous Materials Incident	Highly Likely	Significant	Critical	High
Thunderstorms	Highly Likely	Extensive	Negligible	Medium
Flood	Occasional	Limited	Limited	Medium
Wildfire (Brush Fire)	Highly Likely	Limited	Negligible	Medium
Terrorism/Active Shooter	Occasional	Limited	Critical	Medium
Cyber Incident	Likely	Limited	Limited	Medium
Drought/Extreme Heat	Occasional	Extensive	Negligible	Low
Earthquake	Unlikely	Significant	Limited	Low
Soil Hazards	Unlikely	Limited	Limited	Low

<p>Geographic Location <u>Limited</u>: Less than 10% of planning area <u>Significant</u>: 10-50% of planning area <u>Extensive</u>: 50-100% of planning area</p> <p>Probability of Future Occurrences <u>Highly Likely</u>: Near 100% chance of occurrence in next year or happens every year. <u>Likely</u>: Between 10 and 100% chance of occurrence in next year or has a recurrence interval of 10 years or less. <u>Occasional</u>: Between 1 and 10% chance of occurrence in the next year or has a recurrence interval of 11 to 100 years. <u>Unlikely</u>: Less than 1% chance of occurrence in next 100 years or has a recurrence interval of greater than every 100 years.</p>	<p>Magnitude/Severity (Extent) <u>Catastrophic</u>: More than 50% of property severely damaged; shutdown of facilities for more than 30 days; and/or multiple deaths <u>Critical</u>: 25-50% of property severely damaged; shutdown of facilities for at least two weeks; and/or injuries and/or illnesses result in permanent disability <u>Limited</u>: 10-25% of property severely damaged; shutdown of facilities for more than a week; and/or injuries/illnesses treatable do not result in permanent disability <u>Negligible</u>: Less than 10% of property severely damaged, shutdown of facilities and services for less than 24 hours; and/or injuries/illnesses treatable with first aid</p> <p>Significance <u>Low</u>: minimal potential impact <u>Medium</u>: moderate potential impact <u>High</u>: widespread potential impact</p>
---	---

Information on past events can be found in the hazard profiles in Section 4.3 of the Base Plan.

B.4 Vulnerability Assessment

This section assesses Brighton’s vulnerability separate from that of the County as a whole. The following hazards are profiled separately in this annex

- Dam Incident
- Flood
- Hazardous Materials Incident
- Wildfire

The following hazards are not profiled, as the risk does not vary significantly from that of the County overall, or vulnerability data is difficult to compile or estimate below county level:

- Cyber Incident
- Drought/Extreme Heat
- Earthquake
- Soil Hazards
- Terrorism/Active Shooter
- Thunderstorm
- Tornado/Damaging Wind
- Winter Weather

For more information about how hazards affect Adams County, see Section 4 (Risk Assessment) of the Base Plan.

B.4.1 Community Assets

Error! Reference source not found. shows the total number of improved parcels, properties, and their improvement and content values for the City of Brighton. See Section 4.2 of the Base Plan for a discussion of the methodology used.

Table B-8 City of Brighton Property Exposure

Property Type	Parcel Count	Building Count	Improved Value	Content Value	Total Value
Agricultural	14	31	\$3,500,287	\$3,500,287	\$7,000,574
Commercial	532	681	\$952,570,531	\$952,570,531	\$1,905,141,062
Exempt	176	536	\$647,791,931	\$647,791,931	\$1,295,583,862

Property Type	Parcel Count	Building Count	Improved Value	Content Value	Total Value
Industrial	25	35	\$102,602,681	\$153,904,022	\$256,506,703
Residential	11,912	13,929	\$5,691,026,968	\$2,845,513,484	\$8,536,540,452
Total	12,659	15,212	\$7,397,492,398	\$4,603,280,255	\$12,000,772,653

Source: Adams County GIS/Assessor's Office, WSP analysis.

Error! Reference source not found. lists summary information about the 115 critical facilities and other community assets identified by the City's LPT as important to protect or that provide critical services in the event of a disaster. These facilities are mapped in Figure B-. For additional information on the definitions behind each critical facility category, source, and other details refer to Section 4.3.2 of the Base Plan.

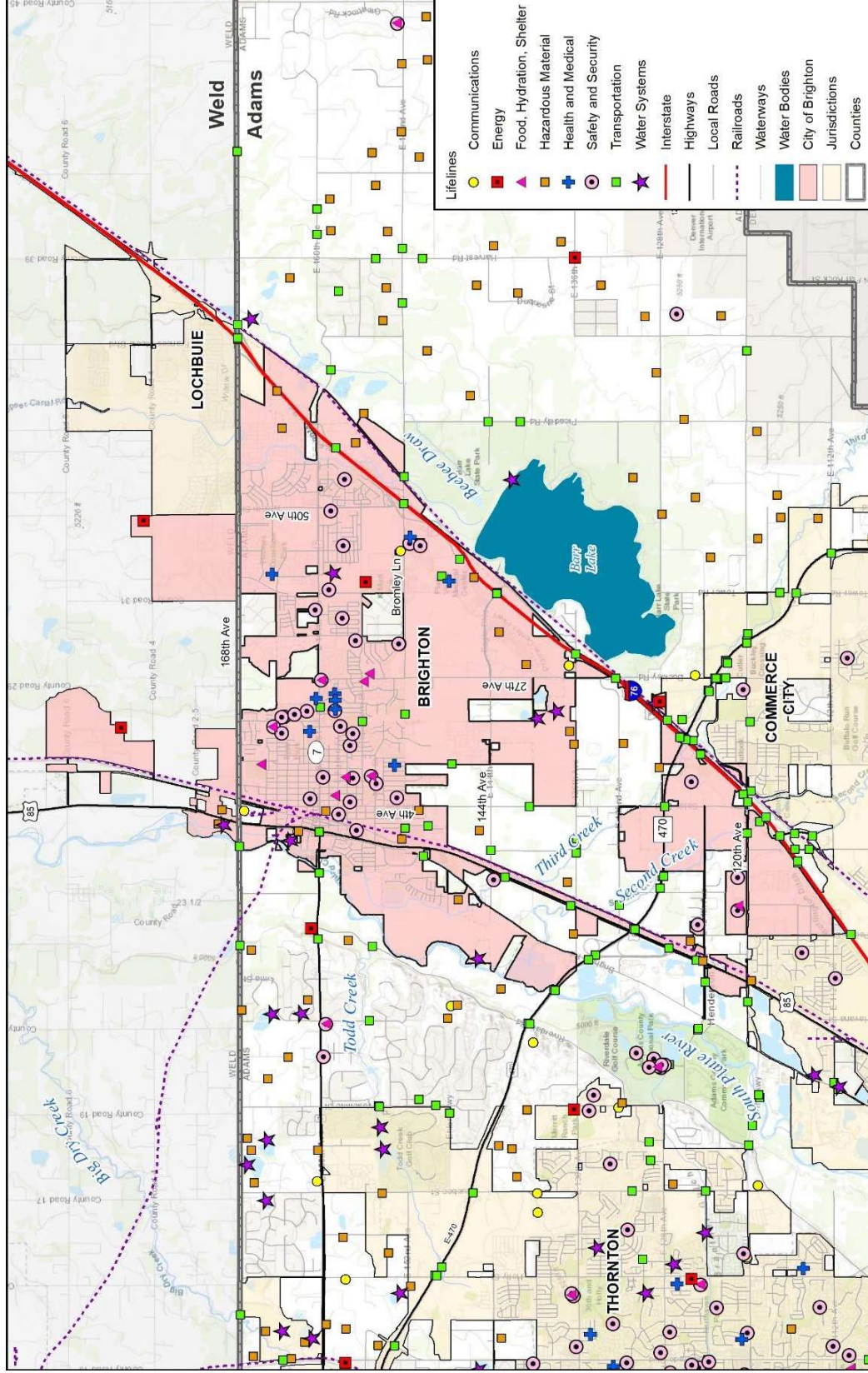
Table B-9 City of Brighton Critical Facilities and Infrastructure Summary

Lifeline	Facility Type	Count
Communications	Communication Tower	1
Energy	Electric Substation	2
	Substation	2
Food, Hydration, Shelter	EO Emergency Shelter	9
Hazardous Material	RMP Facility	2
	Tier II Facility	14
	Assisted Living	3
	Dialysis Center	1
	Medical Center	1
	Nursing Home	4
Safety and Security	Fire Station	3
	Government Facility	5
	Law Enforcement	2
	Local EOC	1
	Preschool	1
	Private School	3
	School	19
Transportation	Bridge Non-Scour Fair Condition	23
	Bridge Non-Scour Good Condition	11
	Helicopter - Medical	1
Water Systems	Dam Low Hazard	4
	Water Storage Tank	1
	Water Treatment	1
	WWTP	1
Total		115

Source: Adams County GIS/Assessor's Office, WSP analysis.



Figure B-4 City of Brighton Critical Facilities and Infrastructure



Map compiled 9/2024;
intended for planning purposes only.
Data Source: Adams County, CDOT, Denver Water,
EPA, HIFLD, Division of Water Resources (DWR),
National Bridge Inventory (NBI), SERC



B.4.2 Dam Incident

Overall, the LPT felt the City’s risk from a dam failure or incident is **High**, due to the large number of people and critical facilities potentially at risk compared to the County as a whole.

Error! Reference source not found.10 (excerpted from Table 4-13 in the Base Plan) lists the primary dams in and immediately upstream of the City of Brighton. These dams are mapped in Figure 4-5 in the Base Plan and their potential dam inundation extents can be found in Appendix H.

Table B-10 Dams of Concern for the City of Brighton

Dam Name	Waterway	Dam Type	Storage Capacity (Acre-Feet)	Emergency Action Plan?	Primary Purpose	Hazard Rating
Cherry Creek Dam	Cherry Creek	Earth	134,470	Yes	Flood Control	High
Dunes	South Platte River-Os	Earth	5,192	Yes	Water Supply	High
Smith Irrigation	Todd Creek	Earth	257	Yes	Fish & Wildlife Pond	High
Marshall	Brantner Gulch-Tr	Earth	98	Not Required	Flood Control	Low

Source: USACE National Inventory of Dams 2018, WSP analysis

Table B and Table B calculate the people, property, and critical facilities potentially at risk of dam inundation. Based on this analysis, there are 15,440 people and 6,114 critical facilities potentially at risk of inundation from a dam failure or incident. Projected losses total more than \$141B, although it is important to note that any single dam incident would be unlikely to affect all parcels potentially at risk, with the possible exception of Cherry Creek Dam. A major dam failure could also impact several major transportation corridors, including E-470, and US 85, potentially disrupting traffic in the area.

Table B-11 City of Brighton Parcels and Exposure in Dam Inundation Zones

Property Type	Improved Parcel Count	Building Count	Improved Value	Estimated Content Value	Total Value	Buildings At Risk %	Population at Risk
Agricultural	3	4	\$1,537,803	\$1,537,803	\$3,075,606	12.9%	0
Commercial	422	512	\$580,726,516	\$580,726,516	\$1,161,453,032	75.2%	0
Exempt	102	335	\$245,553,723	\$245,553,723	\$491,107,446	62.5%	0
Industrial	23	33	\$60,669,218	\$91,003,827	\$151,673,045	94.3%	0
Residential	4,319	5,230	\$1,747,396,847	\$873,698,424	\$2,621,095,271	37.5%	15,440
Total	4,869	6,114	\$2,635,884,107	\$1,792,520,293	\$4,428,404,400	40.2%	15,440

Source: Adams County GIS/Assessor’s Office, WSP analysis.

Table B-12 City of Brighton Critical Facilities in Dam Inundation Zones

FEMA Lifeline	Critical Facility Type	Total
Food/Water/Shelter	EO Emergency Shelters	5
	Gravel Mines/Ponds	3
	Wastewater Treatment Plant	1
Hazardous Material	Environmental Hazard Superfund	1
	Environmental Hazard Toxic Site	1
	HazMat EO Tier II Sites	10
Health and Medical	Assisted Living	1
	Nursing Home	1

FEMA Lifeline	Critical Facility Type	Total
Safety and Security	Fire Stations	1
	Government Facilities	6
	Landfills/Govt. Services	3
	Schools	11
TOTAL		45

Source: Adams County GIS/Assessor’s Office, WSP analysis.

Mapping of potential dam inundation areas are located in Appendix H: Dam Inundation Data, which is not available for public release.

B.4.3 Flood

Overall, the LPT felt the City’s flood risk is **Medium**, due to the lower numbers of people, property, and critical facilities potentially at risk compared to the County as a whole.

The major drainageway in the Brighton area is the South Platte River, which runs along the City’s west side. Major tributaries that cross through the City include Second Creek and Third Creek (which are in the process of being studied for flood hazards by the Mile High Flood District). Barr Lake and Beebe Draw border the east side of the City.

Figure B- shows the mapped floodplains in the latest version of FEMA’s National Flood Hazard Layer (NFHL). Figure B- shows the Colorado Water Conservation Board (CWCB) flood hazards within the City of Brighton. The NFHL and CWCB maps show both the 1% annual chance (100-year) and the 0.2% annual chance (500-year) flood events, as described in more detail in Section 4.3.5 of the Base Plan.

Table B and Table B summarize the people, property, and critical facilities located in the 100-year and 500-year floodplains. Based on this analysis, there are 83 people, 34 properties with a potential for \$5.5M worth of property damage, and 5 critical facilities potentially at risk of a 1% annual chance flood. For a 0.2% annual chance flood, that vulnerability is 9 people and \$6.5M worth of property damage in addition to what would be affected by the 1% flood. As with Dam Failure/Incident above, several critical transportation corridors could be disrupted.

Table B-13 City of Brighton Parcels and Exposure in Flood Zones

Flood Event	Parcel Type	Total Improved Parcels	Improved Value	Content Value	Total Value	Loss Estimate (25% of Total Value)	Population
100-year	Exempt	2	\$103,909	\$103,909	\$51,955	\$51,955	0
	Residential	28	\$9,599,000	\$4,799,500	\$14,398,500	\$3,599,625	83
	Commercial	4	\$3,811,894	\$3,811,894	\$7,623,788	\$1,905,947	0
100-year Total		34	\$13,514,803	\$8,715,303	\$22,074,243	\$5,557,527	83
500-year	Exempt	2	\$392,093	\$392,093	\$784,186	\$196,047	0
	Residential	3	\$1,545,000	\$1,545,000	\$3,090,000	\$772,500	9
500-year Total		93	\$1,937,093	\$1,937,093	\$3,874,186	\$968,547	9
GRAND TOTAL		127	\$15,451,896	\$10,652,396	\$25,948,429	\$6,526,074	92

Source: Adams County GIS/Assessor’s Office, WSP analysis.

Table B-14 City of Brighton Critical Facilities in Flood Zones

Flood Event	FEMA Lifeline	Critical Facility Type	Total
100-year	Food/Water/Shelter	Gravel Mines/Ponds	1
	Transportation	Minor Bridge	4
100-Year Total			5
500yr	---	---	-
500-Year Total			0
GRAND TOTAL			5

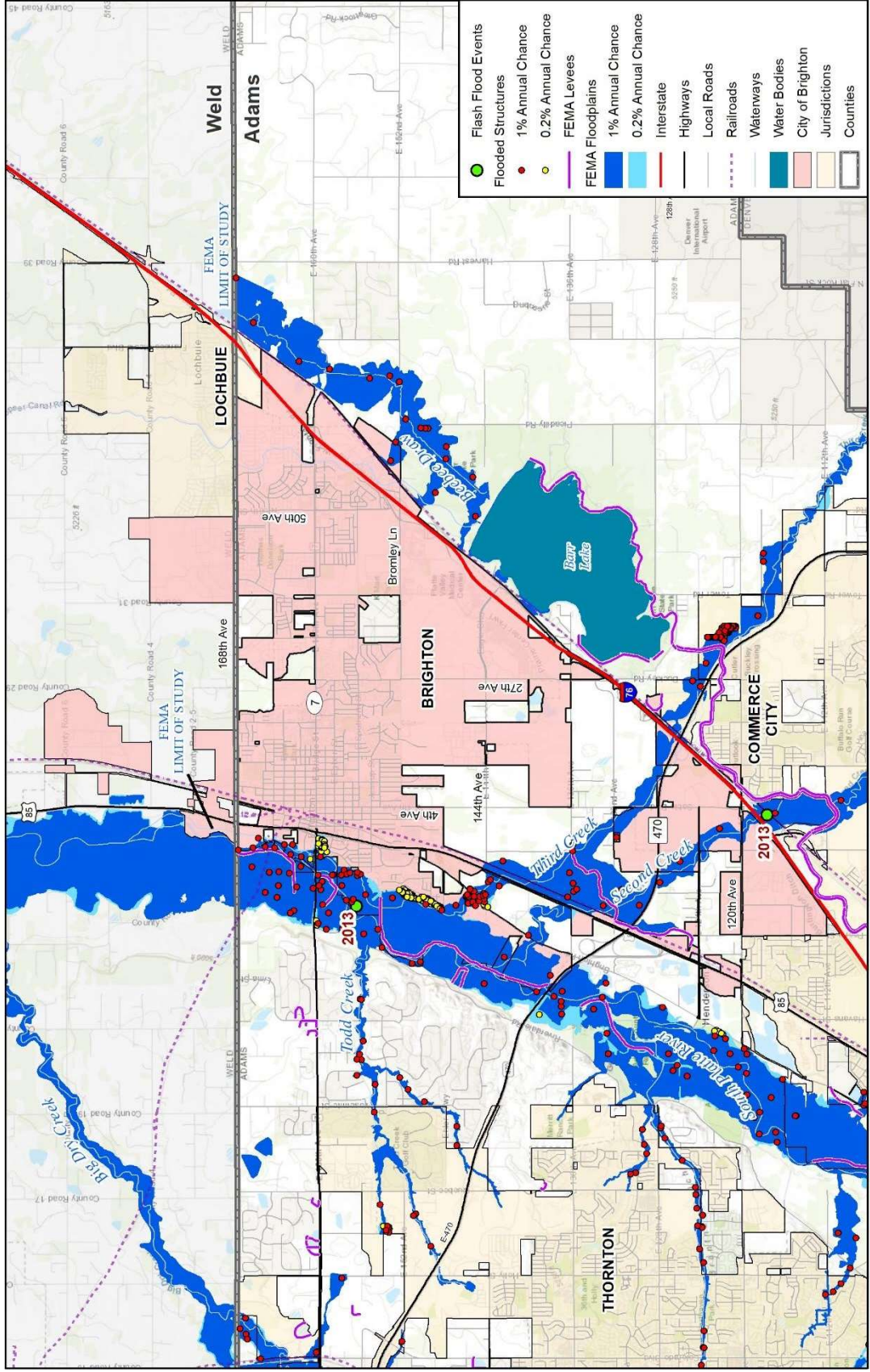
Source: Adams County GIS/Assessor's Office, WSP analysis.

National Flood Insurance Program Policy Analysis

Brighton has participated in the National Flood Insurance Program (NFIP) since November 16, 1977. NFIP insurance data shows that as of June 2024, there were 9 flood insurance policies in force in the City with \$1,730,000 of coverage. This is a decrease of 4 policies since 2019. There have been three historical claims for flood losses totaling \$3,293. There are no repetitive or severe repetitive loss structures as defined by the NFIP as of June 2024. The City of Brighton does not participate in the Community Rating System (CRS) program.



Figure B-5 FEMA Special Flood Hazard Areas in the City of Brighton

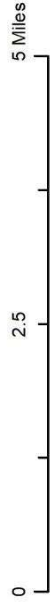
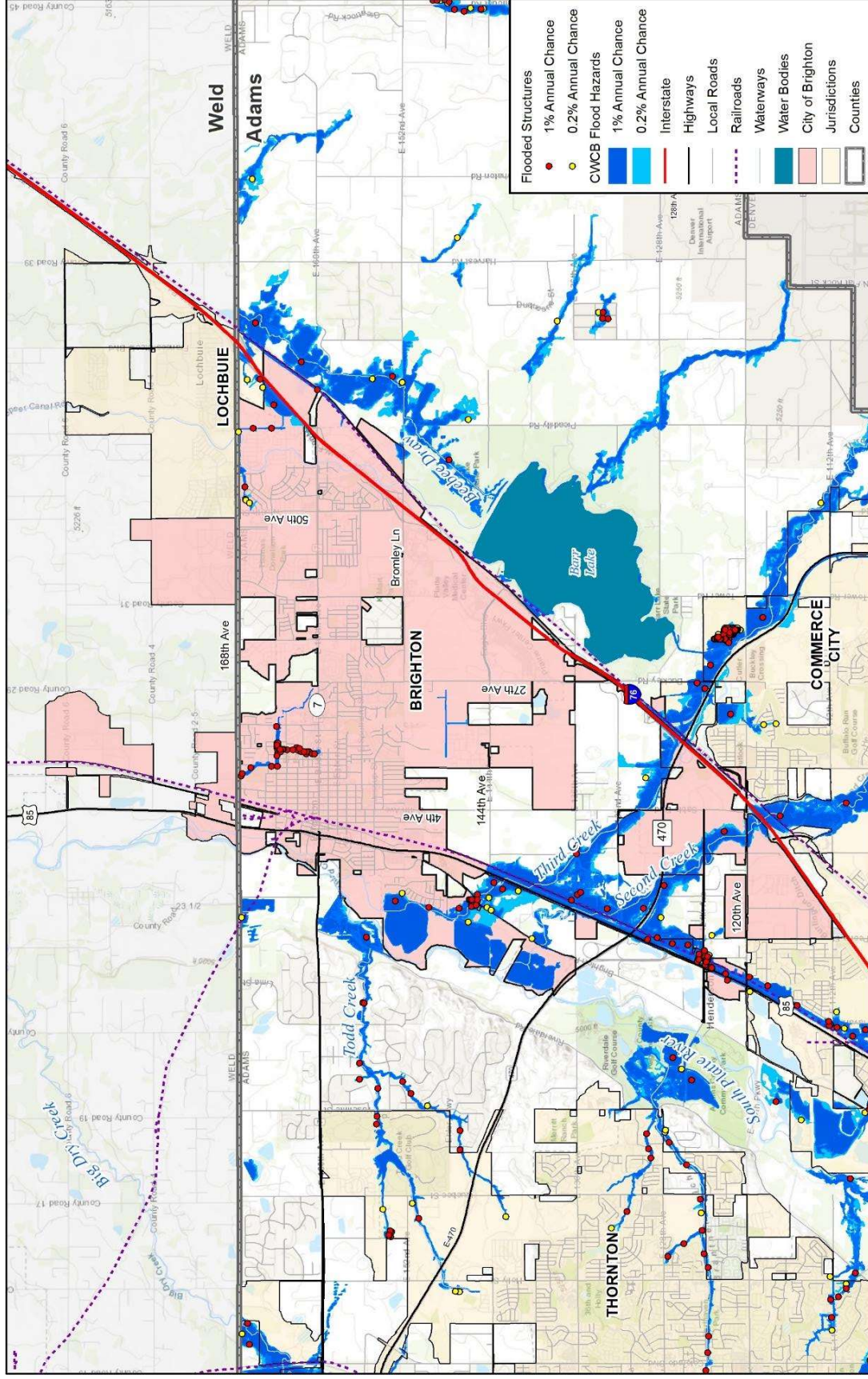


Map compiled 9/2024;
intended for planning purposes only.
Data Source: Adams County, CDOT, NCEI Storm Events,
FEMA NFHL: Adams Effective 12/2/2021, Weld Effective 11/30/2023





Figure B-6 City of Brighton Colorado Water Conservation Board Flood Hazards in the City of Brighton



Map compiled 9/2024;
intended for planning purposes only.
Data Source: Adams County, CDOT,
Colorado Water Conservation Board



B.4.4 Hazardous Materials Incident

Overall, the LPT has rated Brighton’s risk from Hazardous Materials Incidents **High**. The National Response Center (NRC) records 96 hazardous materials incidents in or near the City of Brighton from 1990 through 2024; as noted in Section 5.3.13 of the Base Plan, this likely excludes a large number of unreported minor spills. This constitutes 9.5% of the 1,009 hazardous materials incidents reported countywide during the same time frame, and averages out to roughly 2.8 incidents per year. As noted in Section 5.3.13, only around 10% of reported hazardous materials incidents result in injuries, fatalities, or evacuations in Adams County.

As of 2024, there are 14 EPA Tier II facilities and 2 Risk Management Plan (RMP) facilities located in the City.

B.4.5 Wildfire

Overall, the LPT felt Brighton’s risk from wildfires is **Medium**, due to the prevalence of brush fires in the area.

Table B and Table B calculate the people, property, and critical facilities located in the moderate, high, and highest WUI risk areas. Based on this analysis, there are 354 people, \$2.25M worth of property, and 3 critical facilities located in moderate risk WUI areas. High risk WUI areas include 384 people \$8.9M worth of property and no critical facilities. Highest risk had 230 people and \$4.2M worth of property and no critical facilities.

Table B-15 City of Brighton Parcels and Exposure in Wildland Urban Interface (WUI) Zones

WUI Risk Zone	Parcel Type	Improved Parcels	Improved Value	Content Value	Total Value	Population at Risk
Moderate	Exempt	2	\$67,613,923	\$67,613,923	\$135,227,846	0
	Residential	120	\$59,879,011	\$29,939,506	\$89,818,517	354
High	Exempt	3	\$645,125	\$645,125	\$1,290,250	0
	Residential	126	\$59,043,860	\$29,521,930	\$88,565,790	384
Highest	Exempt	1	\$7,220	\$7,220	\$14,440	0
	Residential	77	\$28,306,313	\$14,153,157	\$42,459,470	230
TOTAL		329	\$215,495,452	\$74,334,551	\$357,376,313	968

Source: Adams County GIS/Assessor’s Office, WSP analysis.

Table B-16 City of Brighton Critical Facilities in Wildland Urban Interface (WUI) Zones

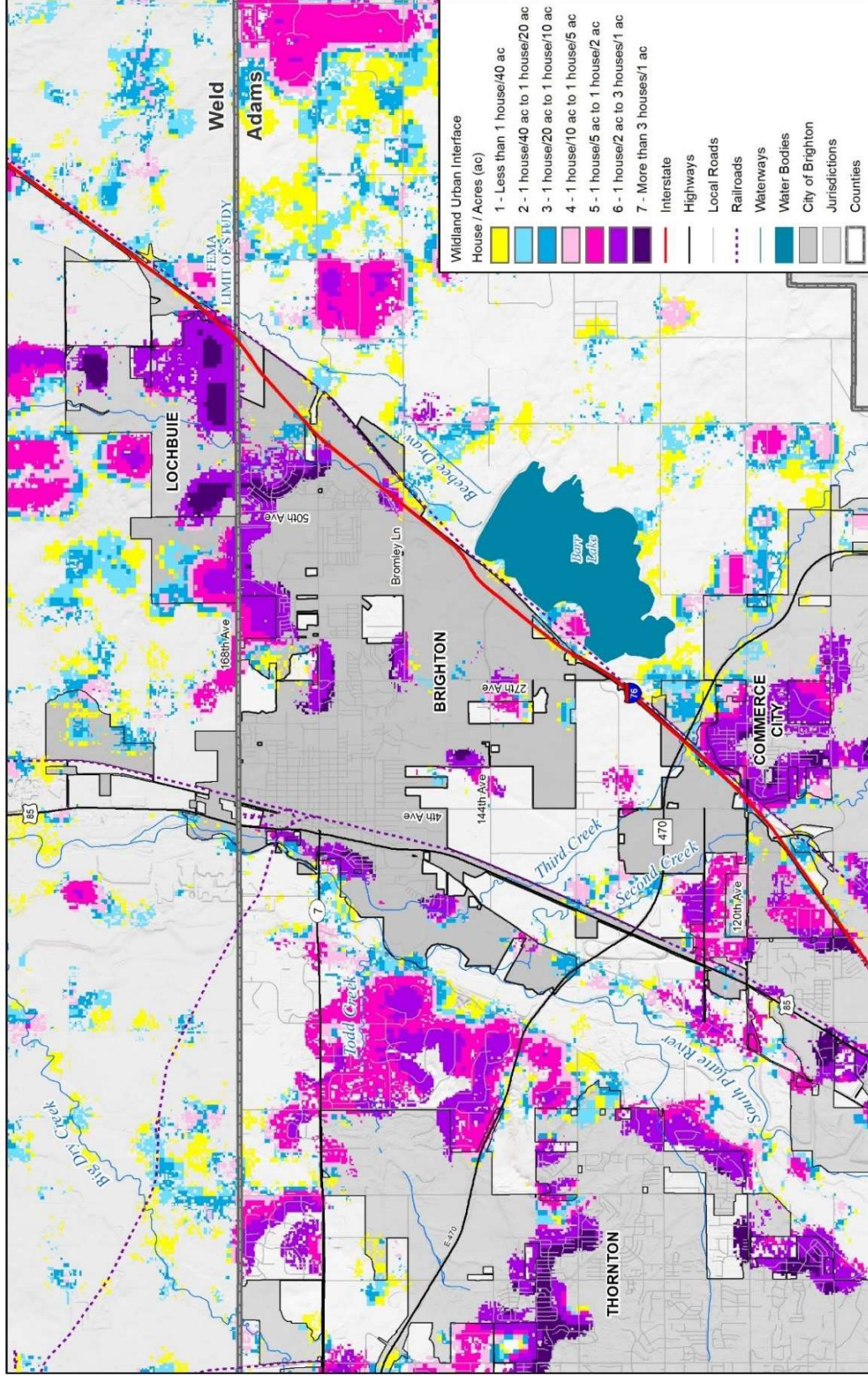
Wildfire	FEMA Lifeline	Critical Facility Type	Total
Moderate Density	Transportation	Bridge Non-Scour Fair Condition	1
	Water Systems	WWTP	2
TOTAL			3

Source: Adams County GIS/Assessor’s Office, WSP analysis.

Figure B- through Figure B- show the Wildland Urban Interface (WUI), Wildland Urban Interface Risk, and the Wildfire Risk to Assets. The WUI is mostly along the northern and northwestern boundaries of the City (shown in Figure B-). Most of the City has a relatively low risk to assets.



Figure B-7 Wildland Urban Interface (WUI) Areas in the City of Brighton



5 Miles

2.5

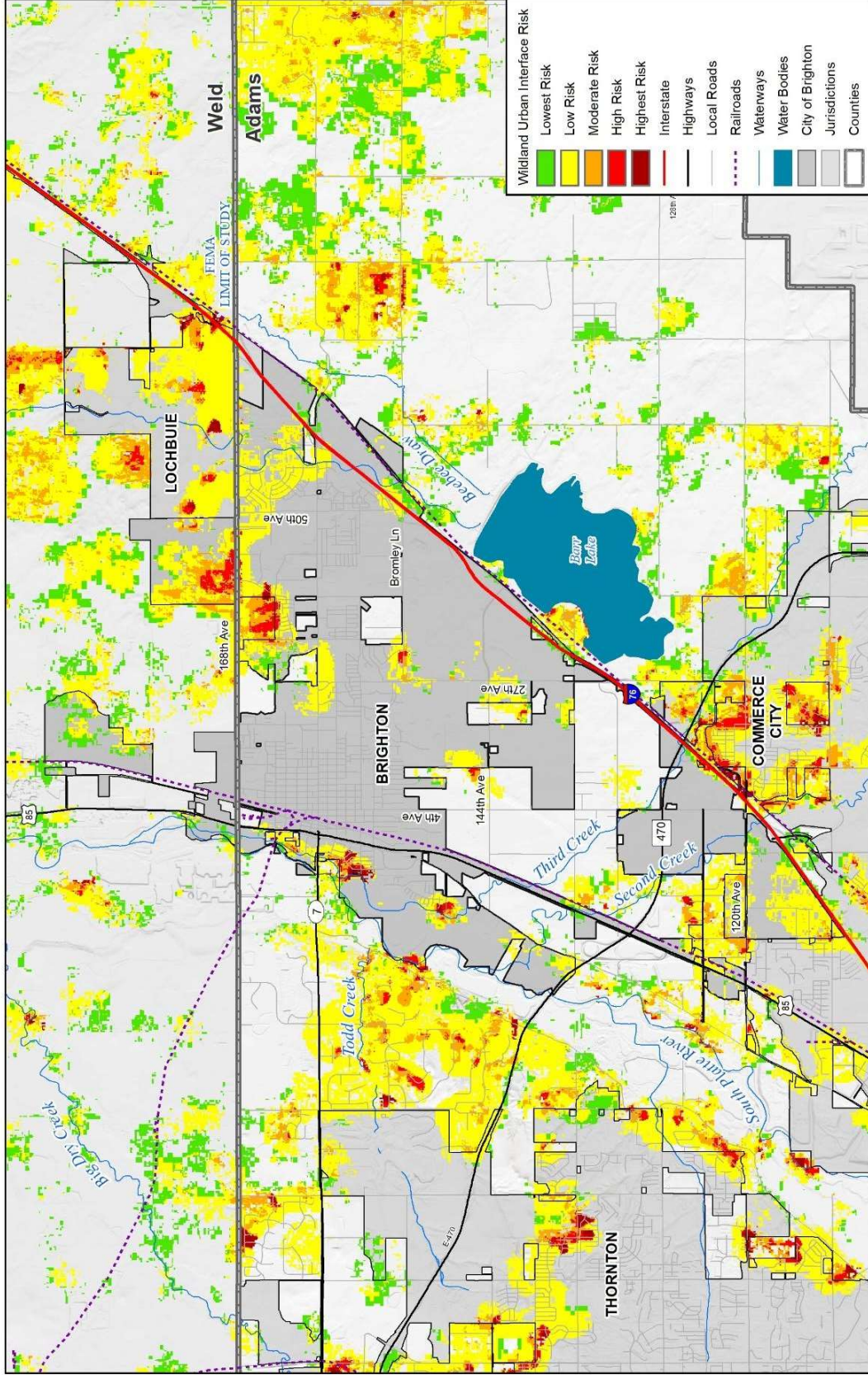
0

Map compiled 8/2024;
intended for planning purposes only.
Data Source: Adams County, CDOT,
CSFS Forest Atlas





Figure B-8 City of Brighton Wildfire Wildland Urban Interface Risk

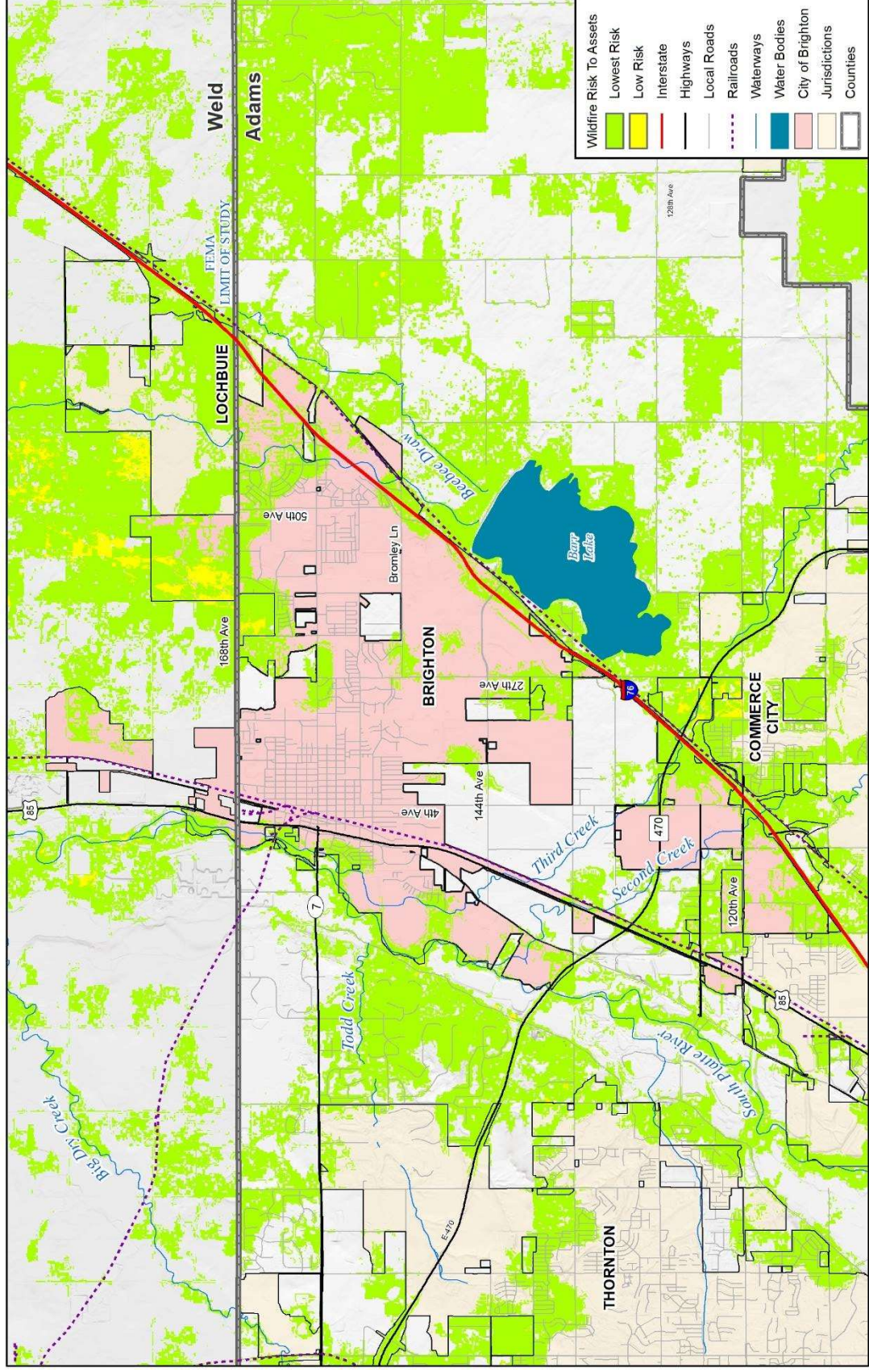


Map compiled 8/2024;
intended for planning purposes only.
Data Source: Adams County, CDOT,
CSFS Forest Atlas





Figure B-9 City of Brighton Wildfire Risk to Assets



Map compiled 8/2024;
intended for planning purposes only.
Data Source: Adams County, CDOT,
CSFS Forest Atlas



B.4.6 Growth and Development Trends

Brighton has experienced significant residential development with major projects including the Ridgeline Vista and Mountain View developments. These projects have added hundreds of new single-family homes, townhomes, and duplexes, built in phases from 2021 through 2026. According to the City of Brighton’s 2024 permit report, in 2024 the City of Brighton issued 97 new single-family detached residence permits. Brighton issued a total of 1,009 total building permits in 2024.

Retail expansion continues, with over 100,000 square feet of new retail space planned for 2024 and 2025 in the Prairie Center Metropolitan District to accommodate the ongoing population growth. The Prairie Center remains the City’s primary retail hub. In 2025 Brighton’s City council approved a \$255 million budget with major investments in community infrastructure including expanding the Brighton Recreation Center sports fields.

The City is also constructing a new water treatment plant, which is the City’s largest infrastructure project to date. The treatment plant will address both regulatory requirements as well as the needs of a rapidly growing population. The new treatment plant will double the City’s water treatment capacity from 10 million gallons per day to 20 million gallons per day. The plant was approved in 2021 and has an expected completion date in December of 2025. Until the plant is operational the city has been supplementing its water supply by purchasing water from neighboring cities, including Thornton, Westminster, and Denver.

With the continued expansion of commercial, residential and government developments, risk to and potential impacts from both natural and man-made hazards has increased across the board since 2020. Comprehensive emergency planning, development of redundancies, public education and identification of hazard mitigation activities are expansive and ongoing but system complexities and interdependencies both address and increase risk in a dynamic environment.

B.5 Capability Assessment

This section profiles the programs and policies currently in use by the City of Brighton to reduce hazard impacts or that could be used to implement hazard mitigation activities. The capabilities assessment is divided into five sections: planning and regulatory mitigation capabilities, administrative and technical mitigation capabilities, fiscal mitigation capabilities, past and ongoing mitigation outreach, and other mitigation efforts.

B.5.1 Planning and Regulatory Mitigation Capabilities

Table B lists planning and land management tools typically used by local jurisdictions to implement hazard mitigation activities and indicates those that are in place in Brighton.

Table B-17 City of Brighton Planning and Regulatory Mitigation Capabilities

Regulatory Tool (ordinance, code, plans)	Yes/No	Comments
Comprehensive Plan	Yes	Brighton 2020 Comprehensive Plan
Zoning ordinance	Yes	
Subdivision ordinance	Yes	
Growth management ordinance	Yes	
Floodplain ordinance	Yes	Prevents certain types of development from occurring in the floodplain and floodway. This ordinance also sets requirements for any change to the regulatory floodplain and floodway.
Building codes	Yes	2021 IBC
Fire department ISO rating	Yes	Class 2

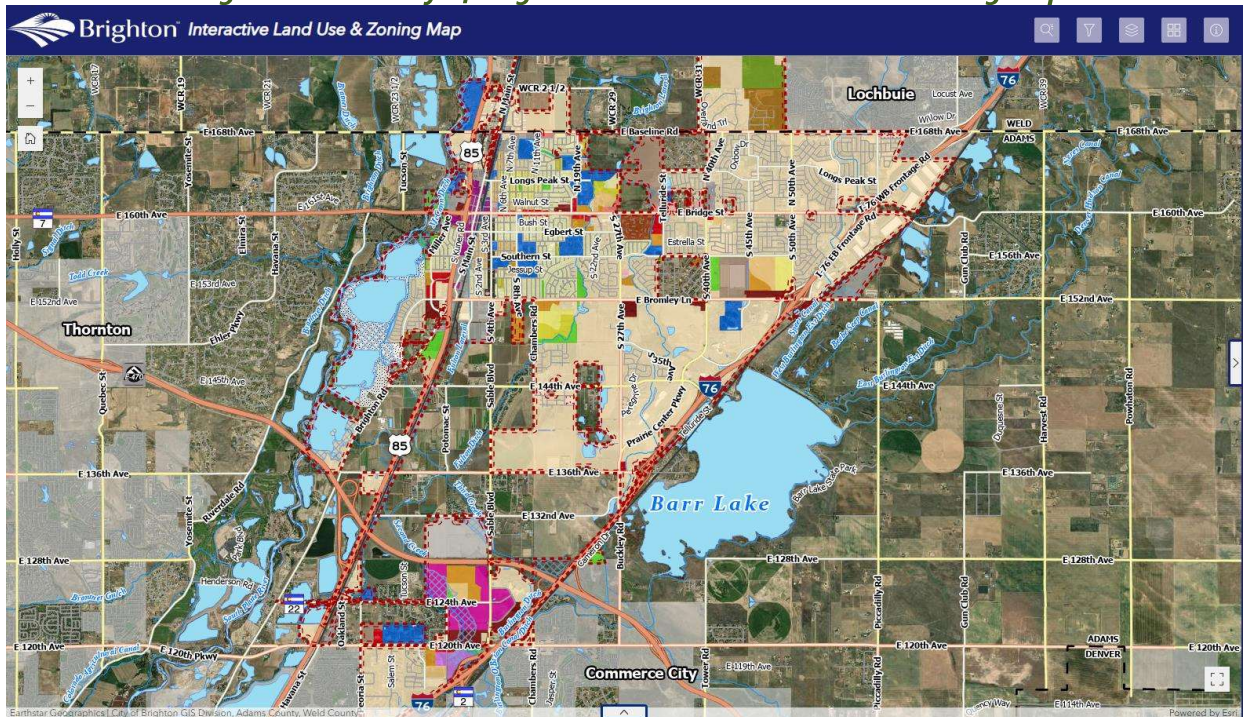
Regulatory Tool (ordinance, code, plans)	Yes/No	Comments
Erosion or sediment control program	No	This controls environmental pollution.
Hazard-Specific Ordinance or Plan (Floodplain, Steep Slope, Wildfire)	Yes	Recovery, Alert, and Warning, Shelter, Debris Management
Storm water management program	Yes	This program is in place to reduce flooding in developed areas.
Site plan review requirements	Yes	
Capital improvement plan	Yes	
Community Wildfire Protection Plan (CWPP)	Yes	
Economic development plan	Yes	
Local emergency operations plan	Yes	Updated on 3 year cycles and next update is in 2024
Other special plans	Yes	Recovery, Alert and Warning, Shelter, Debris Management, Sustainability
Flood insurance study or other engineering study for streams	Yes	This defines new floodplain areas and identifies capital improvement projects to reduce flood hazards.
Elevation certificates (for floodplain development)	Yes	This works to reduce flooding of any proposed development in the City.

Several key planning and regulatory tools used by Brighton are described below.

Building Codes, Land Use and Development Regulations

The City has adopted the 2021 International Building Code (IBC) and 2021 International Residential Code (IRC). Brighton's Land Use and Development Code is part of Article 17 of the Brighton Municipal Code and consists of 11 Articles plus Appendices and includes the City's zoning regulations.

Figure B-10 City of Brighton Interactive Land Use and Zoning Map



Source: <https://experience.arcgis.com/experience/e11cbce225e1487887f1cddbabe4ad93>

Brighton 2023 Bicycle, Pedestrian, and Multimodal Plan

This plan is currently creating a pedestrian and bicycle network in Brighton. The purpose of the plan is to make Brighton a more is to provide a framework to create a connected network of low-stress bicycle facilities.

Brighton 2021 Parks and Recreation Master Plan

The purpose of this Master Plan is to assist the City of Brighton in planning for and providing well-maintained and appropriate parks and recreation services and facilities to meet the growing needs of the community. The plan provides direction to the City and the Department of Parks and Recreation and replaces the following plans:

- 1999 Parks, Recreation, Open Space & Trails Master Plan
- 2001 Open Space Plan
- 2004 Greenways and Trails Master Plan
- 2008 Parks and Recreation Master Plan

The 2021 Plan has assessed and addresses the current and future development, management, and operational parks and recreation needs of the Brighton community, the City, and the Department.

Brighton 2020 Comprehensive Plan

The following are the overall goals that the City of Brighton established in their Comprehensive Plan: Brighton 2020: A Vision for Managing Change and Promoting Excellence. These goals are the foundation and guide to the public and private sector as decisions are made that “effect the future quality of life of existing and future residents and the natural and build environment in which they live, learn, work, and play.” The achievement of the following goals will depend largely on the City’s ability to successfully implement its hazard mitigation strategies and reduce risk to people and property from hazards.

- Preserve and enhance Brighton’s quality of life
- Preserve and enhance Brighton’s small town identity
- Promote and develop Brighton as a sustainable community
- Promote and protect Brighton’s “Free-Standing” community
- Maintain Brighton’s farming character
- Promote Brighton’s local history
- Promote community focal points
- Become an “inclusive” community
- Encourage interaction among residents

The majority of Brighton’s long-term planning goals and visions depend on fostering a safe, hazard resilient community.

Historic Splendid Valley District Plan

Historic Splendid Valley is an eclectic agricultural area established through a partnership with the City of Brighton and Adams County. The area is focused on preserving farmland and stimulating innovative opportunities that create closer connections between people, farming and nature. The District has been in a state of transition since E-470 opened in 2003, making the area more accessible and developable, threatening its farming heritage, the local food economy, and the buffer that farmland provides between Brighton and the Denver region.

The City of Brighton partnered with Adams County to draft the District Plan to study the feasibility of preserving farmland in southern Brighton that remains valuable for food production, while allowing for a range of development opportunities that consider the most efficient and sustainable use of the land. This

plan helps decision-makers guide investment in the area for compatible residential, commercial, and industrial development, as well as farmland conservation, and local food and agritourism promotion.

Second Creek Major Drainageway Plan and Flood Hazard Area Delineation

Mile High Flood District is currently in the process of creating a master plan for Second Creek. This plan identifies capital improvement projects along the stream corridor and will also delineate a new regulatory floodplain. The City of Brighton is a sponsor of this study.

Third Creek Major Drainageway Plan and Flood Hazard Area Delineation

Mile High Flood District is currently in the process of creating a master plan for Third Creek. This plan identifies capital improvement projects along the stream corridor and will also delineate a new regulatory floodplain. The City of Brighton is a sponsor of this study.

South Platte River

Mile High Flood District is currently in the process of creating a master plan for the South Platte River. This plan identifies capital improvement projects along the stream corridor and will also delineate a new regulatory floodplain.

2015 Brighton Stormwater Master Plan

This plan identifies capital improvement projects to prevent or reduce flooding throughout the City. Mile High Flood District was a sponsor of this study. In 2020 the Brighton Water Department completed an updated Risk and Resiliency Assessment and an Emergency Response Plan; both documents are both scheduled for updates in 2025.

Drought and Water Conservation Plans

The City has prepared water conservation and drought resiliency/management plans in the past, however, due to the rapid growth of the City, the current plans have become outdated. The City filed a Water Conservation Plan in 2007 under the Water Conservation Act of 2004. An update to this plan was completed in 2016. The City also completed a Drought Management Plan in 2012. The City is looking to update these plans in 2025-2026

B.5.2 Administrative and Technical Mitigation Capabilities

Table B identifies the personnel responsible for activities related to mitigation and loss prevention in Brighton.

Table B-18 City of Brighton Administrative and Technical Mitigation Capabilities

Personnel Resources	Yes/No	Department/Position
Planner/engineer with knowledge of land development/land management practices	Yes	Utilities/Director and Assistant Director of Utilities
Engineer/professional trained in construction practices related to buildings and/or infrastructure	Yes	Utilities/Assistant Director of Utilities
Public Works/Public Works Engineering Manager	Yes	Utilities Director & Assistant Director
Planner/engineer/scientist with an understanding of natural hazards	Yes	
Personnel skilled in GIS	Yes	Information Technology/Senior GIS Analyst

Personnel Resources	Yes/No	Department/Position
		Information Technology/GIS Technician Information Technology/GIS Administrator
Full time building official	Yes	Community Development/Chief Building Official
Floodplain Manager	Yes	Utilities Director
Emergency Manager	Yes	Emergency Manager

B.5.3 Fiscal Mitigation Capabilities

Table B identifies financial tools or resources that Brighton could potentially use to help fund mitigation activities.

Table B-19 City of Brighton Fiscal Mitigation Capabilities

Financial Resources	Accessible / Eligible to Use	Has Been Used in the Past	Comments
Community Development Block Grant	Yes	No	This is accessible only to the extent the City has applied and been awarded funds for this purpose
Capital Improvements Project funding	Yes	Yes	
Levy taxes for specific purposes with voter approval	No	No	
Fees for water, sewer, gas, or electric services	Yes	Yes	Only to the extent the mitigation is necessary for the operation of the water and sewer enterprise.
Impact fees for new development	Yes	Yes	Stormwater impact fees
Incur debt through general obligation bonds	No	No	Debt requires a vote of residents
Incur debt through special tax bonds	No	No	Debt requires a vote of residents
Incur debt through private activities	No	No	Debt requires a vote of residents
Withhold spending in hazard prone areas	Yes	No	

B.5.4 Past and Ongoing Mitigation Efforts

In 2015 the City was able to utilize a FEMA HMGP grant to install additional outdoor warning sirens to better warn the public of all hazard events, particularly tornado activity within the City.

The City of Brighton provides the local community with information on local hazards through a variety of platforms:

- Citizen Policy Academy
- Community Emergency Response Team (CERT) training
- Participating in community events (City BBQs, public events, etc.)
- Weather Spotter courses offered to city staff and residents
- Community Emergency Training (available by request)

Local Citizen Groups That Communicate Hazard Risks: the Brighton Community Emergency Response Team (CERT) provides an annual course that outlines the risks to our local community as well as individual, family and neighborhood action items to help mitigate risk. Additionally, team leadership responds to

community requests for information by senior groups, faith based organizations, and city departments and integrates local hazard information into each of these formats.

The City of Brighton joined the Firewise program in 2020. Firewise is a program managed by the National Fire Protection Association (NFPA) that teaches people how to adapt to living with wildfire and encourages neighbors to work together and take action to prevent loss. To be recognized as Firewise, communities in Colorado must take five steps, including forming a Firewise board or committee and obtaining a wildfire risk assessment.

The City has been a part of the National Flood Insurance Program and its Community Rating System since October 1st, 1991. The NFIP provides access to federally backed flood insurance, increased community resilience, and enhanced public safety. The Community Rating System provides flood insurance discounts, flood risk reduction, and reduces property damage.

The City does not currently participate in the StormReady program.

B.5.5 Opportunities for Enhancement

Based on the capability assessment, Brighton has several existing mechanisms in place that already help to mitigate hazards. There are also opportunities for the City to expand or improve on these policies and programs to further protect the community. Future improvements may include providing training for staff members related to hazards or hazard mitigation grant funding in partnership with the County and DHSEM. Additional training opportunities will help to inform City staff and City Council on how best to integrate hazard information and mitigation projects into the City policies and ongoing duties of the City. Continuing to train City staff on mitigation and the hazards that pose a risk to the City will lead to more informed staff members who can better communicate this information to the public.

The City could also join the StormReady program. StormReady is a community preparedness program that encourages government entities and commercial gathering sites to prepare for severe storms. It also helps communities improve their communication capabilities needed to respond to severe weather.

Additional opportunities for both internal and external emergency training and exercising for City and fire district staff are being pursued, as these initiatives are beneficial to the community's overall resilience and continued and enhanced participation among various departments adds value to mitigating hazards.

B.6 Mitigation Strategy

B.6.1 Mitigation Goals and Objectives

The City of Brighton has adopted the hazard mitigation goals and objectives developed by the HMPC.

B.6.2 Progress on Previous Actions

The City of Brighton had ten mitigation actions in the 2020 HMP, two of which have been completed, and one of which has since been deleted; refer to Table 5-1 in the Base Plan for information on completed and deleted actions. The seven remaining actions have been carried over into the 2026 Mitigation Action Plan, along with 26 new actions.

B.6.3 Continued Compliance with the National Flood Insurance Program

Recognizing the importance of the National Flood Insurance Program (NFIP) in mitigating flood losses, the City of Brighton will place an emphasis on continued compliance with the NFIP. As an NFIP

participant, the City has and will continue to make every effort to remain in good standing with NFIP. This includes continuing to comply with the NFIP's standards for updating and adopting floodplain maps and maintaining and updating the floodplain zoning ordinance as well as review of any potential development in special flood hazard areas.

B.6.4 Mitigation Actions

The local planning team identified and prioritized the following mitigation actions for the City of Brighton based on the risk assessment. Information on how each action will be implemented and administered, such as ideas for implementation, responsible agency, potential funding, estimated cost, and timeline also are included. The lead agency (bolded) and any supporting partners are also listed.

Table B-20 City of Brighton 2026 Mitigation Action Plan

ID	Description	Hazard(s) Mitigated	Related Goals	Lead Agency and Partners	Cost Estimate	Potential Funding	Priority	Timeline	Status & Implementation Notes
COB 1	<p>Integrate Mitigation & Preparedness Planning into Existing Public Education Programs: Integrate in programs around the City to enhance resiliency of the community around all hazard vulnerabilities. Residents must be aware of local hazards and the mitigation & preparedness actions they can take to assist in protecting themselves and their families from the adverse effects, and to enhance community resiliency. Continued and additional community education and training to specifically address local hazards, containing detailed recommendations around potential community action items, which are crucial to continue to reinforce the need to take personal and individual action to mitigate risk related to local hazards. Add information about local hazards and mitigation strategies into existing citizen centered trainings and/or developed hazard and response specific training for citizens as needed to provide information to residents about mitigation/preparedness options in their community.</p>	Drought, Earthquake, Flood, Hazmat, Soil Hazards, Thunderstorm, Tornado, Wildfire, Winter Weather	1, 2, 4	Brighton OEM, Brighton Fire Rescue District	\$5,000	HSGP, EMPG, City General Fund	Medium	Annual	In Progress. We have worked on delivering this public education in a variety of modalities including presentations for seniors, public and community events and through partnerships with NWS and other regional organizations. While we have currently discontinued the annual offering of our CERT program, we are continually looking for ways to include mitigation activities into our public education programs.
COB 2	<p>Emergency Services Support Generator: Currently, the City maintains only a small generator at the Brighton Police Department, capable only of supporting minimal emergency lighting, the security of detention cells, and limited communication systems. The current generator cannot support the emergency coordination functions which take place at this location. Install a generator and associated wiring to support emergency functions during a short- or long-term power outage. The wiring and installation of a 500KVA generator and a 1200amp transfer switch would allow for a reliable back up power source at a critical city facility. This generator would support key city staff and services at this location and would allow for the relocation of staff and continuity of critical services. In addition, emergency support related services and functions are coordinated from this location. Critical emergency support functions such as operation of the Emergency Operations Center (EOC), location of the Policy Group meeting area and information center, the Joint Information Center (JIC) and local law enforcement operations are designated to take place at this location.</p>	Cyber, Dam Failure, Earthquake, Flood, Hazmat, Terrorism, Thunderstorm, Tornado, Soil Hazards, Wildfire, Winter Weather,	2	Brighton OEM	\$200,000	FEMA HMA Grants, City CIP Budget	High	2025-2027	Not Started. This continues to be a high priority for the City of Brighton to address an ongoing gap. Currently emergency power addresses only the most basic functions within the City and a more robust generator would allow for continued functionality of additional critical services. Initial steps such as the submittal of an NOI and BCA training were initiated in Finance and not continued. Interest remains high in revisiting this and exploring additional funding opportunities.

ID	Description	Hazard(s) Mitigated	Related Goals	Lead Agency and Partners	Cost Estimate	Potential Funding	Priority	Timeline	Status & Implementation Notes
COB 3	Public/Emergency Shelter Generator for Eagle View Adult Center: Eagle View Adult Center is the main shelter location for the City. It does not have a generator nor is the building wired to accept a generator. Project would be purchasing a generator and wiring the building to setup the generator. Benefits: Ability to safely shelter residents during power loss.	Thunderstorms, Tornado, Winter Weather	2	Brighton OEM, Parks and Rec	\$250,000 - \$300,000	FEMA HMA grants, City General Fund	High	2026-2031	Not Started. This continues to be a high priority for the City of Brighton to address an ongoing gap. Currently emergency power addresses only the most basic functions within the City and a more robust generator would allow for continued functionality of additional critical services. Emergency generator power to support emergency sheltering remains a critical capability not currently achieved.
COB 4	Master Drainage Plan: Comprehensive master planning efforts are needed to provide guidance to the City. The City needs to hire an engineering consulting firm to complete a comprehensive master drainage plan.	Flood	2	Brighton Utilities, MHFD	\$150,000	Stormwater impact fees	High	Ongoing	Annual. This is an on-going effort at the City of Brighton as priorities and available funding shift.
COB 5	Third Creek and Brighton Road: The Third Creek Crossing under Brighton Road has become silted and is not adequately sized to pass 100-year flows. Complete engineering civil drawings and construct a 100-year crossing under Brighton Road.	Flood	2	Brighton Public Works	\$8,000,000	Stormwater impact fees, monthly fees, MHFD	Low	Unknown	Not Started. Due to the costly nature of this project, work has not started. This project has been identified and conceptually designed in the Third Creek Master Drainage Plan completed by Mile High Flood District in 2023.
COB 6	South Brighton Outfall: The far southern portion of the City needs drainage improvements to convey storm flows to the South Platte River. Design and construct an outfall system to convey flows to South Platte River. Complete engineering civil drawings and construct the outfall system.	Flood	2	Brighton Public Works	\$20,000,000	Stormwater impact fees, monthly fees, MHFD	Medium	2028-2030	Not Started. A conceptual plan had been prepared, but lack of funding for such a large project has prohibited progress.
COB 7	Recreation Center Tributary Outfall: Design and construct an outfall to serve the properties surrounding the intersection of Bridge and Telluride Street to prevent localized flooding of public roadways.	Flood	2	Brighton Utilities, MHFD	\$4,500,000	Stormwater impact fees, monthly fees, MHFD.	High	2026-2027	In Progress. Significant progress has been made on this project. Two of the three phases of the project have been constructed as of the end of 2024. The final

ID	Description	Hazard(s) Mitigated	Related Goals	Lead Agency and Partners	Cost Estimate	Potential Funding	Priority	Timeline	Status & Implementation Notes
COB 8	Emergency Generator for Public Works Facility/ Back up EOC location. This facility, scheduled to be completed in early 2025 would benefit from the wiring and purchase of emergency generator power as the City's PW Department Operations Center (DOC) and potential location for the City's Emergency Operations Center (EOC)	Winter Weather, Thunderstorm, Tornado, Flood, Dam failure, Hazmat, Terrorism, Cyber	2,3,4	City of Brighton OEM, Public Works	\$250,000 - \$300,000	FEMA HMA grants and General Fund	High	2026-2031	phase is planned for design and construction in 2026. New in 2026. This continues to be a high priority for the City of Brighton to address an ongoing gap. Currently emergency power addresses only the most basic of functions within the City and a more robust generator would allow for continued functionality of additional critical services.
COB 9	Weather Station Permanent Installation at PW Facility	Flood, Thunderstorm, Tornado, Winter Weather	3,4	Brighton Public Works	\$50,000	FEMA HMA grants, City General Fund	Medium	2026-2031	New in 2026. The purchase and installation of this product at the new facility would support both PW and OEM in determining real time conditions and support decisions making before and during a weather event.
COB 10	Permanent Public Messaging Board	Cyber, Dam Failure, Flood, Hazmat, Terrorism, Thunderstorm, Tornado, Winter Weather	1,2,4	Brighton Public Works	\$200,000	FEMA HMA grants, City General Fund	Medium	2025-2035	New in 2026. The purchase and installation of a permanent messaging board to replace disposable banners on Main Street will help us to share real time emergency information with drivers and pedestrians and provide timely updates throughout the duration of the event.
COB 11	Sable Road Outfall. Installation of new stormwater outfall channel to serve existing and future development.	Flood	2	Brighton Utilities, MHFD	\$9,000,000	Stormwater impact fees, monthly fees, MHFD.	High	2026-2027	New in 2026. Design for the outfall is on-going as part of the larger Sable Boulevard Improvements.

ID	Description	Hazard(s) Mitigated	Related Goals	Lead Agency and Partners	Cost Estimate	Potential Funding	Priority	Timeline	Status & Implementation Notes
COB 12	Second Creek and Third Creek Outfall to South Platte River. Design and construction of an outfall for Second and Third Creek to the South Platte River.	Flood	2	Brighton Utilities, MHFD	\$25,000,000	Stormwater impact fees, monthly fees, MHFD.	High	2034-2036	New in 2026. Conceptual design as a part of the Second and Third Creek (Lower) MDP.
COB 13	Second Creek at Brighton Road Bridge. Design and construction of new bridge to replace undersized crossing.	Flood	2	Brighton Utilities, MHFD	\$10,000,000	Stormwater impact fees, monthly fees, MHFD.	Medium	Unknown	New in 2026. Conceptual design as a part of the Second and Third Creek (Lower) MDP.
COB 14	Second Creek at Union Pacific Bridge. Design and construction of new bridge to replace undersized crossing.	Flood	2	Brighton Utilities, MHFD	\$15,000,000	Stormwater impact fees, monthly fees, MHFD.	Medium	Unknown	New in 2026. Conceptual design as a part of the Second and Third Creek (Lower) MDP.
COB 15	Second Creek at Highway 85 Bridge. Design and construction of new bridge(s) to replace undersized crossings.	Flood	2	Brighton Utilities, MHFD	\$30,000,000	Stormwater impact fees, monthly fees, MHFD.	Medium	Unknown	New in 2026. Conceptual design as a part of the Second and Third Creek (Lower) MDP.
COB 16	Channel Improvements Second Creek (Reach 1). Design and construction of channel improvements for low-functioning stream.	Flood	2	Brighton Utilities, MHFD	\$5,000,000	Stormwater impact fees, monthly fees, MHFD.	Medium	2032-2033	New in 2026. Conceptual design as a part of the Second and Third Creek (Lower) MDP.
COB 17	Channel Improvements for Third Creek (Reach 1). Design and construction of channel improvements for low-functioning stream.	Flood	2	Brighton Utilities, MHFD	\$5,000,000	Stormwater impact fees, monthly fees, MHFD.	Medium	2033-2034	New in 2026. Conceptual design as a part of the Second and Third Creek (Lower) MDP.
COB 18	Second Creek at Fulton flume. Design and construction of new crossing of Second Creek over the Fulton Ditch.	Flood	2	Brighton Utilities, MHFD	\$3,000,000	Stormwater impact fees, monthly fees, MHFD.	Medium	2031-2032	New in 2026. Conceptual design as a part of the Second and Third Creek (Lower) MDP.
COB 19	Second Creek at 136th bridge. Design and construction of new bridge to replace undersized crossing.	Flood	2	Brighton Utilities, MHFD	\$10,000,000	Stormwater impact fees, monthly fees, MHFD.	Medium	Unknown	New in 2026. Conceptual design as a part of the Second and Third Creek (Lower) MDP.
COB 20	Second Creek at 132nd Ave bridge	Flood	2	Brighton Utilities, MHFD	\$10,000,000	Stormwater impact fees, monthly fees, MHFD.	Medium	Unknown	New in 2026. Conceptual design as a part of the Second and Third Creek (Lower) MDP.
COB 21	Channel Improvements Second Creek (Upstream of Reach 1). Design and construction of channel improvements to low-functioning stream.	Flood	2	Brighton Utilities, MHFD	\$5,000,000	Stormwater impact fees, monthly fees, MHFD.	Medium	2032-2033	New in 2026. Conceptual design as a part of the Second and Third Creek (Lower) MDP.

ID	Description	Hazard(s) Mitigated	Related Goals	Lead Agency and Partners	Cost Estimate	Potential Funding	Priority	Timeline	Status & Implementation Notes
COB 22	Channel Improvements Third Creek (Upstream of Reach 1). Design and construction of channel improvements to low-functioning stream.	Flood	2	Brighton Utilities, MHFD	\$5,000,000	Stormwater impact fees, monthly fees, MHFD.	Medium	Unknown	New in 2026. Conceptual design as a part of the Third Creek MDP.
COB 23	Second Creek at 124th Ave bridge. Design and construction of new bridge to replace undersized crossing.	Flood	2	Brighton Utilities, MHFD	\$10,000,000	Stormwater impact fees, monthly fees, MHFD.	Medium	Unknown	New in 2026. Conceptual design as a part of the Second and Third Creek (Lower) MDP.
COB 24	Second Creek at Potomac bridge. Design and construction of new bridge to replace undersized crossing.	Flood	2	Brighton Utilities, MHFD	\$10,000,000	Stormwater impact fees, monthly fees, MHFD.	Medium	Unknown	New in 2026. Conceptual design as a part of the Second and Third Creek (Lower) MDP.
COB 25	Second Creek at 120th Ave relief culvert. Design and construction of additional culvert at crossing to achieve 100-year conveyance.	Flood	2	Brighton Utilities, MHFD	\$3,000,000	Stormwater impact fees, monthly fees, MHFD.	Medium	Unknown	New in 2026. Conceptual design as a part of the Second and Third Creek (Lower) MDP.
COB 26	Third Creek at Fulton/Burlington bridge	Flood	2	Brighton Utilities, MHFD	\$10,000,000	Stormwater impact fees, monthly fees, MHFD.	Medium	Unknown	New in 2026. Conceptual design as a part of the Third Creek MDP.
COB 27	Third Creek at Sable bridge. Design and construction of new bridge to replace undersized crossing.	Flood	2	Brighton Utilities, MHFD	\$10,000,000	Stormwater impact fees, monthly fees, MHFD.	Medium	Unknown	New in 2026. Conceptual design as a part of the Third Creek MDP.
COB 28	Third Creek at 132nd bridge. Design and construction of new bridge to replace undersized crossing.	Flood	2	Brighton Utilities, MHFD	\$10,000,000	Stormwater impact fees, monthly fees, MHFD.	Low	Unknown	New in 2026. Conceptual design as a part of the Third Creek MDP.
COB 29	Third Creek at 136th bridge	Flood	2	Brighton Utilities, MHFD	\$10,000,000	Stormwater impact fees, monthly fees, MHFD.	Medium	Unknown	New in 2026. Conceptual design as a part of the Third Creek MDP.
COB 30	New deep wells. Design and construction of new deep aquifer wells and pipeline for use as an alternate water source during drought.	Drought	2	Brighton Utilities	\$30,000,000	CIP, Water Impact Fees, FIL	High	2025-Unknown	New in 2026. This project received a grant from the CDPHE for a feasibility analysis.
COB 31	Redundant pumps. Design and construction/installation of redundant pumping systems.	Drought	2, 3	Brighton Utilities	\$5,000,000	CIP, Water Impact Fees, FIL, operating funds	High	2034	New in 2026. Conceptual Design Complete.



ID	Description	Hazard(s) Mitigated	Related Goals	Lead Agency and Partners	Cost Estimate	Potential Funding	Priority	Timeline	Status & Implementation Notes
COB 32	New alluvial wells. Design and construction of new alluvial wells and raw water pipelines.	Drought	2, 3	Brighton Utilities	\$20,000,000	CIP, Water Impact Fees	High	2025-2029	New in 2026. Initial design work starting in 2025.
COB 33	On-call contract for erosion control. Solicit on-call services for erosion/sediment control	Wildfire	2, 3, 4	Brighton Utilities	\$2,500	General Fund	High	2026	New in 2026. Not Started.



B.7 Implementation and Maintenance

This section provides an overview of the City's strategy for plan implementation and maintenance, and outlines the method and schedule for monitoring, evaluating, and updating the plan. The section also discusses incorporating the plan into existing planning mechanisms and how to ensure continued public involvement in mitigation planning.

B.7.1 Incorporation into Existing Planning Mechanisms

The information contained within this plan, including results from the Vulnerability Assessment, and the Mitigation Strategy will be used by the City to help inform updates and the development of local plans, programs and policies, as described in Section 6.4 of the Base Plan. The following mitigation actions listed in Table B-20 specifically address development of local plans that will be informed by the information in this HMP:

- COB-1: Integrate mitigation & preparedness planning into existing public education programs
- COB-6: Master Drainage Plan

The City of Brighton incorporated information from the 2020 Adams County Hazard Mitigation Plan into other planning mechanisms as follows:

- The City of Brighton has evaluated mass public notification needs and expenses and has opted to retire the outdoor warning system due to increasing costs, ineffective information exchange and instead has opted to pursue mobile alert systems due to their increased effectiveness.
- Public education strategies continue to incorporate hazard mitigation into classes and events, instructing the public both on what individuals and families can do to mitigate personal risk and in what activities and projects the city has undertaken to address all hazard risk.

B.7.2 Monitoring, Evaluation and Updating the Plan

The City Emergency Manager will be responsible for monitoring, evaluating, and updating this plan using the process outlined in Section 6 of the Base Plan. The City will continue to involve the public in mitigation, as described in Section 6.4 of the Base Plan. The City Emergency Manager will be responsible for representing the City on the Adams County HMPC, and for coordination with City staff and departments during plan updates. The City will review this annex regularly and will update it every five years in accordance with the Disaster Mitigation Act Requirements.

B.7.3 Continued Public Involvement

The City of Brighton will follow the strategy for ongoing public education and outreach outlined in Section 6.5 of the Base Plan. Specifically, the City will:

- Continue to develop and update the local Public Alert and Warning Plan to ensure a multi-faceted approach to alerting the public of potential hazards and appropriate responses.
- Maintain and update resources and strategies for access and functional needs populations before, during, and after an emergency.
- Provide information and education to the public in the form of specific classes, through public events and outreach and in coordination with community engagement staff sharing emergency and preparedness information with the public.